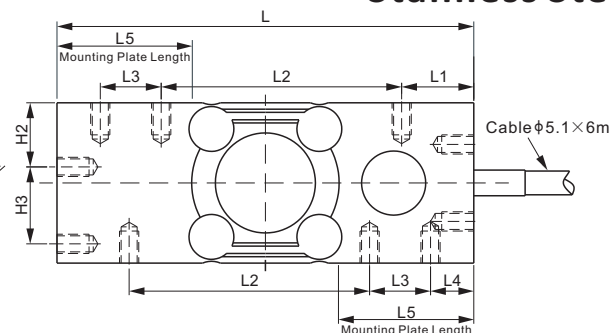
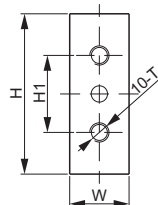
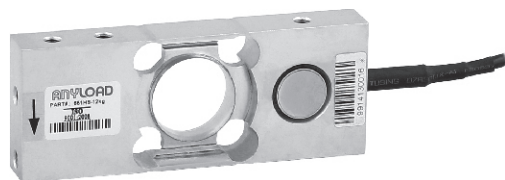


651HS

Stainless Steel



DIMENSIONS

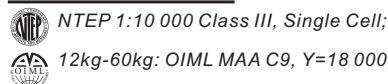
RATED CAPACITY	H	H1	H2	H3	L	L1	L2	L3	L4	L5	W	T
kg/mm												
6-30	50.0	24.0	20.0	24.0	130.0	22.5	75.0	19.0	13.5	39.0	18.5	M6 Depth10
50; 60	50.0	24.0	20.0	24.0	130.0	22.5	75.0	19.0	13.5	39.0	23.5	M6 Depth10
lb/inches (conversion of above dimensions)												
13.23-66.14	1.97	0.95	0.79	0.95	5.12	0.89	2.96	0.75	0.53	1.54	0.73	M6 Depth0.39
110.23; 132.28	1.97	0.95	0.79	0.95	5.12	0.89	2.96	0.75	0.53	1.54	0.93	M6 Depth0.39

SPECIFICATIONS

Full Scale Output	2.0 mV/V ± 1%	Recommended Excitation	10V (15V Maximum)
Zero Balance	± 0.02 mV/V	Reference Max. Platform Size	350×350 mm
Non-linearity	< ± 0.030%	Insulation Resistance	>2 [50V DC] GΩ
Repeatability	< ± 0.020%	Nominal Temperature Range	-10°C to 50°C / 14°F to 122°F
Hysteresis Error	< ± 0.030%	Safe Overload	150% of full scale
Creep in 30 min.	< ± 0.030%	Breaking Overload	300% of full scale
Input Resistance	385Ω ± 15	Seal Type / IP Rating	Welded Seal / IP68/IP69K
Output Resistance	350Ω ± 3	Cable Color Code	Exc+ Red Exc- Black Sig+ Green Sig- White Shield Bare
Element Material	17-4PH Stainless Steel		

PART NUMBER

Rated Capacity	Part No.	Shipping Weight (kg) Approx.
6kg.....	651HS-6kg.....	0.9
12kg.....	651HS-12kg.....	0.9
20kg.....	651HS-20kg.....	0.9
30kg.....	651HS-30kg.....	0.9
50kg.....	651HS-50kg.....	1.1
60kg.....	651HS-60kg.....	1.1



INTERCHANGEABLE PRODUCTS

Manufacturer	Model
Vishay Revere Transducers.....	HPSM

SINGLE POINTS