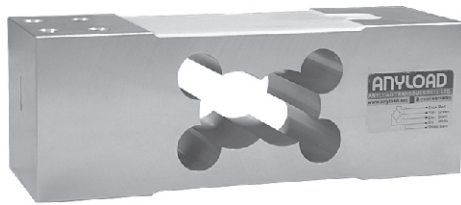
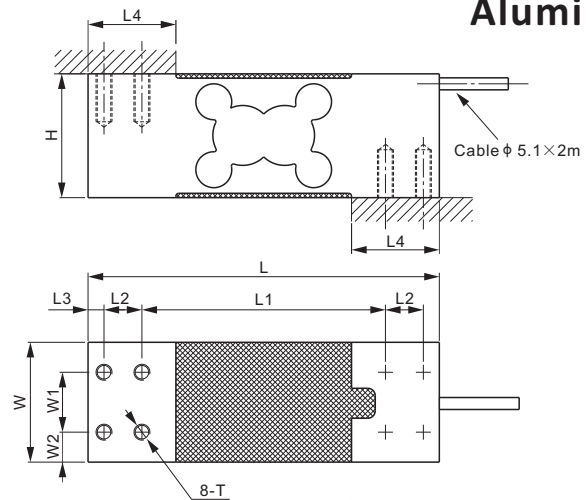


108CA



Aluminum



  **CE RoHS**

DIMENSIONS

RATED CAPACITY	H	L	L1	L2	L3	L4	W	W1	W2	T
kg/mm										
10-1,000	62.0	176.0	122.0	19.0	8.0	44.0	60.0	30.0	15.0	M8 Depth20
lb/inches (conversion of above dimensions)										
22-2,204.6	2.44	6.93	4.80	0.75	0.31	1.73	2.36	1.18	0.59	M8 Depth0.79

SPECIFICATIONS

Full Scale Output	2.0 mV/V ± 10%	Recommended Excitation	10V (15V Maximum)
Zero Balance	± 0.02 mV/V	Reference Max. Platform Size	600 × 700 mm
Non-linearity	< ± 0.017%	Insulation Resistance	> 2 [50V DC] GΩ
Repeatability	< ± 0.017%	Nominal Temperature Range	-10°C to 40°C / 14°F to 104°F
Hysteresis Error	< ± 0.017%	Safe Overload	150% of full scale
Creep in 30 min.	< ± 0.023%	Breaking Overload	300% of full scale
Input Resistance	415Ω ± 15	Seal Type / IP Rating	Environmentally Sealed / IP66
Output Resistance	350Ω ± 3	Cable Color Code	Exc+ Red Exc- Black Sig+ Green Sig- White Shield Bare
Element Material	Aluminum		

PART NUMBER

Rated Capacity	Part No.	Shipping Weight (kg) Approx.
10kg	108CA-10kg	1.5
20kg	108CA-20kg	1.5
30kg	108CA-30kg	1.5
60kg	108CA-60kg	1.5
100kg	108CA-100kg	1.5
150kg	108CA-150kg	1.5
200kg	108CA-200kg	1.5
250kg	108CA-250kg	1.5
300kg	108CA-300kg	1.5
500kg	108CA-500kg	1.6
600kg	108CA-600kg	1.6
750kg	108CA-750kg	1.6
1t	108CA-1t	1.6

INTERCHANGEABLE PRODUCTS

Manufacturer	Model
Coti Global	CG-50-2
HBM	PW24A
Vishay TedeA-Huntleigh	1263

AVAILABLE OPTIONS

■ Stainless steel version 651KSCS (page 85)



10kg-500kg: NTEP 1:5 000 Class III, Single Cell
600kg-1t: NTEP 1:4 000 Class III, Single Cell



10kg-30kg: OIML MAA C4, Y=15 000;
60kg-500kg: OIML MAA C5, Y=12 300;
600kg-1t: OIML MAA C4, Y=4 000

SINGLE POINTS