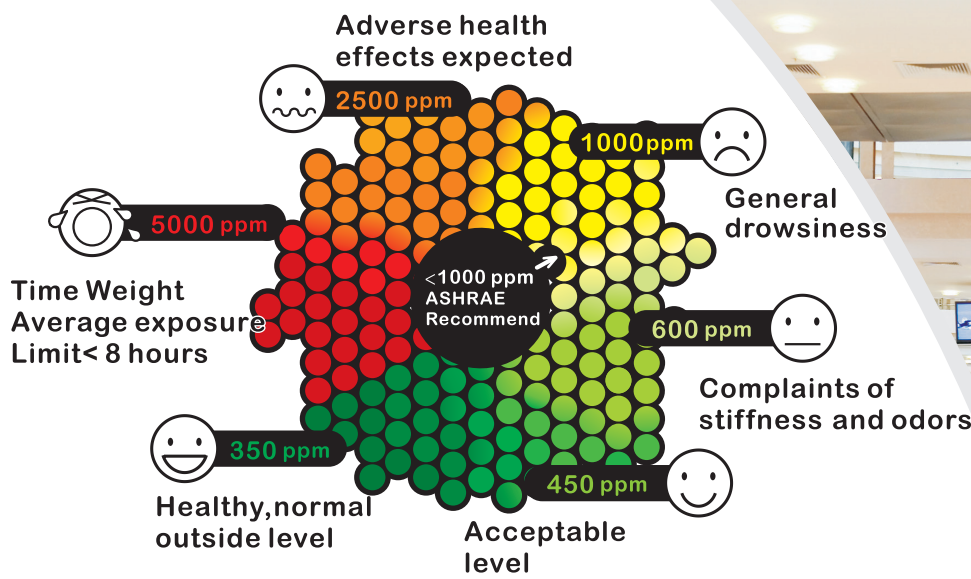
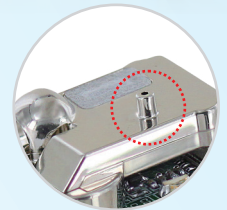


High-Reliability CO₂ Module For Various Applications IAQ, Greenhouse, HVAC

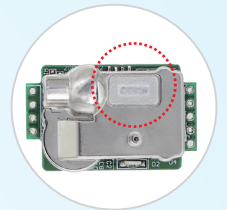
- ▶ Use Dual Beam NDIR technology to improve the long term stability
- ▶ Cost - effective CO₂ monitors made with IR-SOC technology
- ▶ Small Module for OEM



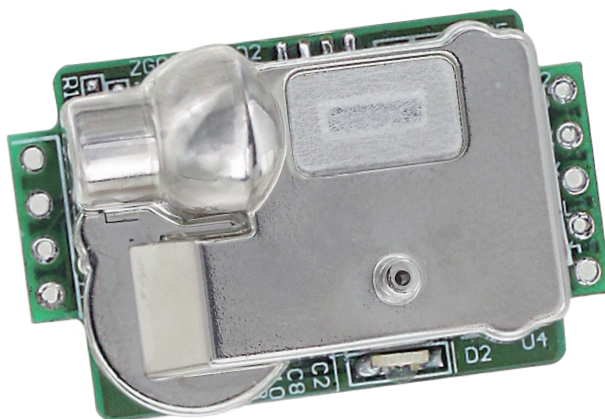
▶ Calibration Tube



▶ CO₂ Entry Hole



▶ Small Module

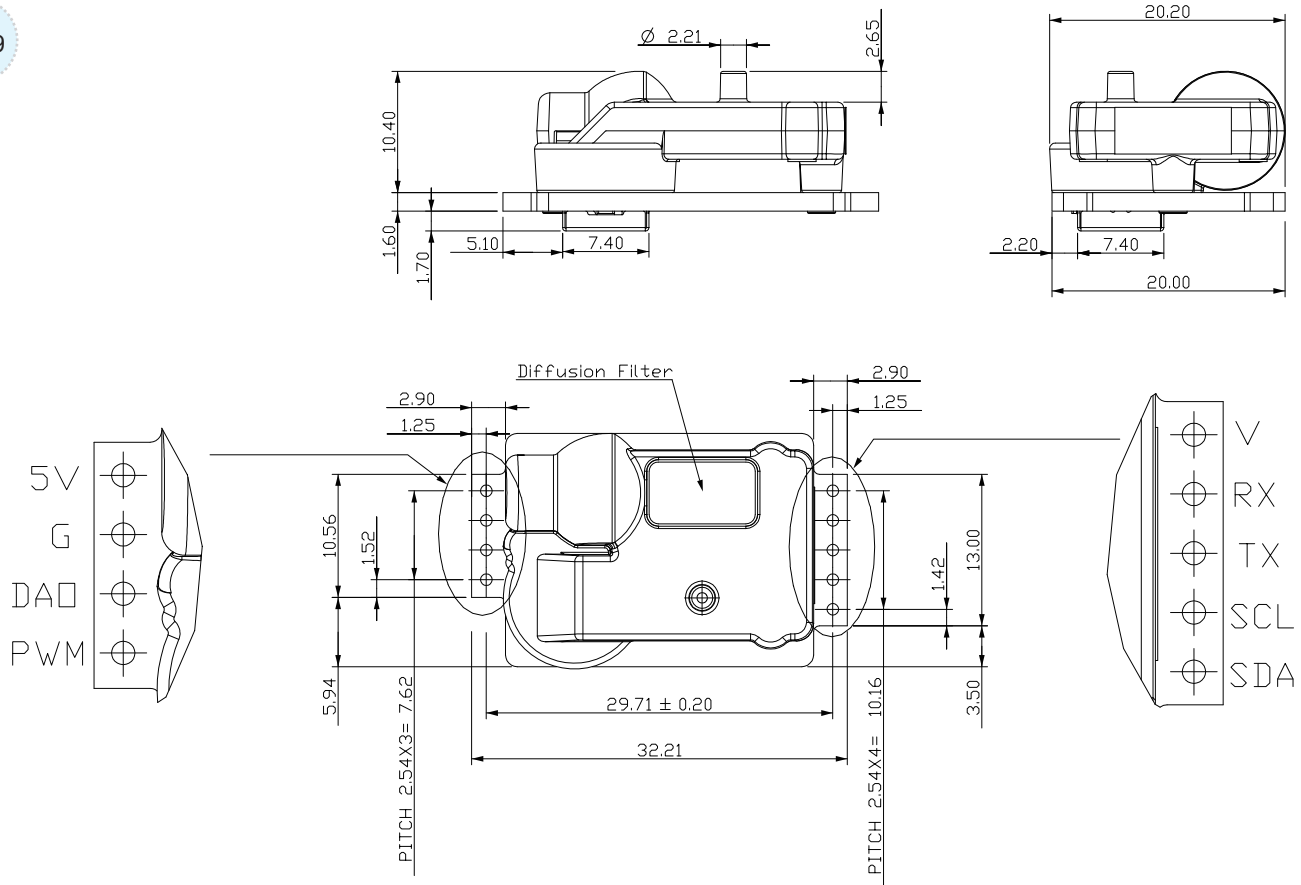


ZG09

Application

- ▶ IAQ (Indoor air quality)
- ▶ Greenhouse
- ▶ HVAC, DCV (Demand Control Ventilation)

ZG09



Dimensions: 32.2mm x 20.2mm x 13.7mm

Specifications (Specifications are subject to change without notice)

Method - Dual Beam NDIR

Sample Method - Diffusion or flow through (50~200ml/min)

Operating Conditions : 0~50°C (32~122°F), 0~95% RH, non-condensing

Storage Conditions : -20°C~60°C (-4°F~140°F), 0~95%RH, non-condensing

■ Performance - CO2 Channel

Measurement Range 0~10,000ppm/1.0%

Accuracy ±50ppm ±3% of reading

Repeatability ±20ppm

Pressure Dependence 0.13% of reading per mm Hg

Response Time About 1 min

Resolution 1ppm

Warm-Up Time 30 seconds @25°C



■ Power Supply and Output

Power supply 5.0 VDC ±0.5 supply, Ripple and Noise (mVp-p) 200

Power Consumption Max. (0.8 ms shot capture) <190mA, Avg. <34mA

Output Interface 9pin Connector, Space=2.54mm

Digital Output UART, I2C, PWM, DAC