

DATASHEET

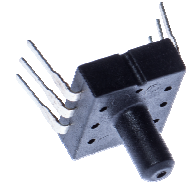
SPD100AA Pressure Sensor

oktober 5, 2016

reference
spd100aa n

page
1/1

This Smartec pressure sensor has an amplified analogue output. The sensor is compensated for offset, sensitivity, temperature drift and nonlinearity. The sensor has a range of 100 psi absolute. Other ranges can be delivered on request. The output is ratiometric to the power supply voltage. At 5 Vcc the output span is 0.5 to 4.5 V.



Electrical Characteristics

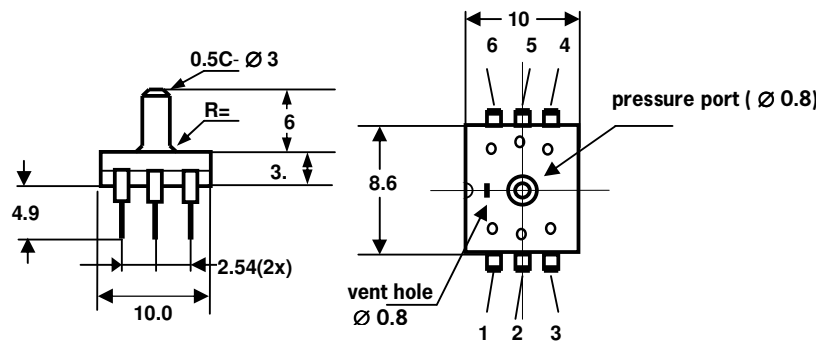
Performance Characteristic at Vcc =5V excitation @ 25 °C

Parameter	Min	Typ	Max	Units
Supply Voltage	4.75	5	5.25	V
Supply Current			3	mA
Pressure range (fs)	0		100	psi
Zero Output *)	0.428	0.5	0.572	Vdc
Span Output *)		4.00		Vdc
Max output current			2.2	mA
Accuracy **)			±1.8	%FS
Response time		1	2	ms
Pressure overload			3x	Rated pressure
Operating temperature	-20		85	°C
Storage temperature	-40		125	°C

Wetted materials are: Pyrex Glass, Epoxy and silicon

*) Output is ratiometric to supply voltage

**) all errors included, temperature compensation over 50 °C



Pin Description

Pin	Description
1	NC
2	NC
3	Gnd
4	Vcc
5	Out
6	NC

Do NOT connect NC pins
Apply 100nF between Vcc and Gnd.