

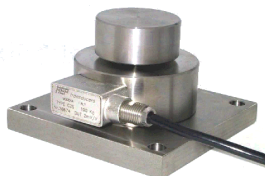
Data Sheet: C2S.100.R7

C2S

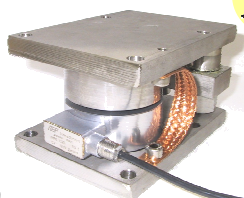
Load cell

Accessori Accessories

A

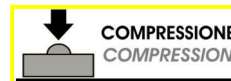
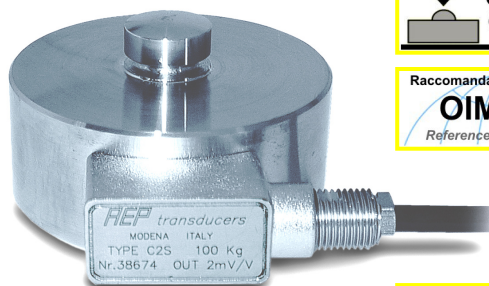


① Testa di carico / Loading head

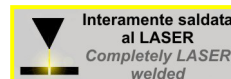
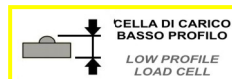


② Piastra base / Mounting plate

③ Unità di pesatura / Weighing unit



④ WIMOD
Trasmissione WIRELESS
WIRELESS transmission

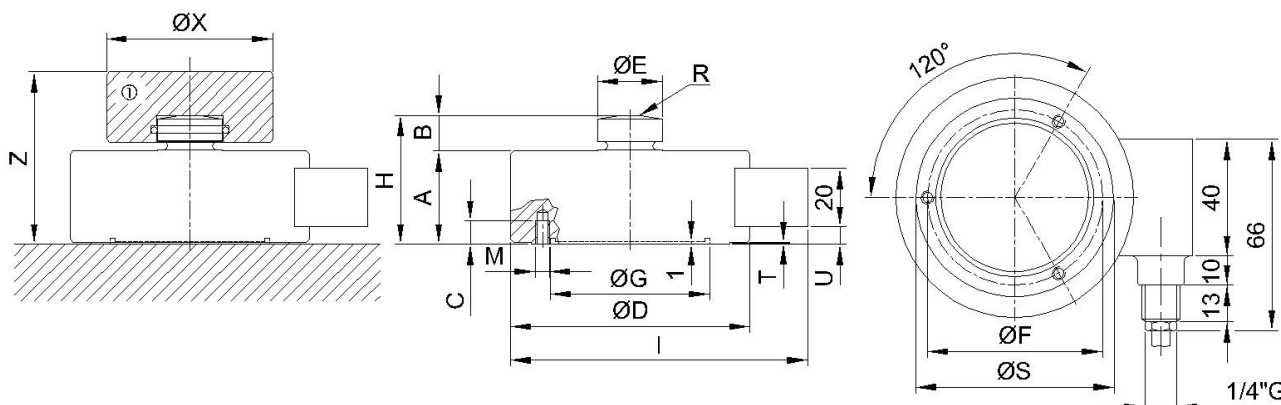


Dimensioni Dimensions

[mm]



CODE (Class C1)	CODE (Class C2)	CODE (Class C3)	LOAD	A	B	C	ØD	ØE	ØF	ØG	H	I	M	n°M	R	ØS	T	U
CC2S82100KC15	CC2S82100KC25	CC2S82100KC35	100 kg	32	12	11	82	22	68	52.3	44	102	M8	3	50	60	0.3	6
CC2S82250KC15	CC2S82250KC25	CC2S82250KC35	250 kg															
CC2S82500KC15	CC2S82500KC25	CC2S82500KC35	500 kg															
CC2S821TC15	CC2S821TC25	CC2S821TC35	1 t															
CC2S822TC15	CC2S822TC25	CC2S822TC35	2.5 t															
CC2S825TC15	CC2S825TC25	CC2S825TC35	5 t															
CC2S827TC15	CC2S827TC25	CC2S827TC35	7.5 t	50	14	12	126	35	90	77.3	64	148	M8	3	160	100	0.5	15
CC2S12620TC15H	CC2S12620TC25H	CC2S12620TC35H	20 t															
CC2S12630TC15H	CC2S12630TC25H	CC2S12630TC35H	30 t															
CC2S16550TC15	CC2S16550TC25	CC2S16550TC35	50 t	60	20	20	165	60	130	92.3	80	188	M16	4	300	115	1	17
CC2S16575TC15	CC2S16575TC25	CC2S16575TC35	75 t															
CC2S165100TC15	CC2S165100TC25	CC2S165100TC35	100 t	80	30	20	200	80	152	107	110	223	M16	4	300	128	1	23
CC2S200150TC15	CC2S200150TC25	/	150 t															
CC2S200200TC15	CC2S200200TC25	/	200 t															



C2S:	CODE	ACCESSORIES (optional):	ACCESSORI (opzionali):	Z	ØX
100, 250, 500 kg	CTIC22	① Loading head.	Testa di carico.	59	57
	CPB120D82	② Mounting plate.	Piastra base	/	/
1, 2.5, 5, 7.5, 10 t	CUPC2	③ Weighing unit.	Unità di pesatura.	/	/
	CTIC35	① Loading head.	Testa di carico.	82	76
20, 30 t	CUPC3	③ Weighing unit.	Unità di pesatura.	/	/
	CTIC60	① Loading head.	Testa di carico.	106	126
50, 75, 100 t	CTIC80	① Loading head.	Testa di carico.	157	128

Dati Tecnici

Technical Data



CLASSE DI PRECISIONE: OIML R60	ACCURACY CLASS: OIML R60	C1	C2	C3
DIVISIONI LEGALI	LEGAL DIVISIONS	1000	2000	3000
CARICO NOMINALE (E _{max})	NOMINAL LOAD (E _{max})	100-250-500 kg 1-2.5-5-7.5-10-20-30-50-75-100-150* -200* t		
INTERVALLO MINIMO DI VERIFICA (V _{min})	MINIMUM VERIFICATION INTERVAL (V _{min})	E _{max} / 10000		
ERRORE COMBINATO	COMBINED ERROR	≤ ±0.045%	≤ ±0.023%	≤ ±0.018%
NON RIPETIBILITA'	NON REPEATABILITY	≤ ±0.015%	≤ ±0.010%	≤ ±0.008%
RITORNO A ZERO dopo 30 min.	ZERO RETURN over 30 min.	≤ ±0.036%	≤ ±0.026%	≤ ±0.016%
CREEP al carico nominale:	CREEP at nominal load:			
a) dopo 30 min.	a) over 30 min.	≤ ±0.035%	≤ ±0.028%	≤ ±0.022%
b) dopo 20 e 30 min.	b) over 20 and 30 min.	≤ ±0.010%	≤ ±0.008%	≤ ±0.005%
EFFETTO DELLA TEMPERATURA (10 °C)	TEMPERATURE EFFECT (10 °C)			
a) sullo zero	a) on zero	≤ ±0.030%	≤ ±0.024%	≤ ±0.020%
b) sulla sensibilità	b) on sensitivity	≤ ±0.030%	≤ ±0.017%	≤ ±0.010%
SENSIBILITA' NOMINALE	NOMINAL SENSITIVITY	2mV/V		
TOLLERANZA DI CALIBRAZIONE	CALIBRATION TOLERANCE	≤ ±0.1%		
RESISTENZA DI INGRESSO	INPUT RESISTANCE	700 ± 2 Ω		
RESISTENZA DI USCITA	OUTPUT RESISTANCE	700 ± 2 Ω		
RESISTENZA DI ISOLAMENTO	INSULATION RESISTANCE	> 5 GΩ		
BILANCIAMENTO DI ZERO	ZERO BALANCE	≤ ± 1%		
ALIMENTAZIONE DI RIFERIMENTO	RECOMMENDED SUPPLY VOLTAGE	10 V		
ALIMENTAZIONE NOMINALE	NOMINAL SUPPLY VOLTAGE	1-15 V		
ALIMENTAZIONE MAX.	MAXIMUM SUPPLY VOLTAGE	18 V		
VALORI MECCANICI LIMITE riferiti al carico nominale:	MECHANICAL LIMIT values referred to nominal load:			
a) carico minimo	a) minimum load	0%		
b) carico di servizio	b) service load	120%		
c) carico limite	c) max permissible load	150%		
d) carico di rottura	d) breaking load	>300%		
e) massimo carico trasversale	e) max transverse load	50%		
f) carico dinamico limite	f) max permissible dynamic load	50%		
CARICO NOMINALE	NOMINAL LOAD	100kg...10t	20t - 30t	50t...100t
FRECCIA MAX. AL CARICO NOMINALE	DISPLACEMENT AT NOMINAL LOAD	~0.06 mm	~0.16 mm	~0.23 mm
TEMPERATURA DI RIFERIMENTO	REFERENCE TEMPERATURE	+23°C		
CAMPO NOMINALE DI TEMPERATURA	TEMPERATURE NOMINAL RANGE	-10/+40 °C		
TEMPERATURA DI ESERCIZIO	SERVICE TEMPERATURE	-20/+70 °C		
TEMPERATURA DI STOCCAGGIO	STORAGE TEMPERATURE	-20/+80 °C		
PESO	WEIGHT	~1.3 kg	~3.4 kg	~9.4 kg
CLASSE DI PROTEZIONE (EN 60529)	PROTECTION CLASS (EN 60529)	IP68 (100h at 1m water column)		
MATERIALE DELLA CELLA	EXECUTION MATERIAL	Acciaio Inox / Stainless Steel		
LUNGHEZZA CAVO	CABLE LENGTH	5m		
VITI DI FISSAGGIO:	FIXING SCREWS			
a) diametro	a) diameter	M8	M8	M16
b) classe di resistenza	b) resistance class	12.9	12.9	12.9
c) coppia di serraggio	c) tightening torque	80 Nm	80 Nm	230 Nm

Accelerazione di gravità g=9.80434 m/s² / Acceleration of gravity g=9.80434 m/s².

* Classe C3 non disponibile per 150t e 200t / C3 class not available for 150t and 200t.

Collegamenti Elettrici Electrical Connections

Load Cell	OUTPUT	CABLE	CAVO	M12 connector (OPTION)	OPZIONE con M12 OPTION with M12:
	EXCITATION+ EXCITATION - OUTPUT+ OUTPUT-	Red Black White Yellow Shield	Rosso Nero Bianco Giallo Schermo	1 3 2 4 5	CONNETTORE M12x1 femmina 4 poli dritto completo di CAVO PVC costampato schermato lunghezza 3m Female 4 poles straight M12x1 CONNECTOR complete PVC molded CABLE, shielded, length: 3m .

Cavo schermato PVC 105°C, Ø5.2mm a 4 conduttori Ø0.35mm² stagnati. Schermo collegato al corpo della cella di carico.
PVC 105°C shielded cable, Ø5.2mm with 4 tinned Ø0.35mm² conductors. Shield connected to the body of the load cell.