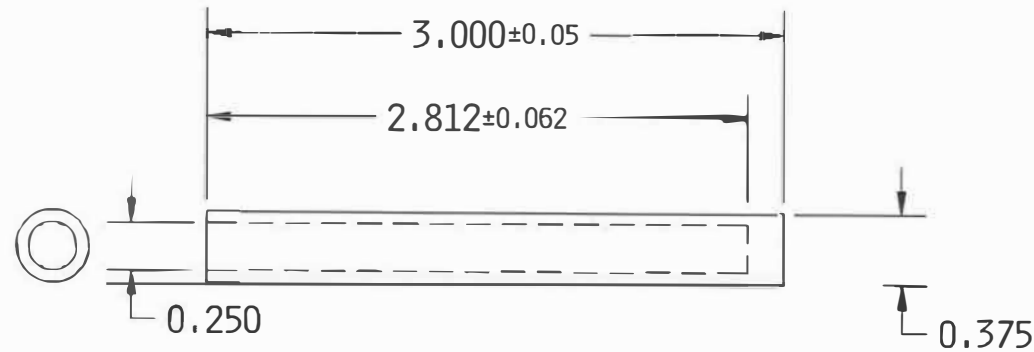
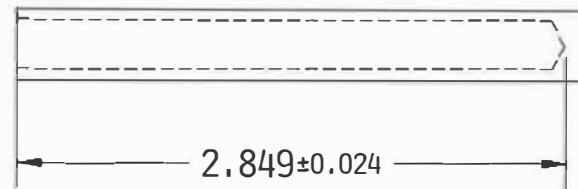


Available with 22 awg 60' and 150' cable



The large tolerance on the 2.812 dimension will accommodate many different tool end shapes while still allowing a reasonable location tolerance. Here is an example using a 118° drill bit.



- Electrical Characteristics:** Thermistor 10Kohms @ 25 C
- Thermal time constant:** 1 second max. in a well stirred oil bath, 10 seconds max. in still air
- Dissipation constant:** 1 mW/°C
- Maximum power rating:** 30 mW at 25°C derated to 1 mW at 125°C
- Interchangeability tolerance of:** ±0.1°C or ±0.2°C from 0-70°C
- Operating temperature:** KT series -80°C to +135°C
- Storage and operation temperatures for best long term stability:** KT = -80° to +120°C

All dimensions in inches

Material - CDA# 314 Or 316 Bronze Rod

TOLERANCES (EXCEPT AS NOTED)	REVISIONS			30 Samuel Barret Blvd. New Bedford, MA 02745 (508) 995-2200 engineering.maximum@imira.com		
	NO.	DATE	BY			
DECIMAL ±0.01	1	4/3/86	P.H.	Water Sensor Rod		
	2	10/11/07	P.H.			
	3	10/12/07	P.H.			
FRACTIONAL NA				DRAWN BY Paul Hutchinson	SCALE 1:1	MATERIAL See Above
ANGULAR ±1.0°					DATE 7/27/1984	DRAWING NO. A-017-09