

# NTP8835C

**High Performance, High Fidelity Power  
Driver Integrated Full Digital Audio Amplifier**

**Datasheet  
ver. 1.0**



## General Description

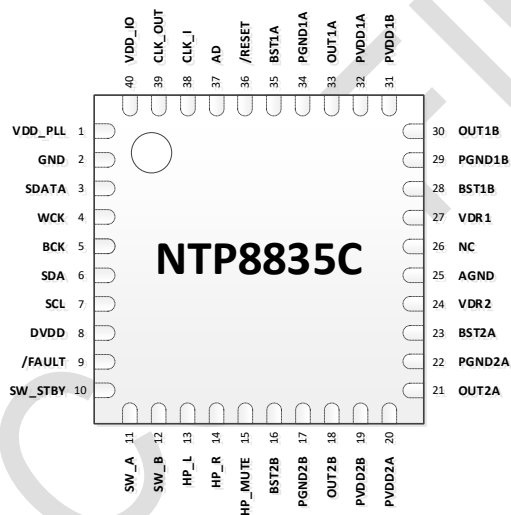
The NTP8835C is a single chip full digital audio amplifier including power stage for stereo amplifier system. The NTP8835C is integrated with versatile digital audio signal processing functions, high-performance, high-fidelity fully digital PWM modulator and two high-power full-bridge MOSFET power stages.

The NTP8835C receives digital serial audio data with sampling frequencies from 8kHz through 192kHz. It delivers 2 x 30 watts in the stereo mode with a heat sink.

The NTP8835C has a mixer and Bi-Quad filters which can be used to implement essential audio signal processing functions such as compensation of a loud speaker response and parametric equalization.

All functions of the NTP8835C can be controlled by internal register values via I<sup>2</sup>C host interface bus.

## Package



( 40 pin SAW QFN 6mm x 6mm Package )

## Features

- 2 CH Stereo (30W x 2 BTL @24V, 4Ω)
- 2.1CH (10W x 2 + 30W @24V, 4Ω)
- SDATA Generator (I<sup>2</sup>S Output)
- Wide Operating Supply Voltage Range (5V to 28V)
- Floating Point Operation
- 25 Programmable Bi-Quad Filters
  - ✓ Speaker Compensation
  - ✓ LPF, HPF
  - ✓ Parametric Equalizer
  - ✓ Loudness Control
- 100dB Dynamic Range
- 2 Band Dynamic Range Control
- 5 Band Graphic Equalizer
  - ✓ 10 GEQs in User mode for LR
- 3D Surround
- Protection Circuit
  - ✓ OCP(Over Current Protection)
  - ✓ OTP(Over Temperature Protection)
  - ✓ UVP(Under Voltage Protection)
- High Efficiency
- Asynchronous Sample Rate Conversion
- DC cut filter

## Applications

- OLED/UHD/FHD TV or Monitor TV
- Docking Station
- Mini-Component Audio Solution

## Ordering Information

Product ID	Package Type	Pin	Size
NTP8835C	SAW QFN	40	6 x 6mm

Contact information: <http://www.n-citron.com>

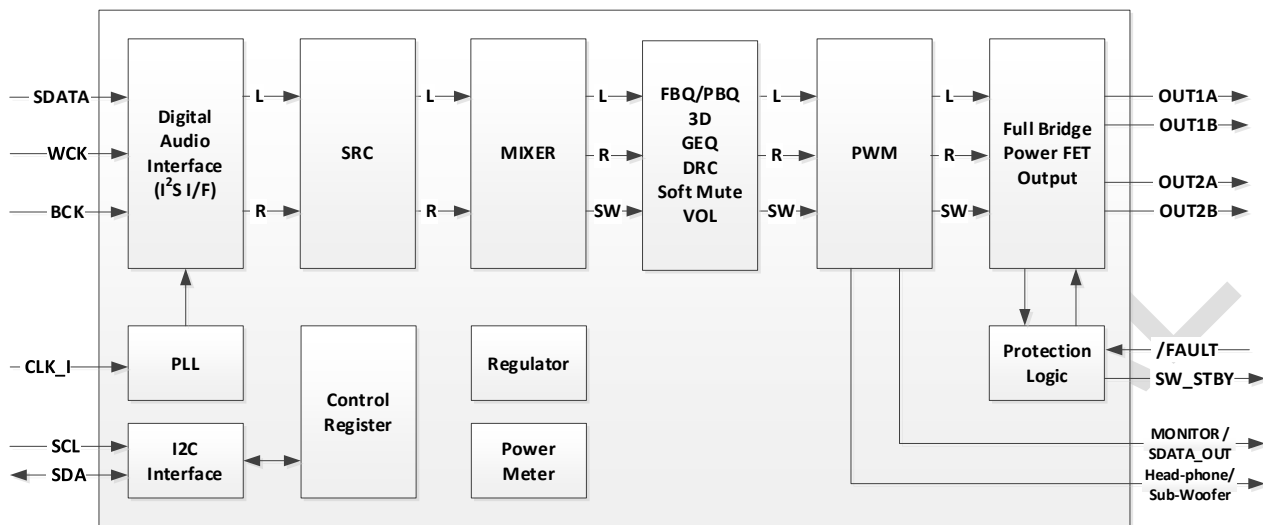
### Disclaimer

NeoFidelity, Inc. subject to change without notice in the product described in this datasheet including circuits, software and ICs, described herein for the purpose of improvement of design and performance. NeoFidelity, Inc. assumes no responsibilities and liabilities for the use of the product, conveys no license under any patent or copyright, and makes no warranties that the product is free from patent or copyright infringement, unless otherwise specified.

## Table of Contents

<b>1.</b>	<b>BLOCK DIAGRAM</b> .....	<b>4</b>
<b>2.</b>	<b>PIN ASSIGNMENTS</b> .....	<b>4</b>
<b>3.</b>	<b>PIN DESCRIPTIONS</b> .....	<b>5</b>
<b>4.</b>	<b>CHARACTERISTICS AND SPECIFICATIONS</b> .....	<b>6</b>
	4.1. Absolute Maximum Ratings .....	6
	4.2. Recommended Operating Conditions .....	6
	4.3. DC Electrical Characteristics .....	6
	4.4. PLL Input Parameters and External Filter Components .....	7
	4.5. Performance Specification.....	7
	4.6.1 Switching Characteristics – I <sup>2</sup> C Control .....	8
	4.6.2 Switching Characteristics – Audio Interface .....	8
<b>5.</b>	<b>I<sup>2</sup>C BUS OF NTP8835C</b> .....	<b>9</b>
	5.1. General Description of I <sup>2</sup> C Bus.....	9
	5.1.1. Writing Operation.....	9
	5.1.2. Reading Operation .....	11
	5.2 I <sup>2</sup> C Glitch Filter .....	12
<b>6.</b>	<b>CLOCK, RESET &amp; CONTROL</b> .....	<b>13</b>
	6.1. System Clock .....	13
	6.2. Timing Sequence (recommend) .....	13
	6.2.1. Power-Up & Initialization Sequence .....	13
	6.2.2. Power-Down Sequence.....	13
	6.3. Timing Sequence 2 (reference) .....	14
	6.3.1. Power-Up & Initialization Sequence .....	14
	6.3.2. Power-Down Sequence.....	14
	6.4. Sound On/Off Sequence .....	15
	6.4.1. 2-channel Sound On/Off Sequence.....	15
	6.4.2. 2.1-channel Sound On/Off Sequence.....	15
<b>7.</b>	<b>AUDIO INPUT</b> .....	<b>16</b>
	7.1. I <sup>2</sup> S and Serial Audio Interface.....	16
	7.1.1. I <sup>2</sup> S Glitch Filter.....	16
	7.2. SDATA Generator.....	16
	7.3. Asynchronous Sample Rate Conversion .....	16
<b>8.</b>	<b>MIXER</b> .....	<b>18</b>
<b>9.</b>	<b>PRE-PROCESSING</b> .....	<b>19</b>
	9.1. Pre Bi-Quad Filter Chain .....	19
	9.2. 3D Surround.....	19
	9.3. Configurable Graphic Equalizer.....	20
	9.4. Post Bi-Quad Filter Chain.....	20
	9.5. Loudness Control .....	21
<b>10.</b>	<b>VOLUME &amp; DYNAMIC RANGE CONTROL</b> .....	<b>22</b>
	10.1. Master Volume Control.....	22
	10.2. Channel Volume Control.....	22
	10.3. Master Volume Fine Control .....	22
	10.4. Mute and Soft Volume Change.....	22
	10.5. Auto Mute .....	22
	10.6. Dynamic Range Control .....	23
<b>11.</b>	<b>OUTPUT INTERFACE</b> .....	<b>24</b>
	11.1. Output Configuration.....	24
	11.2. AM Interference Relief Mode .....	24
	11.3. PWM Output Mapper .....	24
	11.4. Switching Output Mode.....	24
	11.5. Soft Start.....	25
<b>12.</b>	<b>TYPICAL APPLICATION SCHEMATICS (2 Channel)</b> .....	<b>26</b>
<b>13.</b>	<b>TYPICAL APPLICATION SCHEMATICS (2.1 Channel)</b> .....	<b>27</b>
<b>14.</b>	<b>TYPICAL APPLICATION SCHEMATICS (PBTL)</b> .....	<b>28</b>
<b>15.</b>	<b>APPENDIX</b> .....	<b>29</b>
	A. Configuration Register Summary .....	29
	B. Configuration Register Value Reference .....	46
	C. Typical Characteristics Graph.....	51
	D. Outline and Mechanical Data .....	67

### 1. BLOCK DIAGRAM



(SRC → ASRC)

Figure 1. NTP8835C Block Diagram

### 2. PIN ASSIGNMENTS

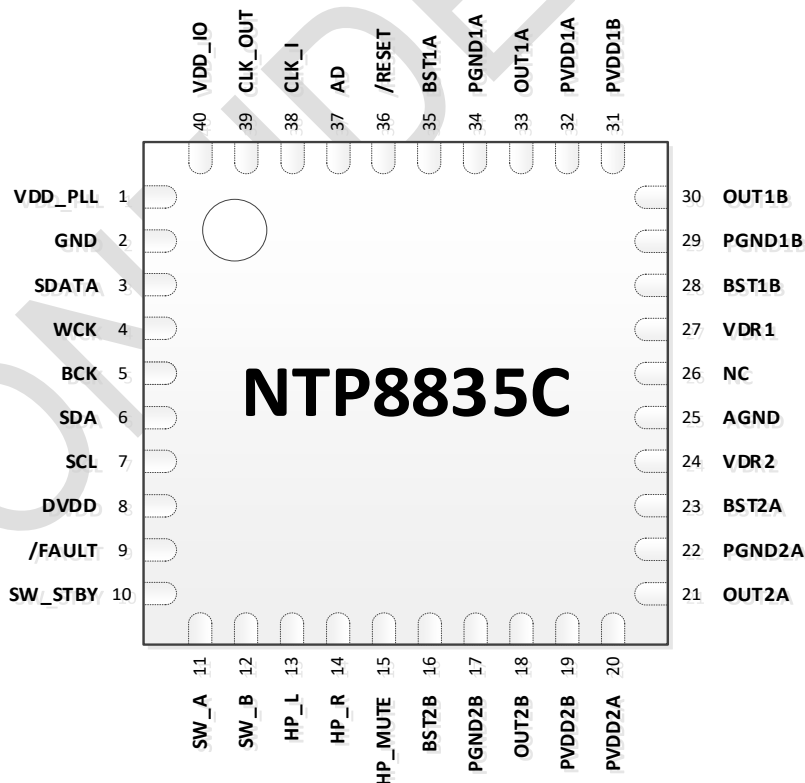


Figure 2. NTP8835C Pin Assignments

### 3. PIN DESCRIPTIONS

PIN	NAME	TYPE	DESCRIPTION
1	VDD_PLL	P	Regulator output for PLL digital block, 1.2V
2	GND	P	This pin should be connected to Ground
3	SDATA	I	I <sup>2</sup> S serial data input
4	WCK	I	I <sup>2</sup> S word clock
5	BCK	I	I <sup>2</sup> S bit clock
6	SDA	I/O	I <sup>2</sup> C data
7	SCL	I	I <sup>2</sup> C clock
8	DVDD	P	Regulator output for Core block, 1.2V
9	/FAULT	I	Active low to reset internal power stage, Pull-up
10	SW_STBY	O	External power device standby control
11	SW_A/ MONITOR_0	O	Sub-Woofer_A/Monitoring signal out from processor block
12	SW_B/ MONITOR_1	O	Sub-Woofer_B/Monitoring signal out from processor block
13	HP_L	O	Left audio channel Headphone signal
14	HP_R	O	Right audio channel Headphone signal
15	HP_MUTE	O	External Headphone mute signal
16	BST2B	P	Bootstrap supply, external capacitor to OUT2B is required
17	PGND2B	P	Ground
18	OUT2B	O	Power stage PWM output 2B
19	PVDD2B	P	Power supply for PWM Power stage 2B
20	PVDD2A	P	Power supply for PWM Power stage 2A
21	OUT2A	O	Power stage PWM output 2A
22	PGND2A	P	Ground
23	BST2A	P	Bootstrap supply, external capacitor to OUT2A is required
24	VDR2	P	Gate drive voltage regulator decoupling pin, capacitor to GND is required
25	AGND	P	Ground
26	NC	-	No connection
27	VDR1	P	Gate drive voltage regulator decoupling pin, capacitor to GND is required
28	BST1B	P	Bootstrap supply, external capacitor to OUT1B is required
29	PGND1B	P	Ground
30	OUT1B	O	Power stage PWM output 1B
31	PVDD1B	P	Power supply for PWM Power stage 1B
32	PVDD1A	P	Power supply for PWM Power stage 1A
33	OUT1A	O	Power stage PWM output 1A
34	PGND1A	P	Ground
35	BST1A	P	Bootstrap supply, external capacitor to OUT1A is required
36	/RESET	I	Active low to reset NTP8835C, Schmitt trigger input
37	AD	I	I <sup>2</sup> C device address selection
38	CLK_I	I	System master clock input
39	CLK_OUT	O	System master clock output
40	VDD_IO	P	Power supply for digital interface I/O, 3.3V
-	Thermal Pad	P	This pad should be connected to Ground

P = Power Supply or Ground, I = Input, O = Output, I/O = Input / Output

**Table 1. NTP8835C Pin Description**

## 4. CHARACTERISTICS AND SPECIFICATIONS

### 4.1. Absolute Maximum Ratings

Parameter	Reference	Rating	Unit
DVDD voltage	DGND	-0.3 ~ 1.5	V
VDD_IO voltage	GND_IO	-0.3 ~ 5.25	V
Logic input voltage	GND	-0.3 ~ 5.25	V
Logic output voltage	GND	-0.3 ~ 5.25	V
PVDDXX voltage	PGNDXX	30	V
OUTXX voltage	PGNDXX	-0.3 ~ PVDDXX	V
BSTXX voltage	PGNDXX	36.0	V
VDRX voltage	PGNDXX	-0.3 ~ 6.0	V
Junction Temperature	T <sub>J</sub>	150	°C

### 4.2. Recommended Operating Conditions

Parameter	Reference	Min	Typ	Max	Unit
VDD_IO voltage	GND_IO	3.0	3.3	3.6	V
PVDDXX voltage	PGNDXX	5		28	V
VDRX voltage	PGNDXX		5.1		V
Ambient operating Temperature	T <sub>AMB</sub>	-25		85	°C

### 4.3. DC Electrical Characteristics

Parameter	Symbol	Condition	Min	Typ	Max	Unit
<b>Logic Block</b> (VDD_IO=3.3V, T <sub>A</sub> =+25°C, unless otherwise specified.)						
Input High voltage	V <sub>IH</sub>	-	2.0			V
Input Low voltage	V <sub>IL</sub>	-	-0.5		0.8	V
Schmitt trig. Low to High threshold point	V <sub>T+</sub>	-	2		3.6	V
Schmitt trig. High to Low threshold point	V <sub>T-</sub>	-	-0.5		0.8	V
Input current	I <sub>I</sub>	V <sub>IN</sub> =V <sub>IL</sub> MAX, DVDD=MIN	-50			uA
		V <sub>IN</sub> =V <sub>IH</sub> MIN, DVDD=MIN			50	uA
Input leakage current	I <sub>L</sub>	V <sub>IN</sub> =V <sub>SS</sub> , DVDD=MIN	-10		10	uA
Output Low voltage	V <sub>OL</sub>	I <sub>OL</sub> = -4mA	0		0.4	V
Output High voltage	V <sub>OH</sub>	I <sub>OH</sub> = 4mA	2.4		3.6	V
LDO output voltage	V <sub>LDO</sub>	DVDD	1.08		1.32	V
<b>Power Driver Block</b> (PVDD=24V, T <sub>A</sub> =+25°C, unless otherwise specified.)						
Current consumption	I <sub>CC</sub>	VDD_IO=3.3V, No Input, No Load		30		mA
	I <sub>PVDD</sub>	PVDD=24V, No Input, 8 Ω Load with 10uH		95		
Peak current limit	OCP	-		6		A
Thermal shutdown temperature	OTP	-	140	150	160	°C
Under voltage protection limit	UVP	-		4.2		V

**4.4. PLL Input Parameters and External Filter Components**

Parameter	Min	Typ	Max	Unit
MCLK frequency range	2.048		49.152	MHz
MCLK duty cycle	20	50	80	%
Rise/fall time for MCLK			5	ns
MCLK square wave jitter			0.1	UI
External PLL filter capacitor C10		220		nF
External PLL filter capacitor C11		22		nF
External PLL filter resistor R13		220		$\Omega$

**4.5. Performance Specification**

Parameter	Condition	Min	Typ	Max	Unit
SNR	AES17, A-weighting filter		95	100	dB
THD+N	1W, 1kHz		0.1		%
P <sub>OUT</sub>	Peak output power		30		W
Cross talk			67		dB
Output noise voltage	P <sub>VDD</sub> =24V		500		$\mu$ V
Efficiency	P <sub>VDD</sub> =12V, P <sub>OUT</sub> =15W@ 6 $\Omega$ , THD 1%		90		%
PWM frequency			384		KHz

### 4.6.1 Switching Characteristics – I<sup>2</sup>C Control

Parameter	Symbol	Condition	Min	Max	Unit
<b>I<sup>2</sup>C Control Port</b>					
SCL clock frequency	F <sub>scl</sub>		-	400	kHz
Hold time for START condition	T <sub>hdsta</sub>		600	-	ns
Low period of the SCL clock	T <sub>low</sub>		1300	-	ns
High period of the SCL clock	T <sub>high</sub>		600	-	ns
Rise time of SDA and SCL signals	T <sub>rise</sub>		-	300	ns
Fall time of SDA and SCL signals	T <sub>fall</sub>		-	300	ns
Setup time for STOP condition	T <sub>susto</sub>		600	-	ns

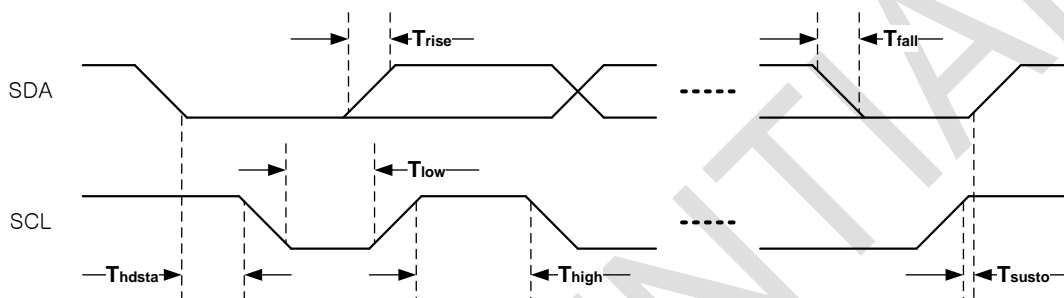


Figure 3. I<sup>2</sup>C Mode Timing

### 4.6.2 Switching Characteristics – Audio Interface

Parameters	Symbol	Min	Max	Unit
BCK high time	t <sub>bh</sub>	20	-	ns
BCK low time	t <sub>bl</sub>	20	-	ns
SDATA setup time before BCK rising edge	t <sub>ds</sub>	10	-	ns
SDATA hold time after BCK rising edge	t <sub>dh</sub>	10	-	ns
WCK setup time before BCK rising edge	t <sub>ws</sub>	20	-	ns
BCK rising edge before WCK edge	t <sub>wh</sub>	20	-	ns
BCK falling edge before WCK edge	t <sub>wl</sub>	-20	20	ns
Rising/Falling time for BCK/WCK	t <sub>br</sub> /t <sub>bf</sub> /t <sub>wrf</sub>	-	50	ns

※ Schmitt trigger characteristics (V<sub>SIH</sub> Min = 1.85V, V<sub>SIH</sub> Max = 0.9V)

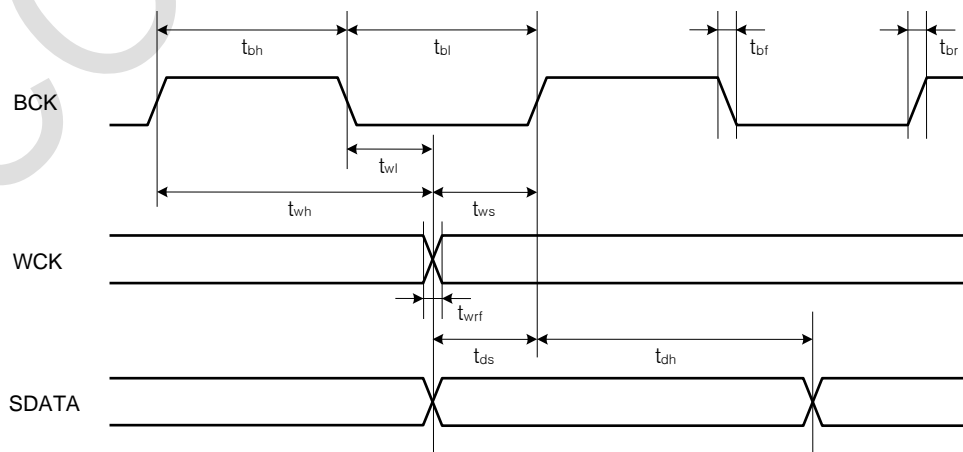


Figure 4. Audio Interface Timing



## 5. I<sup>2</sup>C BUS OF NTP8835C

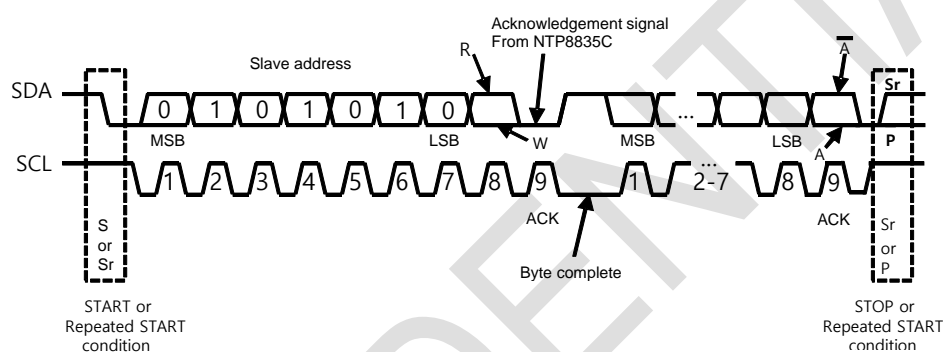
The NTP8835C uses an industry standard Inter IC Control (I<sup>2</sup>C) bus to communicate with host IC. A host IC can write or read internal registers of the NTP8835C via the I<sup>2</sup>C bus.

### 5.1. General Description of I<sup>2</sup>C Bus

The I<sup>2</sup>C bus uses two signal lines – a serial clock line (SCL) and a serial data line (SDA). Because the SDA line is open-drain type port, both the NTP8835C and a host IC can only drive these pins low or leave them open.

In I<sup>2</sup>C bus, a master device means the device which generates serial clock on the SCL. A slave device means the device which receives serial clock. There can be many master and slave devices on an I<sup>2</sup>C bus. But, when one master device works on the bus, the other master devices should not generate signal on the lines. These unexpected interrupts can make other slave devices to fail to communicate with the mater device.

The NTP8835C supports only slave mode of I<sup>2</sup>C bus. So, the NTP8835C always receives serial clock from a host IC. The slave mode is enough to write/read data to/from the NTP8835C.



**Figure 5. Basic Signaling Elements of I<sup>2</sup>C Bus**

If there is no communication on I<sup>2</sup>C bus, two signal lines must keep in high state. I<sup>2</sup>C bus begins communication with the start condition and ends communication with the stop condition. The start condition can be generated by changing the SDA state high to low, during the SCL state remains in high. The stop condition can be generated by changing the SDA state low to high during the SCL remains in high state. Be aware that the stop condition always reset the internal status of I<sup>2</sup>C bus control logic. Except these two conditions, the SDA may not change during the SCL in high state. Otherwise, abnormal start or stop condition will be generated.

I<sup>2</sup>C bus transfers the MSB (most significant bit) of a byte on 1st data slot and the LSB (least significant bit) of a byte on 8th data slot. I<sup>2</sup>C bus checks success or fail of transfer on every 1 byte transfer. The device which found an expected data on SDA must generate acknowledgement (keep low on SDA) on 9th clock. If there is no acknowledgement on 9th clock, the device which generated a data on SDA may stop transfer. The NTP8835C will generate acknowledgement for every successful data transfer of 1 byte in write mode. But, in read mode, because data is generated by the NTP8835C, the NTP8835C will not generate an acknowledgement. In this case, on the contrary, the NTP8835C will check SDA state on 9th clock that the master device received a read data properly.

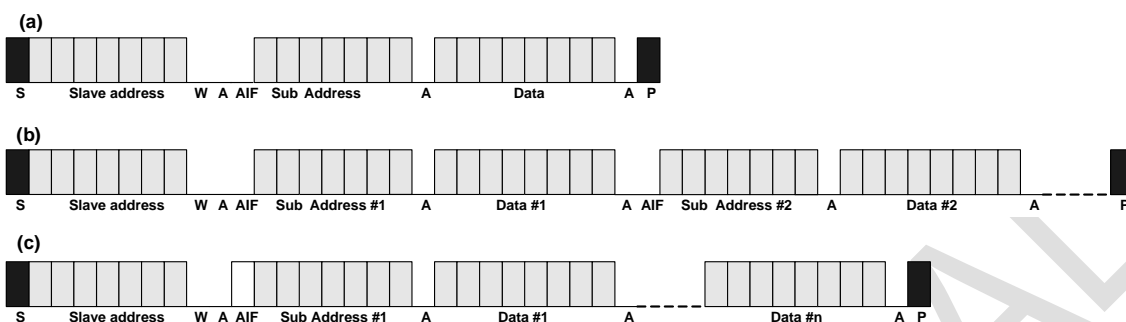
Last 8th bit of the 1st byte is used to indicate whether the master device want to write or read data.

#### 5.1.1. Writing Operation

When last 8th bit of the 1st byte is set to low state, the writing operation of I<sup>2</sup>C bus begins. The NTP8835C supports 3 kinds of writing operations which are presented on **Figure 6**.

The type presented on **Figure 6-(a)** is single byte write operation. "Sub Address" on 2nd byte means the internal register address of the NTP8835C. The "Data" on 3rd byte will be written into the internal register address on "Sub Address". If the stop condition is not generated, writing "Data" on specific "Sub Address" can be repeated like **Figure 6-(b)**. "Data #n" will be written on "Sub Address #n".

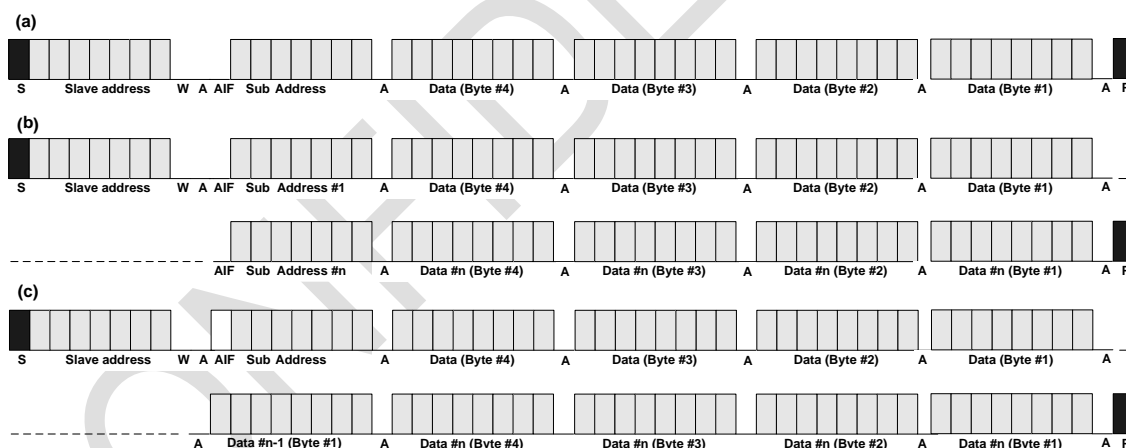
The type presented on **Figure 6-(c)** is burst byte write operation under address auto increment mode. The AIF on 1st bit of 2nd byte is the address auto increment flag. If SDA is set to high state on AIF slot, the NTP8835C writes data continuously with register addresses which are increased from initial “Sub Address” for every byte; “Data #n” will be written on “Sub Address” + n – 1. The internal address will cycle automatically.



**Figure 6. Single Byte Write Mode Sequence**

**Figure 7-(a)**, **Figure 7-(b)**, and **Figure 7-(c)** represent 4 byte writing operations. Coefficient mode address 0x00~0x6B are used to configure Bi-Quad filter coefficients, loudness filter gains and DRC attack gain. The data size of these coefficients and gains is 4 byte for each. The difference between 4 byte writing operation and single byte writing operation is only the size of transferring data. So, after sending “Sub Address”, 4 sequential bytes must be transferred from the MSB(most significant byte) to the LSB(least significant byte) sequence.

The type presented on **Figure 7-(c)** is quad byte write operation under address auto increment mode, AIF function. Please compare the data transfer size between **Figure 6** and **Figure 7**.



**Figure 7. Quad Byte Write Mode Sequence**

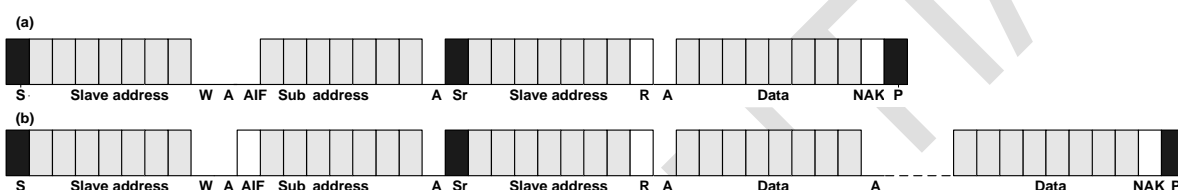
In write operation, the address 0x7E register needs to be set first for performing the configuration of the registers. If the 0x7E register is configured to 0x00, the NTP8835C supports byte write operation. Otherwise, 4 byte writing operation is supported.

Each Bi-Quad filter uses 5 coefficients. Any unexpected coefficient value changes on any part of 5 coefficients can generate unstable Bi-Quad filter response. For example, if only one of 5 coefficients for a Bi-Quad filter is changed and downloaded, its combined 5-coefficient set can have unstable operation while old and new coefficients are mixed together. Therefore to prevent this kind of problem, the NTP8835C writes coefficients to coefficient memory only when the last 5th coefficients of each Bi-Quad filter is downloaded, which means all of 5 coefficients are fully ready. Please refer to 9.1 for more detailed operation.

### 5.1.2. Reading Operation

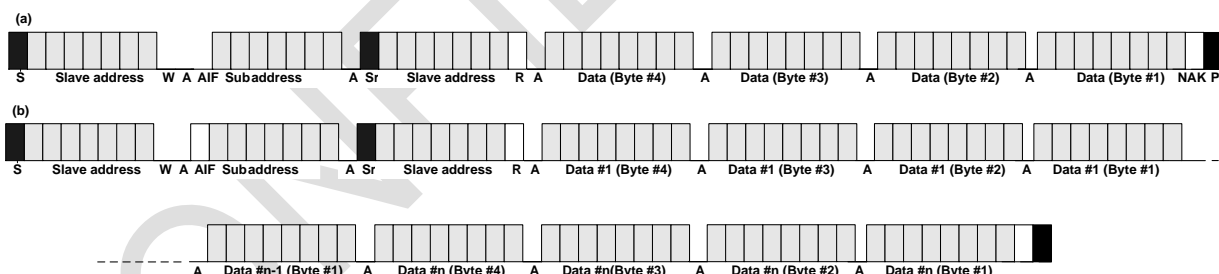
**Figure 8-(a)** represents single byte reading operation from the NTP8835C. To read data from the NTP8835C, generate the start condition to start transfer. After then, send “Slave Address” with write mode flag and send the register address(Sub Address). By regenerating start condition (Sr) again and transferring “Slave Address” with read mode flag, reading operation begins. The NTP8835C will generate data on SDA signal synchronizing with serial clocks on the SCL. Because the SDA signal is generated from the NTP8835C, the master device must generate ACK on 9th slot to confirm that the master received 1 byte successfully. However, if this is just one byte reading operation, NAK (not acknowledged) signal must be generated. Then the stop condition must be generated to end transfer.

When the AIF is set to high on “Sub Address” like Figure 8-(b), data will be read continuously with register addresses which are increased from initial “Sub Address” for every byte. To continue reading operation in this case, the master must generate ACK signal on every 9th slot to confirm that the master received 1 byte successfully. Otherwise, reading operation will be terminated. To end address auto increment reading operation, generate NAK on 9th slot and the stop condition.



**Figure 8. Single Byte Read Mode Sequence**

**Figure 9** represents quad byte reading operation. The difference between quad byte reading operation and single byte reading operation is only the size of receiving data. So, after sending “Sub Address”, 4 sequential bytes must be received from the MSB to the LSB sequence. The type presented on **Figure 9-(b)** is quad byte read operation under address auto increment mode, AIF function. Please compare the data receive size between **Figure 8** and **Figure 9**.



**Figure 9. Quad Byte Read Mode Sequence**

As mentioned above at Writing Operation, the address 0x7E register must be set as proper value for single or quad byte reading operation.

**5.2 I<sup>2</sup>C Glitch Filter**

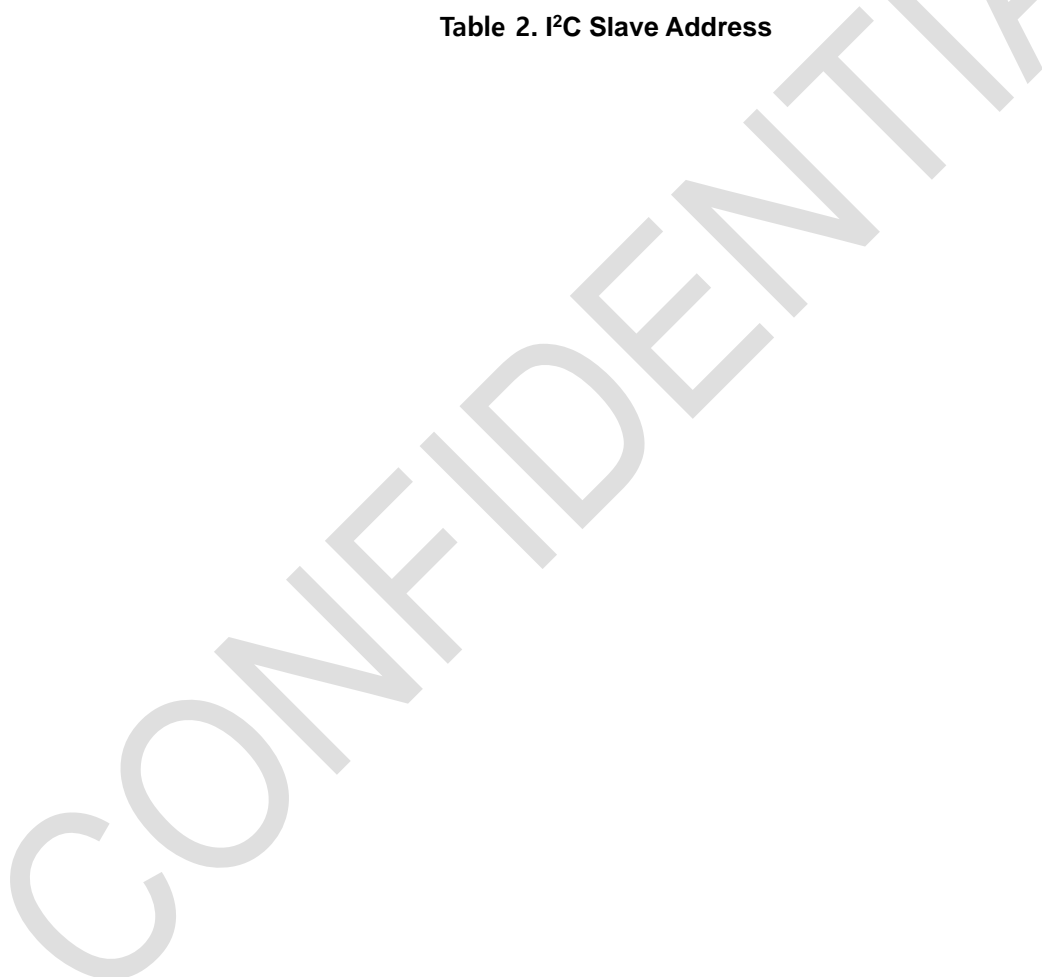
To clean out the threats of noise in today’s high-speed-board system, the NTP8835C has a glitch elimination filter on the I<sup>2</sup>C ports. Glitches in the transmission lines of the I<sup>2</sup>C port can be safely removed with this function. Please refer to the register 0x39.

**5.3. I<sup>2</sup>C Slave Address**

The NTP8835C supports up to four slave addresses. So, four NTP8835C can be connected to the same MCU at the same time. For multi-chip operation, use the proper I<sup>2</sup>C slave address according to AD pin and the initial state of MONITOR\_0 pin as shown in **Table 2**.

		MONITOR_0 Pin		
Pin name	Value	Pull-down ('L')	Pull-up ('H')	No pd / pu (default: 'L')
AD	0	Addr : 0x54	Addr : 0x58	Addr : 0x54
	1	Addr : 0x56	Addr : 0x5A	Addr : 0x56

**Table 2. I<sup>2</sup>C Slave Address**



## 6. CLOCK, RESET & CONTROL

### 6.1. System Clock

The internal system clock of the NTP8835C is generated from an external master clock by the on-chip PLL. The NTP8835C supports external master clock frequency from 2.048MHz to 24.576MHz. For proper operation, the registers for the PLL should be set correctly according to master clock frequency (Address 0x02).

### 6.2. Timing Sequence 1 (recommend)

For proper power up, initialization and power down of the NTP8835C, it is recommend to use the following sequence as shown in **Figure 10**.

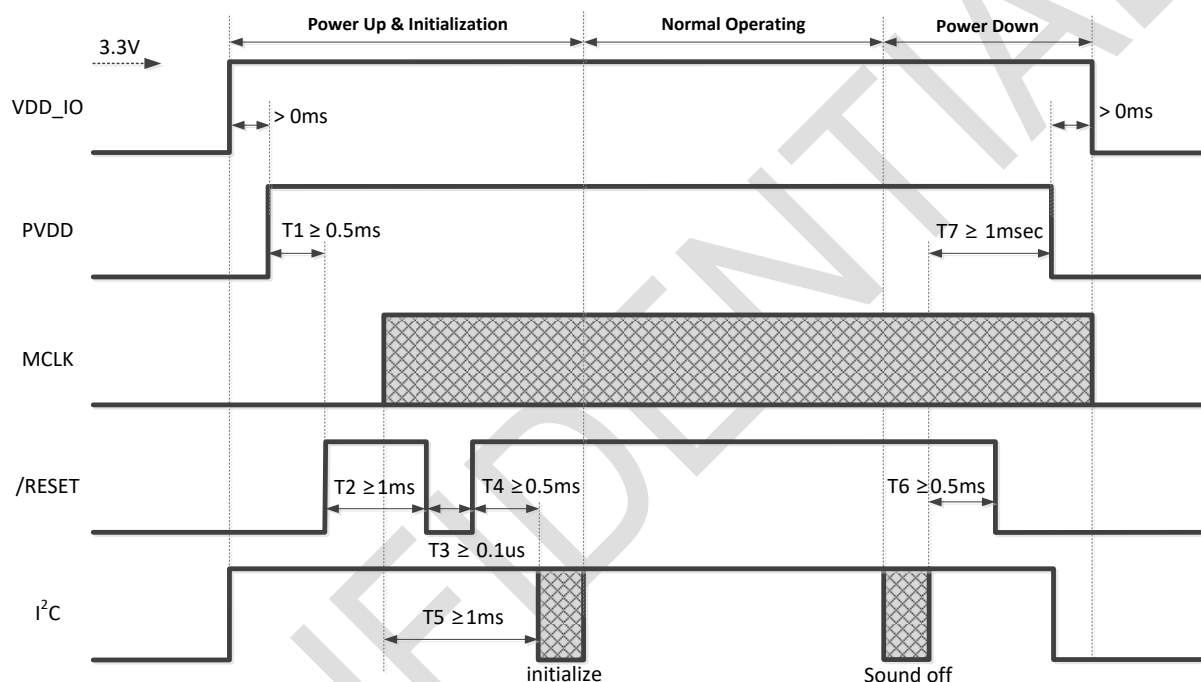


Figure 10. Timing Sequence 1

#### 6.2.1. Power-Up & Initialization Sequence

- 1) Ramp up VDD\_IO to at least 3.3V.
- 2) Ramp up PVDD.
- 3) After 0.5msec ( $T1 \geq 0.5msec$ ), drive /RESET = High, and then wait for at least 1msec ( $T2 \geq 1msec$ ).
- 4) Hold /RESET Low for at least 0.1usec ( $T3 \geq 1usec$ )
- 5) Drive /RESET = High, and then wait for at least 0.5msec for I<sup>2</sup>C communication ( $T4 \geq 0.5msec$ ).
- 6) MCLK signal should arrive at least 1msec before I<sup>2</sup>C initialization sequence ( $T5 \geq 1msec$ ).
- 7) Execute both amp initialization sequence (e.g. clock, volume, DRC, PEQ setup) and sound on sequence.

#### 6.2.2. Power-Down Sequence

- 1) When both DC and AC power are off, make sure to execute sound off sequence.
- 2) Switch /RESET to Low after sound off sequence ( $T6 \geq 0.5msec$ ).
- 3) MCLK and I<sup>2</sup>C should be Low after sound off sequence ( $T7 \geq 0.5msec$ ).
- 4) After I<sup>2</sup>C is Low, ramp down VDD\_IO.

### 6.3. Timing Sequence 2 (reference)

Following figure illustrates another timing sequence, which is conforming to the legacy reset timing.

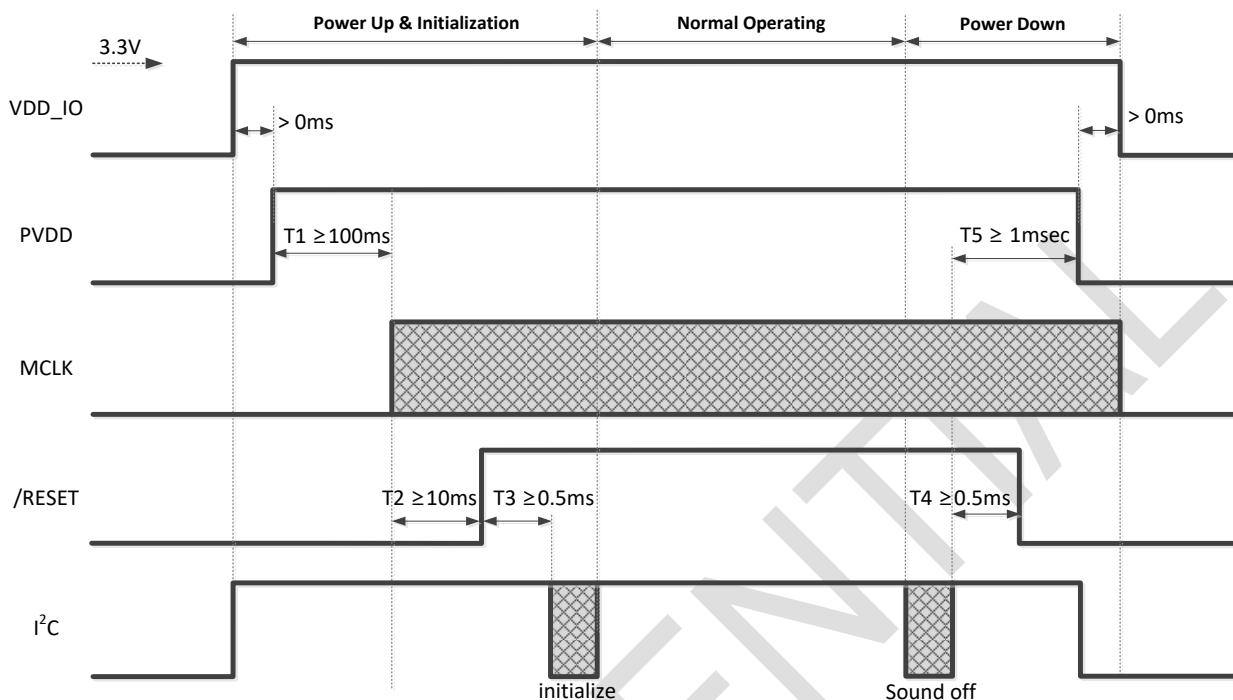


Figure 11. Timing Sequence 2

#### 6.3.1. Power-Up & Initialization Sequence

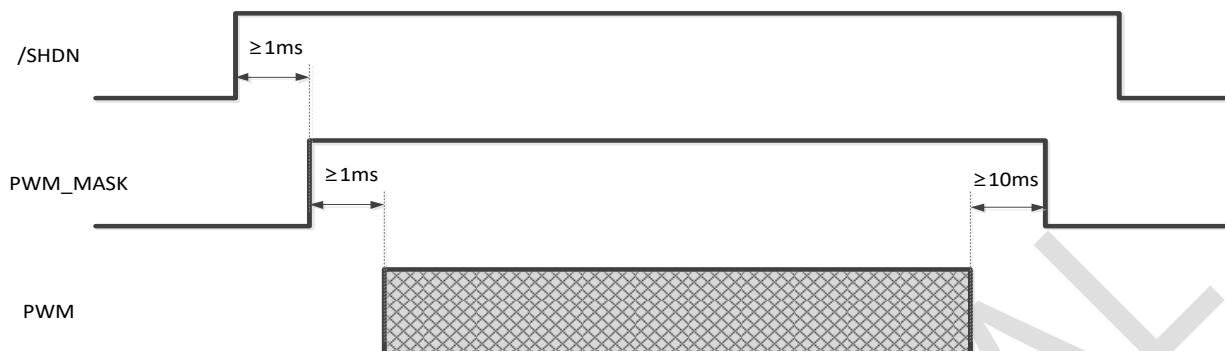
- 1) Ramp up VDD\_IO to at least 3.3V.
- 2) Ramp up PVDD.
- 3) Drive MCLK signal at least 100ms after PVDD (T1≥100msec).
- 4) At least 10ms after MCLK, Drive /RESET = High(T2≥10msec).
- 5) Wait for at least 0.5msec for I<sup>2</sup>C communication (T3≥0.5msec) and keep the status.
- 6) Execute both amp initialization sequence (e.g. clock, volume, DRC, PEQ setup) and sound on sequence.

#### 6.3.2. Power-Down Sequence

- 5) When both DC and AC power are off, make sure to execute sound off sequence.
- 6) Switch /RESET to Low at least 0.5 msec after sound off sequence (T4≥0.5msec).
- 7) Ramp down PVDD at least 1 msec after sound off sequence (T5≥1msec).
- 8) After I<sup>2</sup>C is Low, ramp down VDD\_IO.

### 6.4. Sound On/Off Sequence

For proper sound on/off of NTP8835C, use the following sequence as shown in **Figure 12**.



**Figure 12. Sound On & Off Sequence**

To prevent pop noise when enabling or disabling the amplifier, the above sequences are recommended.

#### 6.4.1. 2-channel Sound On/Off Sequence

##### A. Sound On Sequence

To turn on the amplifier, first, make the PWM mask high, and then turn on the PWM switching. Finally, apply the soft mute for increasing the output. The register settings are 0x04@0x28, 0x00@0x27, and 0x00@0x26, respectively.

##### B. Sound Off Sequence

To turn off the amplifier, reverse the sequence of the sound on; that is to say, apply the soft mute for decreasing the output, turn off the PWM switching, and make the PWM mask low. The register settings are 0x07@0x26, 0x07@0x27, and 0x06@0x28, respectively.

#### 6.4.2. 2.1-channel Sound On/Off Sequence

##### A. Sound On Sequence

Only difference from the 2-channel sound on sequence is that the PWM switching on of the channel 3 should be applied after the channel 1 and 2. Therefore, the sound on sequence for 2.1-channel is as follows: firstly, make the PWM mask low, and, secondly, turn on the PWM switching for channel 1 and 2. Thirdly, turn on the PWM switching for channel 3, and finally, apply the soft mute for increasing the output. The register settings are 0x04@0x28, 0x04@0x27, 0x00@0x27, and 0x00@0x26, respectively.

##### B. Sound Off Sequence

The sound off sequence is exactly the same as that in the 2-channel case.

## 7. AUDIO INPUT

### 7.1. I<sup>2</sup>S and Serial Audio Interface

The NTP8835C receives audio data through digital audio interface. There are 2 different formats generally used in digital audio interface - the Inter-IC Sound (I<sup>2</sup>S) Interface and General Serial Audio Interface (GSA). These two interfaces have some common features.

This interfaces uses 2 clock lines and 1 data line to transfer audio data. One of these clock lines is WCK. A period of WCK is same with sampling period of audio data i.e. 64bits (32bits for each channel). One of the main function of WCK defines the channels, the low state of WCK indicates the 1st channel i.e. left channel and the high state indicates the 2nd channel i.e. right channel. This feature enables the clock receiving device to synchronize the data word-wise for transmitting or receiving from clock generating device.

The another clock line is BCK. This clock line is used to synchronize the bit-wise data. The number of BCK clock during one WCK period can be configurable. The name of data transfer line is SDATA. The data being synchronized with BCK must be loaded on this line. The NTP8835C receives data on the rising edge of BCK. The bit range for I<sup>2</sup>S is predefined. Please refer to in **Figure 13**.

#### 7.1.1. I<sup>2</sup>S Glitch Filter

To clean out the threats of noise in today's high-speed-board system, the NTP8835C has a glitch elimination filter on the I<sup>2</sup>S ports. Glitches in the transmission lines of the I<sup>2</sup>S port can be safely removed with this function. Please refer to the register 0x61.

### 7.2. SDATA Generator

The SDATA generator of NTP8835C sends out I<sup>2</sup>S out signals. In order for SDATA out process to function stably, the falling of BCK should either synchronize or occur ahead of falling or rising of WCK. Since SDATA generation is synchronous to the input WCK and BCK signals, NTP8835C must be in a slave mode from the point of the I<sup>2</sup>S signals. Additionally, the master of I<sup>2</sup>S signals, and NTP8835C should be synchronous. In other words, they have to use the same system clock source to generate SDATA from NTP8835C.

Refer to the register address 0x5F in the **Appendix A** and refer to the **4.6. Switching Characteristics – Audio Interface**.

### 7.3. Asynchronous Sample Rate Conversion

NTP8835C provides ASRC(Asynchronous Sample Rate Conversion) for input data sample rate from 8kHz to 192kHz.

ASRC can give seamless data continuity when clock sources of input I<sup>2</sup>S and MCLK are different. Another benefit of ASRC is audio processing can be done without any change of register settings when there happens an alteration in the input sample rate.

If ASRC is to be used, the LSB of 0x56 register, i.e. BYPASS, should be set as '0'. The default setting of BYPASS in the 0x56 register is '1', which means ASRC is disabled and synchronous conversion is applied.



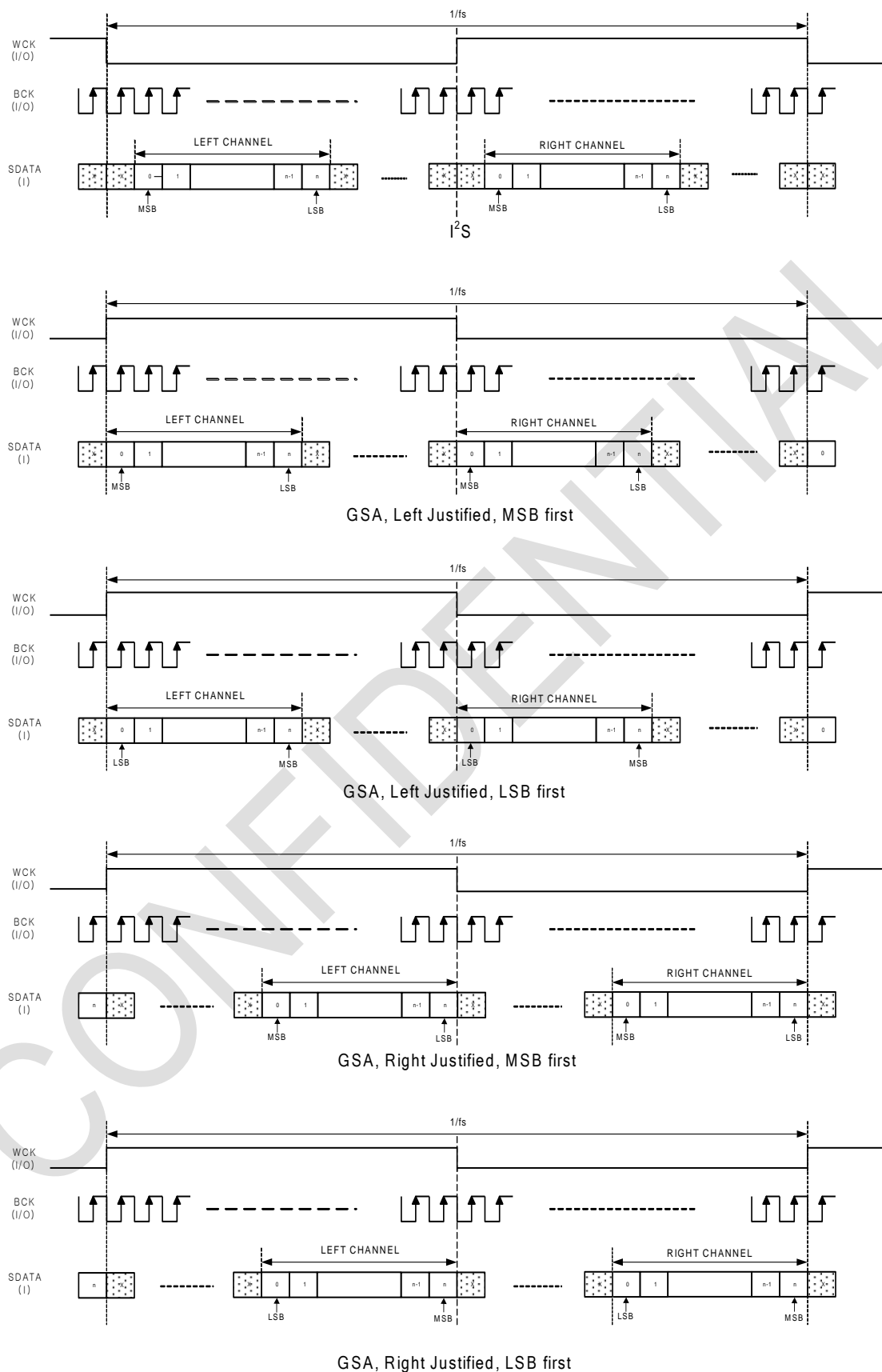


Figure 13. Serial Audio Interface Format

### 8. MIXER

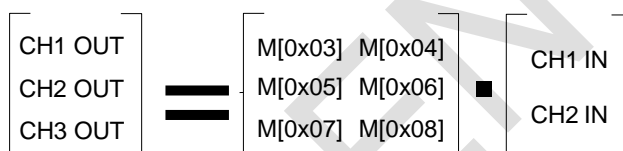
Channel mixer can be used in lots of application needs like pseudo stereo and etc. User can mix input channels into each output channels with designated gains and polarity. Step size of mixer gain is variable according to the gain level as shown below.

Volume Range (dB)	Step (dB)
+18 ~ +6	1
+5.5 ~ -5.5	0.5
-6 ~ -32	1
≤ 32	-∞

**Table 3. Variable Step Mixing Gain**

In total, 6 mixing gain coefficients denoted as M[0x03], M[0x04], M[0x05], ... M[0x08] are defined as shown in the equation below. Each Mxx stores volume value in dB scale, and the number values versus gain in dB are shown in the **Appendix B**.

$$[\text{Output Channels}] = [\text{Mixer Matrix}] \times [\text{Input Channels}]$$



**Figure 14. Mixer Matrix**

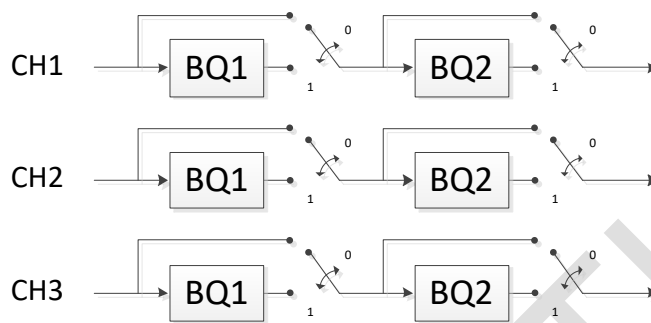
In order to load mixer coefficients into internal memory, send the index value in the gain value table to the register address 0x03 ~ 0x08.

## 9. PRE-PROCESSING

### 9.1. Pre Bi-Quad Filter Chain

The NTP8835C has two kinds of Bi-Quad filter chains. One is pre Bi-Quad filter chain and the other is post Bi-Quad filter chain for bass management, loudness control, loud-speaker EQ, etc.

Pre Bi-Quad filter chain consists of two 2<sup>nd</sup> order Bi-Quad filters as shown in **Figure 15**.

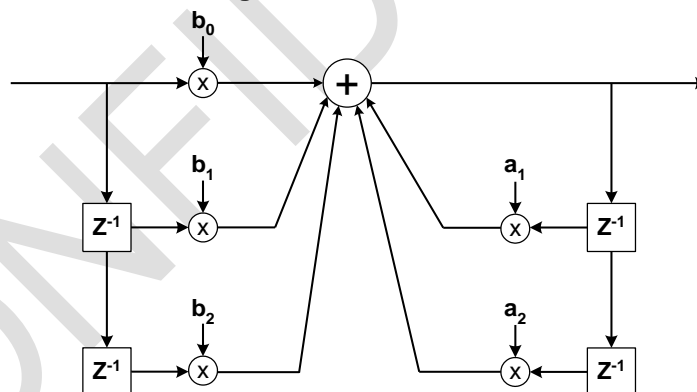


**Figure 15. Pre Bi-Quad Filter Structure**

Filter coefficients are 32-bit floating point numbers and can be downloaded thru I<sup>2</sup>C interface. To download the pre Bi-Quad filter coefficients to internal memory of NTP8835C, designer should change the flags of register address 0x7E to 'enable coefficient write' status.

When CH1(or CH2 or CH3) Flag of register address 0x7E is set to 1, coefficient mode register address 0x00~0x04 designates the coefficients of 1<sup>st</sup> Bi-Quad filter of channel 1(or channel 2 or channel 3) and indicates  $b_0$ ,  $b_1$ ,  $b_2$ ,  $a_1$ ,  $a_2$  respectively. And coefficient mode register address 0x05~0x09 designates the coefficients of 2<sup>nd</sup> Bi-Quad filter of channel 1(channel 2 or channel 3).

The Bi-Quad filter structure is shown in **Figure 16**.



**Figure 16. Bi-Quad Filter Structure**

### 9.2. 3D Surround

3D surround expands the sound field of two channel stereo to the extent that is wider than the actual speaker spacing. Because this feature is acoustically valid for two channel signal, no other channels except channel 1/2 have this internal block.

NTP8835C realizes the 3D effect by combining delay and band-pass filter. At first, define the size of delay by using register address 0x0D. Possible maximum delay is 40 samples delay and this is about 0.4msec based on 96kHz signal input.

And then download the band-pass filter coefficients to internal memory of NTP8835C (same with the Bi-Quad filter coefficient download procedure). The BPF is two 2<sup>nd</sup> order IIR filter. Each channel can have different BPF. Change the 3D flag status of register address 0x7E to 'enable coefficient write' status and write the actual coefficient values to ten register addresses 0x0A~ 0x13. Also, internal 2x2

mixer helps ease of design. For using 3D mixer, download the gain values to two coefficient mode register addresses 0x3C~0x3D.

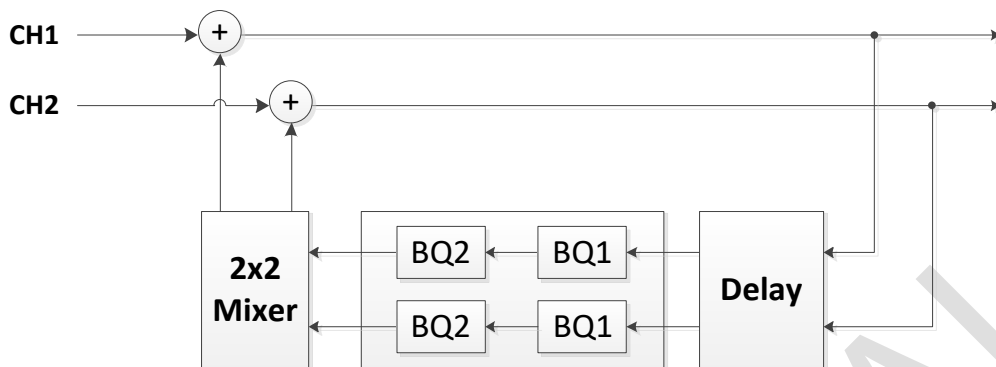


Figure 17. 3D Surround Structure

### 9.3. Configurable Graphic Equalizer

The NTP8835C provides 5 band graphic equalizer and PEQ to channel 1/2. EQ on/off can be selected by EQ flag of register address 0x0F.

The gains for each band can be controlled by writing the gain values (refer Graphic equalizer band gain table in **Appendix B**) to register addresses 0x10~14 respectively.

In PEQ the BQ1 ~ BQ5 can be used as programmable Bi-Quad filters.

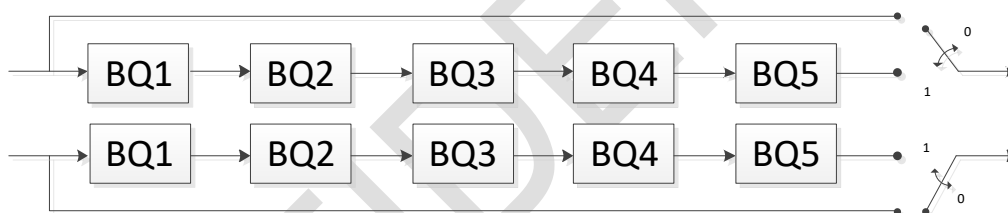


Figure 18. Configurable Graphic Equalizer

### 9.4. Post Bi-Quad Filter Chain

The post Bi-Quad filter chains of NTP8835C can be used in various purposes - bass management, loudness control, parametric EQ, loud-speaker EQ, etc. Independent filter design for channel 1/2 is possible and five 2<sup>nd</sup> order floating point parametric filters are linked serially. Especially for loudness control, as shown in **Figure 19**, last 3 filters are different from first 2 filters.

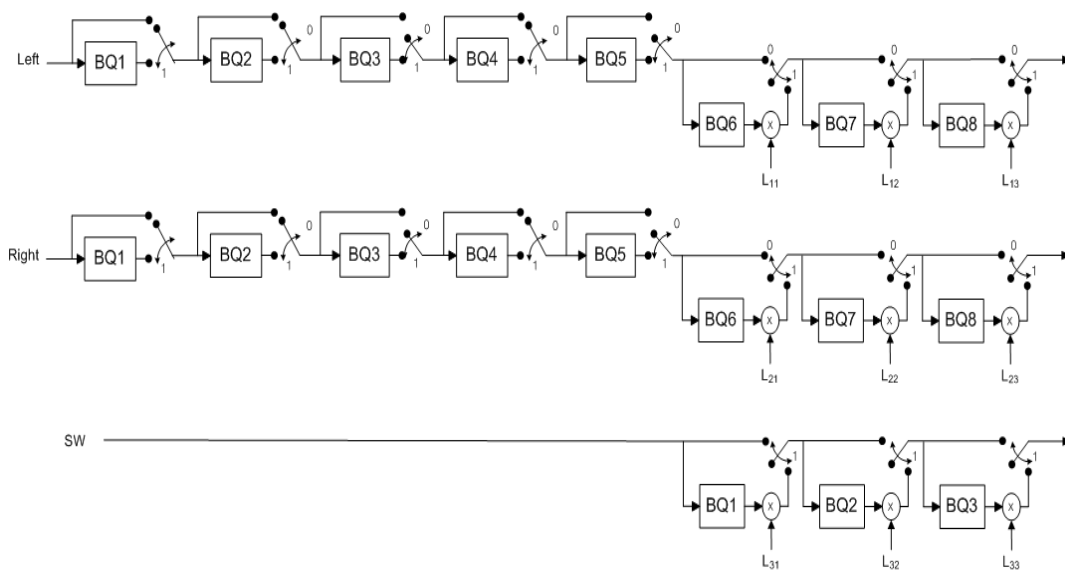


Figure 19. Post Bi-Quad Filter Structure

### 9.5. Loudness Control

The NTP8835C provides loudness control function using post Bi-Quad filter chains. Loudness control means the compensation of frequency characteristics in low volume level to fit the acoustic characteristics of human ears

There are 3 Bi-Quad filters for loudness gain per each channel. To download a loudness gain of each Bi-Quad, the page flag register 0x7E should be set as same in the case of downloading the filter coefficients. The loudness gain values are applied for both channel 1 and 2 and when downloading the loudness gain values, a user should set the register 0x7E as 0x03.

Loudness Gains of CH1/CH2	Coefficient Mode Register Address		
	0x3E	0x3F	0x40
Register Address 0x7E= 0x03 case	L1	L2	L3

Loudness Gains of CH3	Coefficient Mode Register Address		
	0x1E	0x1F	0x20
Register Address 0x7E= 0x04 case	L1	L2	L3

Table 4. Address for Loudness Gain

## 10. VOLUME & DYNAMIC RANGE CONTROL

Master and channel volumes of the NTP8835C are independently controlled and softly changed. The register address 0x2E is the master volume control that affects 3 channels simultaneously and the address 0x2F, 0x30 and 0x31 correspond to the channel volume control register for channel 1, 2 and 3 respectively.

The possible maximum gain is +48.4375dB with using master volume fine control, master volume and channel volume because the master volume applies the gain to an input signal independent from a channel volume. However, in such a case, a clipping might occur to prevent a signal overflow error if the magnitude of the input signal is large enough to exceed 0dB under the combined volume setting.

### 10.1. Master Volume Control

By setting volume control register (Address 0x2E), master volume is controlled from negative infinity through 24dB with selectable step size as follows. For details on the master volume setting, see the register value table shown in **Appendix B**.

Step	Range
0.5 dB	+24 ~ -100 dB
10 dB	-100 ~ -150 dB

**Table 5. Level Dependent Master Volume Steps**

### 10.2. Channel Volume Control

By setting volume control registers (Address 0x2F~0x31), channel volumes are independently controlled from negative infinity through +24dB with two selectable step sizes as described below, and in the **Appendix B**, exact values for channel volume setting are described.

Step	Range
0.5 dB	+24 ~ -100 dB
10 dB	-100 ~ -150 dB

**Table 6. Level Dependent Channel Volume Steps**

### 10.3. Master Volume Fine Control

Fine control for master volume is possible (+0.0625dB step up to maximum +0.4375dB boost). Refer the register address 0x2D in the **Appendix A**.

### 10.4. Mute and Soft Volume Change

The NTP8835C enters mute state by setting soft mute flag of register address 0x26. Soft mute is implemented so that the volume gradually increases or decreases when mute is turned off or on respectively. Also the soft mute speed and soft volume change speed rates are programmable. Designers can minimize the pop noise by controlling the soft mute speed and volume change intervals. Refer SMH flag of register address 0x26 and SVI flag of register address 0x32.

### 10.5. Auto Mute

The NTP8835C can mute the sound automatically when the level of input audio signal is lower than the register-controlled threshold value. The mute can be done PWM switching with 50 % duty ratio in AD mode or with a high pulse duration of MLP width in D-BTL mode.

Auto mute is supported for internal all channels after 2x3 mixer block. Refer register address 0x33 and 0x34.

### 10.6. Dynamic Range Control

Dynamic range control can be turned on or off with programmable compression threshold and attack/release rates. The threshold parameters of DRC can be controlled separately for channel 1/2 and channel 3. For detailed setting, please refer to the register addresses 0x1C~0x25 and refer to the coefficient mode register addresses in Table 7.

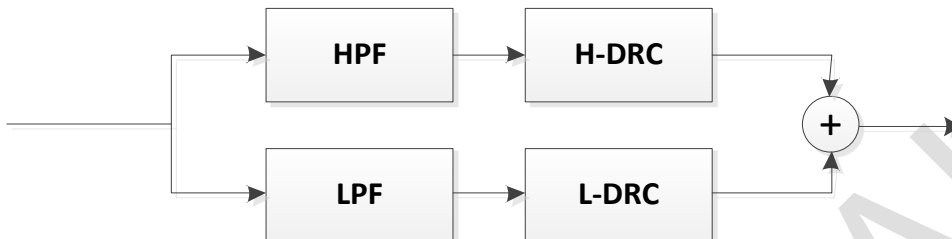


Figure 20. Block Diagram of Dynamic Range Control

2B' DRC Coefficient Mode Register Address	0x46 ~ 0x4A	0x4B ~ 0x4F	0x50 ~ 0x54	0x55 ~ 0x59	0x5A ~ 0x5E	0x5F ~ 0x63
Register Address 0x7E = 0x03	BQ1_Low	BQ2_Low	BQ3_High	BQ4_High	Attack Low	Attack High

0x64	0x65	0x66	0x67	0x68	0x69	0x6A	0x6B
Release Gain Low	Release Gain High	THD Gain Low	THD Gain High	PowerMeter Gain	Attack Gain Low	Attack Gain High	Attack Gain Post

Table 7. DRC Coefficient Mode Register Map for Dynamic Range Control

## 11. OUTPUT INTERFACE

### 11.1. Output Configuration

The output mode of the NTP8835C is 2.0 stereo reproduction mode and 2.1 reproduction mode. To produce proper output signal, register address 0x35~0x37 should be set to appropriate values.

### 11.2. AM Interference Relief Mode

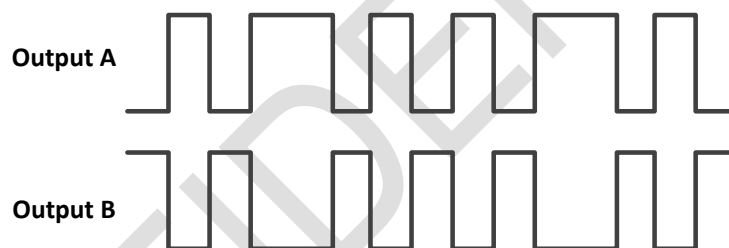
The NTP8835C has AM interference reduction mode. In this mode SNR performance of NTP8835C can be degrade down to 90 dB and the PWM switching frequency is spread from 384kHz through 768kHz.

### 11.3. PWM Output Mapper

Any internal channel that produces a PWM output can be assigned to any PWM output hardware port (or pin) by mapping output port register. This feature is very helpful for the hardware designer because it can relieve difficulties in the power stage signal routing and channel assignment if the output channel order is fixed. See the register address 0x35~0x37 in the **Appendix A**.

### 11.4. Switching Output Mode

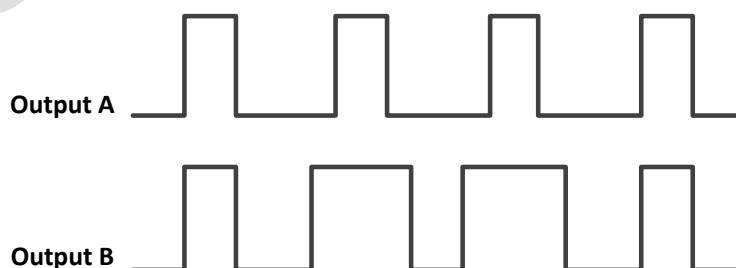
There are two selectable switching output modes in the NTP8835C. The difference between two output modes lies in the relationship of the relative signal pattern between PWM OUTxA and PWM OUTxB for a channel x. The first one is called as AD mode. This AD mode can be applied to both half bridge and full bridge output stage.



**Figure 21. PWM Output Signals in AD Mode**

AD asynchronous pair means the normal AD mode PWM output. In other words, A output and B output of each PWM output pair are mutually complementary. In the case of AD synchronous pair, A output and B output is perfectly identical, and its relation is not complementary. This is useful in some special case including single-ended power stage design.

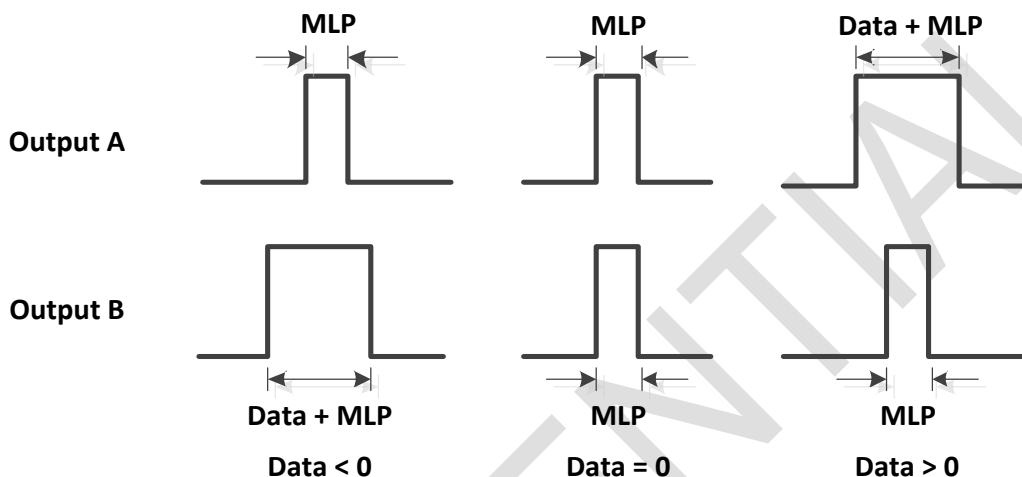
The other one is called as NTX (Neo Trinity Amplification), which is D-BTL mode. This mode is applied only for BTL, and its operation is dynamically-biased BTL, compared to the normal BTL. An example of output signals in D-BTL mode is shown in **Figure 22**.



**Figure 22. PWM Output Signals in D-BTL Mode**



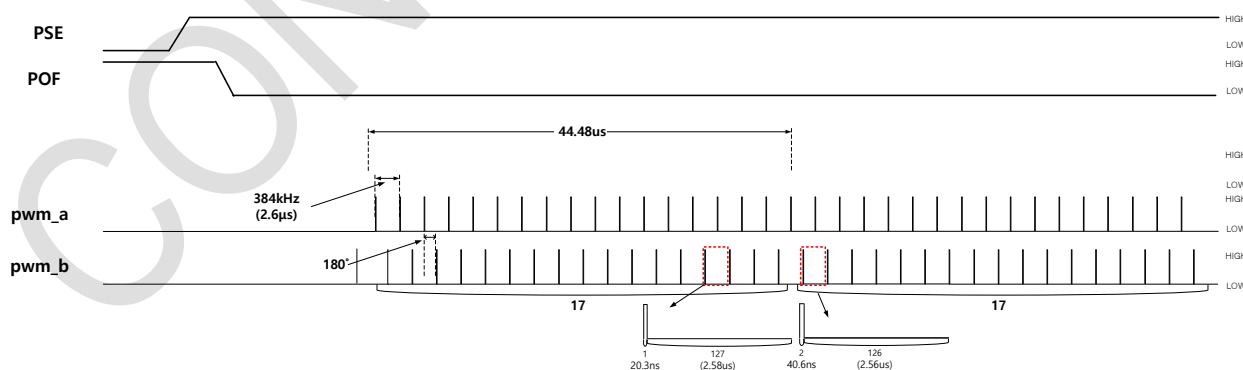
The MLP (Minimum Linear Pulse Length) parameter is an important characteristic in D-BTL mode. MLP defines the minimum pulse length that can guarantee a linear relationship between the input and output pulse length. Generally, the width of the output pulse is proportional to that of the input pulse. However, as the width of input pulse becomes narrower, such linear relation is not maintained due to the characteristic of a power device. The minimum MLP value is preferred as long as linear relationship between the input and the output pulse is satisfied. In addition, in terms of power consumption, a minimal MLP value is preferred. This compensation is illustrated in **Figure 23**.



**Figure 23. Compensation by MLP**

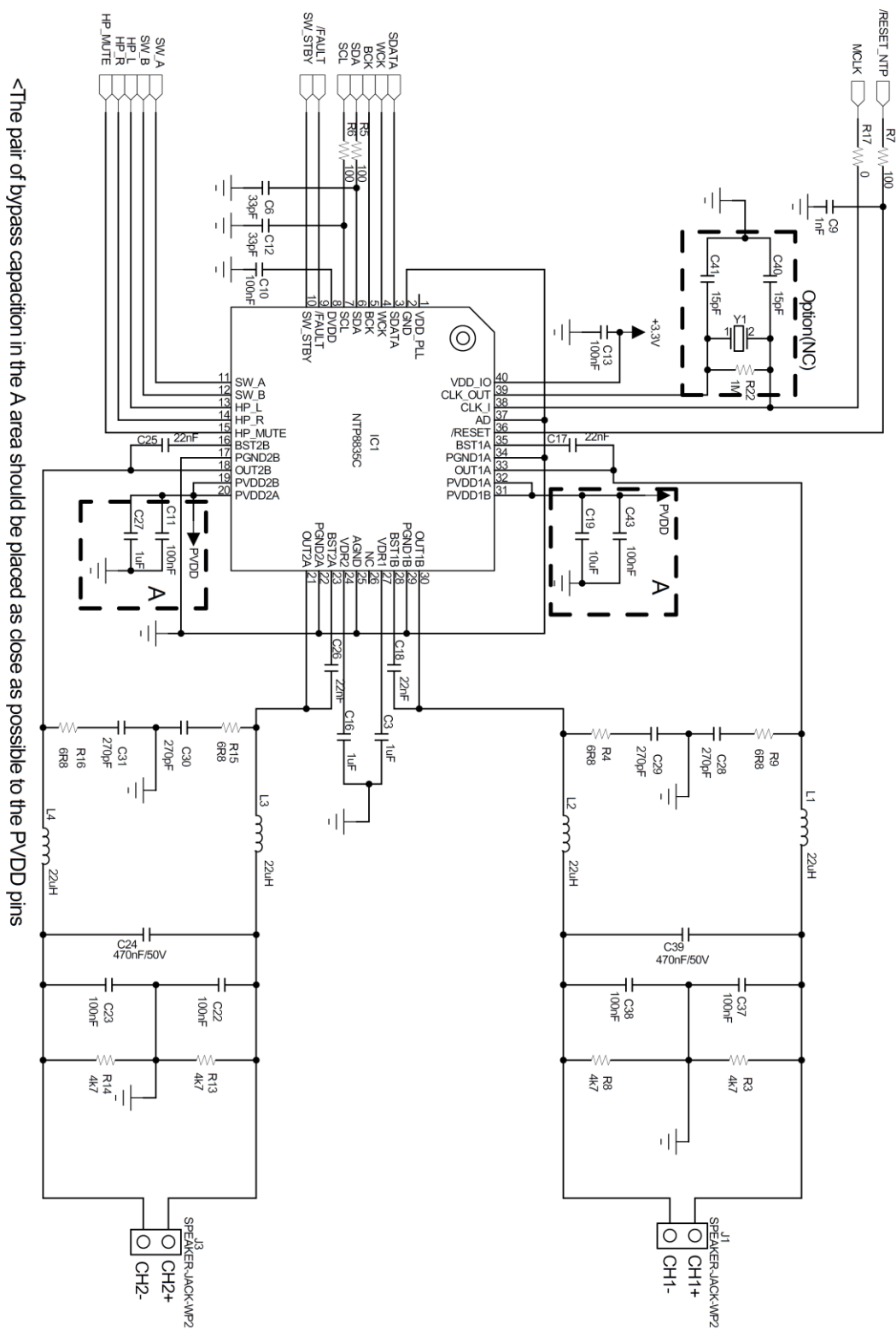
**11.5. Soft Start**

The soft start operation reduces pop noise by controlling rapidly increased energy of PWM. To begin soft start operation, PWM soft start enable register (address 0x52: PSE) should be set to high, and then PWM switching on/off register (address 0x27: POF) should be set to low. The duty ratio of PWM output increases from 127:1 (Low:High) to 50:50 (Low:High). Step repeat time register (address 0x52: SRT) means repeat number of PWM output. Soft start operation with 17 repetitions is shown in the **Figure 24**.



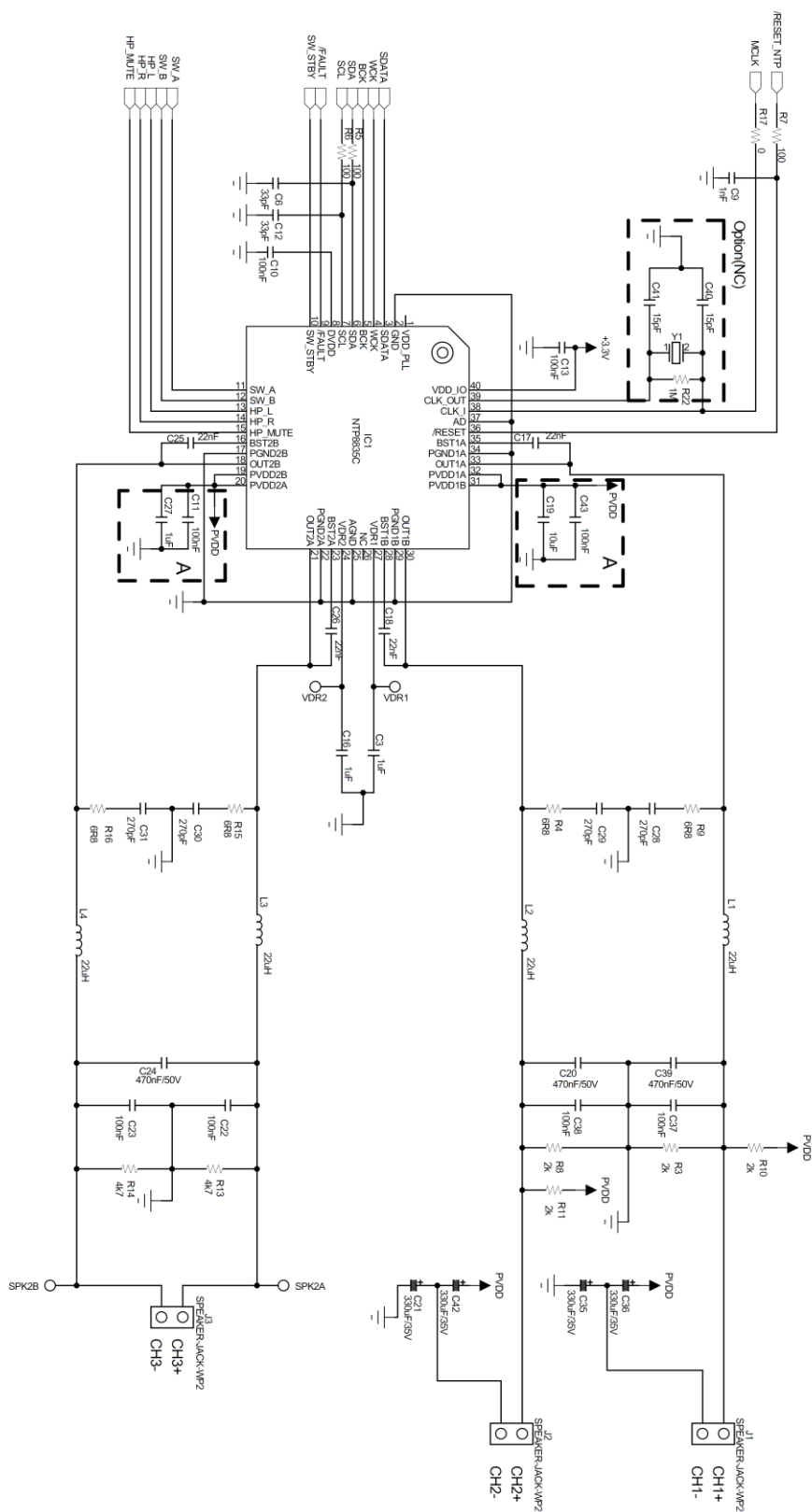
**Figure 24. Soft Start Operation Timing**

### 12.TYPICAL APPLICATION SCHEMATICS (2 Channel)



<The pair of bypass capacitors in the A area should be placed as close as possible to the PVDD pins

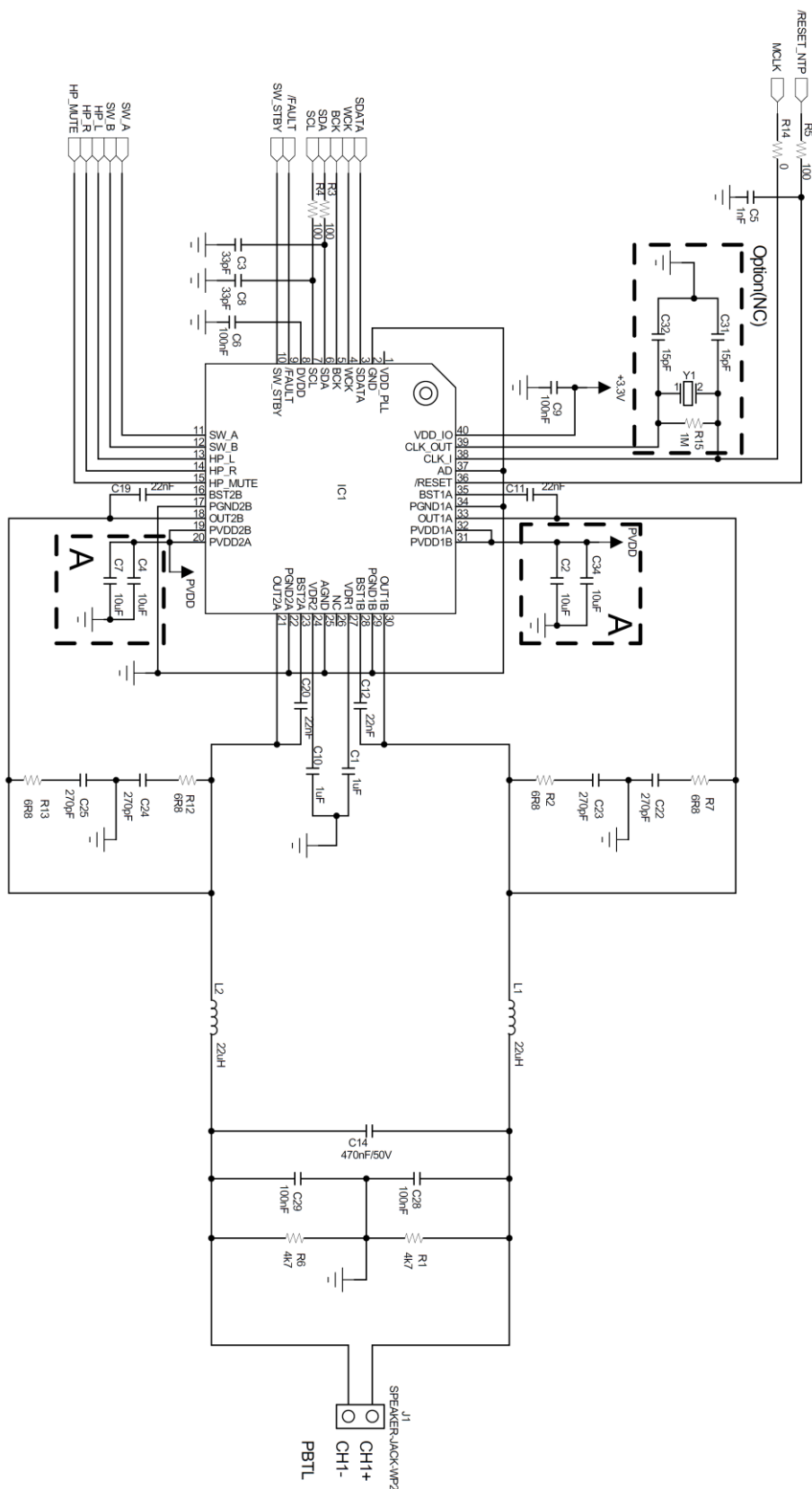
### 13.TYPICAL APPLICATION SCHEMATICS (2.1 Channel)



<The pair of bypass capacitors in the A area should be placed as close as possible to the PVDD pins

### 14. TYPICAL APPLICATION SCHEMATICS (PBTL)

<The pair of bypass capacitors in the A area should be placed as close as possible to the PVDD pins.>



## 15.APPENDIX

### A. Configuration Register Summary

#### Addr 0x00: Audio Input Format

Bit	7	6	5	4	3	2	1	0
Name	X	X	X	FSM			INS	

Name	Description	Value	Meaning	Ref.
INS	Input format	<b>b'00</b>	I <sup>2</sup> S, slave mode	
		b'01	I <sup>2</sup> S, master mode	
		b'10	General serial audio, slave mode	
		b'11	General serial audio, master mode	
FSM	Sampling Frequency in Master mode I <sup>2</sup> S	<b>b'000</b>	48 kHz	
		b'001	8 kHz	
		b'010	16 kHz	
		b'011	32 kHz	
		b'100	12 kHz	
		b'101	24 kHz	
		b'110	96 kHz	
		b'111	192 kHz	

#### Addr 0x01: General Serial Audio Format

Bit	7	6	5	4	3	2	1	0
Name	X	X	BCKS		BS		MLF	LRJ

Name	Description	Value	Meaning	Ref.
LRJ	Serial data justify	<b>b'0</b>	Left justify	
		b'1	Right justify	
MLF	Serial bit order	<b>b'0</b>	MSB first	
		b'1	LSB first	
BS	Serial bit size	<b>b'00</b>	24 bit	
		b'01	20 bit	
		b'10	18 bit	
		b'11	16 bit	
BCKS	Bit clock size select	<b>b'00</b>	64 BCK/WCK	
		b'01	48 BCK/WCK	
		b'10	32 BCK/WCK	

#### Addr 0x02: Master Clock Frequency Control

Bit	7	6	5	4	3	2	1	0
Name	X	X	X	X	X	X	MCF	

Name	Description	Value	Meaning	Ref.
MCF	Master Clock Frequency	<b>b'00</b>	12.288 MHz	
		b'01	24.576 MHz	
		b'10	18.432 MHz	

**Addr 0x03~0x08: Mixer Gain**

Bit	7	6	5	4	3	2	1	0
Name	X	MG						

Name	Description	Value	Meaning	Ref.
MG	Mixer gain	h'00 ~ h'7F	Mixer gain (refer to gain table)	

**Reserved Addr 0x09~0x0B**

**Addr 0x0C: Front Bi-quad Filter Chain (FBQ) Configurations for Ch 1&2&3**

Bit	7	6	5	4	3	2	1	0
Name	X	X	FBQ32	FBQ31	FBQ22	FBQ21	FBQ12	FBQ11

Name	Description	Value	Meaning	Ref.
FBQ11	1st FBQ flag for CH1	b'0	Bypass	
		b'1	Enable	
FBQ12	2nd FBQ flag for CH1	b'0	Bypass	
		b'1	Enable	
FBQ21	1st FBQ flag for CH2	b'0	Bypass	
		b'1	Enable	
FBQ22	2nd FBQ flag for CH2	b'0	Bypass	
		b'1	Enable	
FBQ31	1st FBQ flag for CH3	b'0	Bypass	
		b'1	Enable	
FBQ32	2nd FBQ flag for CH3	b'0	Bypass	
		b'1	Enable	

**Addr 0x0D: 3D Delay Amount**

Bit	7	6	5	4	3	2	1	0
Name	X	X	3D_Delay					

Name	Description	Value	Meaning	Ref.
3D_Delay	3D_Delay	h'01	0 ~ 40 (unsigned decimal)	

**Addr 0x0E: 3D Effect Control Configuration**

Bit	7	6	5	4	3	2	1	0
Name	X	X	X	X	X	X	X	3DEN

Name	Description	Value	Meaning	Ref.
3DEN	3D Bypass Flag	b'0	3D off	
		b'1	3D on	

**Addr 0x0F: Equalizer (EQ) Configuration**

Bit	7	6	5	4	3	2	1	0
Name	X	X	X	X	X	X	EQ	

Name	Description	Value	Meaning	Ref.
EQ	Graphic equalizer configuration	<b>b'00</b>	<b>Bypass</b>	
		b'01	5-band graphic equalizer (GEQ) mode (0x10~0x14 let GEQ choose preset BQ coeffs)	
		b'11	Programmable Graphic Equalizer (PEQ) 5 biquad chain is programmed for application-specific equalizer (refer to 0x7E register to program)	

**Addr 0x10~0x14: GEQ Gain for Band 1 ~ 5**

Bit	7	6	5	4	3	2	1	0
Name	X	X	X	BG				

Name	Description	Value	Meaning	Ref.
BG	Band Gain		See register value table.	

Name	Address	Band	Default	GEQ Default Frequency	Ref.
BG	0x10	BQ1	h'00	100Hz	
	0x11	BQ2	h'00	300Hz	
	0x12	BQ3	h'00	1kHz	
	0x13	BQ4	h'00	3kHz	
	0x14	BQ5	h'00	10kHz	

**Addr 0x15: CH1&CH2 Prescaler Value Configuration**

Bit	7	6	5	4	3	2	1	0
Name	PS							

Name	Description	Value	Meaning	Ref.
PS	Prescaler	h'00 ~ h'FF	208 ( <b>0xD0</b> )default	

**Addr 0x16: CH3 Prescaler Value Configuration**

Bit	7	6	5	4	3	2	1	0
Name	PS							

Name	Description	Value	Meaning	Ref.
PS	Prescaler	h'00 ~ h'FF	208 ( <b>0xD0</b> )default	

**Addr 0x17~0x18: Post Biquad Filter (PBQ) Configuration0 for Ch 1 and Ch2, respectively**

Bit	7	6	5	4	3	2	1	0
Name	X	X	X	BQ5	BQ4	BQ3	BQ2	BQ1

Name	Description	Value	Meaning	Ref.
BQ1	On/off Bi-Quad 1 of ch. n (n= 1,2)	<b>b'0</b>	Bypass Bi-Quad 1 of channel n	
		b'1	Enable Bi-Quad 1 of channel n	
BQ2	On/off Bi-Quad 2 of ch. n (n= 1,2)	<b>b'0</b>	Bypass Bi-Quad 2 of channel n	
		b'1	Enable Bi-Quad 2 of channel n	
BQ3	On/off Bi-Quad 3 of ch. n (n = 1,2)	<b>b'0</b>	Bypass Bi-Quad 3 of channel n	
		b'1	Enable Bi-Quad 3 of channel n	
BQ4	On/off Bi-Quad 4 of ch. n (n = 1,2)	<b>b'0</b>	Bypass Bi-Quad 4 of channel n	
		b'1	Enable Bi-Quad 4 of channel n	
BQ5	On/off Bi-Quad 5 of ch. n (n = 1,2)	<b>b'0</b>	Bypass Bi-Quad 5 of channel n	
		b'1	Enable Bi-Quad 5 of channel n	

**Addr 0x19~0x1A: Post Biquad Filter (PBQ) Configuration1 for Ch 1 and Ch 2, respectively**

Bit	7	6	5	4	3	2	1	0
Name	X	X	BQ8		BQ7		BQ6	

Name	Description	Value	Meaning	Ref.
BQ6	On/off Bi-Quad 6 of ch. n (n = 1,2)	<b>b'00</b>	Bypass Bi-Quad 6 of channel n	
		b'01	Enable Bi-Quad 6 of channel n	
		b'10	Enable Bi-Quad 6 as Loudness Filter	
BQ7	On/off Bi-Quad 7 of ch. n (n = 1,2)	<b>b'00</b>	Bypass Bi-Quad 7 of channel n	
		b'01	Enable Bi-Quad 7 of channel n	
		b'10	Enable Bi-Quad 7 as Loudness Filter	
BQ8	On/off Bi-Quad 8 of ch. n (n = 1,2)	<b>b'00</b>	Bypass Bi-Quad 8 of channel n	
		b'01	Enable Bi-Quad 8 of channel n	
		b'10	Enable Bi-Quad 8 as Loudness Filter	

**Addr 0x1B: Post Biquad Filter (PBQ) Configuration for Ch 3**

Bit	7	6	5	4	3	2	1	0
Name	X	X	BQ3		BQ2		BQ1	

Name	Description	Value	Meaning	Ref.
BQ1	On/off Bi-Quad 1 of ch 3	<b>b'00</b>	Bypass Bi-Quad 1 of channel n	
		b'01	Enable Bi-Quad 1 of channel n	
		b'10	Enable Bi-Quad 1 as Loudness Filter	
BQ2	On/off Bi-Quad 2 of ch 3	<b>b'00</b>	Bypass Bi-Quad 2 of channel n	
		b'01	Enable Bi-Quad 2 of channel n	
		b'10	Enable Bi-Quad 2 as Loudness Filter	
BQ3	On/off Bi-Quad 3 of ch 3	<b>b'00</b>	Bypass Bi-Quad 3 of channel n	
		b'01	Enable Bi-Quad 3 of channel n	
		b'10	Enable Bi-Quad 3 as Loudness Filter	



**Addr 0x1C: DRC Control 0**

Bit	7	6	5	4	3	2	1	0
Name	CPR_L	CTS_L						

Name	Description	Value	Meaning	Ref.
CTS_L	DRC threshold for low band	<b>b'000 0000</b> ~ b'111 1111	-57 ~ 12dB unsigned 7-bit DRC threshold for 1 band mode. In 2 band mode, it will control the threshold of low band. Refer to DRC threshold value table for threshold values.	
CPR_L	DRC enable for low band	<b>b'0</b>	Dynamic Range Compression off	
		<b>b'1</b>	Dynamic Range Compression on	

**Addr 0x1D: DRC Control 1**

Bit	7	6	5	4	3	2	1	0
Name	X	C1C_L			X	A1C_L		

Name	Description	Value	Meaning	Ref.
A1C_L	DRC attack time (low band)	<b>b'000</b> ~ b'111	Attack time control for 1 band mode. In 2 band mode, it will control the attack time of low band. (See attack time table below.) <b>(default = b'001)</b>	
C1C_L	DRC release time (low band)	<b>b'000</b> ~ b'111	Release time control for 1 band mode. In 2 band mode, it will control the release time of low band. (See release time table below.)	

Value of Register	Attack time 6dB, fs = 96,000
011	30 msec
010	15 msec
001	8 msec
000	4 msec
111	2 msec
110	1 msec
101	0.5 msec
100	0.25 msec

**Table 8. DRC Attack Time Table**

Value of Register	Release time 6dB, fs = 96,000
011	5.0 sec
010	2.0 sec
001	1.0 sec
000	0.5 sec
111	0.2 sec
110	0.1 sec
101	0.05sec
100	0.025sec

**Table 9. DRC Release Time Table**

**Addr 0x1E: DRC Control 2**

Bit	7	6	5	4	3	2	1	0
Name	CPR_H	CTS_H						

Name	Description	Value	Meaning	Ref.
CTS_H	DRC threshold for high band	<b>b'000 0000</b> ~ b'111 1111	-57 ~ 12dB unsigned 7-bit DRC threshold for high band. It has effect only in 2 band mode. Refer to DRC threshold value table for threshold values.	
CPR_H	DRC enable for high band	<b>b'0</b>	Dynamic Range Compression off	
		b'1	Dynamic Range Compression on	

**Addr 0x1F: DRC Control3**

Bit	7	6	5	4	3	2	1	0
Name	X	C1C_H			X	A1C_H		

Name	Description	Value	Meaning	Ref.
A1C_H	DRC attack time (high band)	<b>b'000</b> ~ b'111	Attack time control for high band mode. It has effect only in 2 band mode. <b>(default = b'001)</b> (See attack time table in Addr 0x1D.)	
C1C_H	DRC release time (high band)	<b>b'000</b> ~ b'111	Release time control for high band mode. It has effect only in 2 band mode. (See release time table in Addr 0x1D.)	

**Addr 0x20: DRC Control 4**

Bit	7	6	5	4	3	2	1	0
Name	CPR_SW	CTS_SW						

Name	Description	Value	Meaning	Ref.
CTS_SW	DRC threshold	<b>b'000 0000</b> ~b'111 1111	Sub-woofer uses 1-band DRC -57 ~ 12dB unsigned 7-bit DRC threshold When ch1 and ch2 is working in 2band mode, this will be effective.	
CPR_SW	DRC enable for high band	<b>b'0</b>	Dynamic Range Compression off	
		b'1	Dynamic Range Compression on	

**Addr 0x21: DRC Control 5**

Bit	7	6	5	4	3	2	1	0
Name	X	C1C_SW			X	A1C_SW		

Name	Description	Value	Meaning	Ref.
A1C_SW	DRC attack time	b'000 ~ b'111	Attack time control for sub-woofer. (default = <b>b'001</b> ) When ch1 and ch2 is in 2band mode, it will be effective. (See attack time table in Addr 0x1D.)	
C1C_SW	DRC release time	<b>b'000</b> ~ b'111	Release time control for sub-woofer. When ch1 and ch2 is in 2band mode, it will be effective. (See release time table in Addr 0x1D.)	

**Addr 0x22: DRC Control 6**

Bit	7	6	5	4	3	2	1	0
Name	CPR_P	CTS_P						

Name	Description	Value	Meaning	Ref.
CTS_P	DRC threshold for post- band	<b>b'000 0000</b> ~ b'111 1111	-57 ~ 12dB unsigned 7-bit DRC threshold Refer to DRC threshold value table.	
CPR_P	DRC enable for post-band	<b>b'0</b>	Dynamic Range Compression off	
		b'1	Dynamic Range Compression on	

**Addr 0x23: DRC Control 7**

Bit	7	6	5	4	3	2	1	0
Name	X	C1C_P			X	A1C_P		

Name	Description	Value	Meaning	Ref.
A1C_P	DRC attack time (post-DRC)	b'000 ~ b'111	Attack time ( <b>default = b'001</b> )	
C1C_P	DRC release time (post-DRC)	b'000 ~ b'111	Release time ( <b>default = b'100</b> )	

**Addr 0x24: DRC Control 8**

Bit	7	6	5	4	3	2	1	0
Name	X	X	X	DLL				

Name	Description	Value	Meaning	Ref.
DLL	Delay line length	h'00 ~ <b>h'14</b>	Delay line length. 0~20(decimal)	

**Addr 0x25: DRC Control 9**

Bit	7	6	5	4	3	2	1	0
Name	CCO	DTS1	DTS2	2BM	ASB	RSB	TSB	CAS

Name	Description	Value	Meaning	Ref.
CAS	Coupled Allpass Structure enable	b'0	Enable coupled allpass structure	
		b'1	Disable coupled allpass structure	
TSB	Threshold parameter select bit	b'0	Uses Threshold parameters in Table	
		b'1	Uses Threshold parameters from external loading	
RSB	Release parameter select bit	b'0	Uses Release parameters in Table	
		b'1	Uses Release parameters from external loading	
ASB	Attack parameter select bit	b'0	Uses Attack parameters in Table	
		b'1	Uses Attack parameters from external loading	
2BM	2band mode enable	b'0	1 band DRC	
		b'1	2 band DRC	
DTS2	P-DRC type select	b'0	P-DRC new mode	
		b'1	P-DRC old mode	
DTS1	LH-DRC type select	b'0	LH-DRC new mode	
		b'1	LH-DRC old mode	
CCO	Clip control option	b'0	Clip on	
		b'1	Clip off	

※ case. 1band DRC : CAS must be enabled.

**Addr 0x26: Soft Mute Control 0**

Bit	7	6	5	4	3	2	1	0
Name	SMH	X	X	X	X	SM3	SM2	SM1

Name	Description	Value	Meaning	Ref.
SMn	Softmute	b'0	increase for channel n	
		b'1	decrease for channel n	
SMH	Softmute speed	b'0	42/46 msec(at 96/88.2kHz))	
		b'1	Hard change	

**Addr 0x27: PWM Switching On/Off Control**

Bit	7	6	5	4	3	2	1	0
Name	X	X	X	X	X	POF3	POF2	POF1

Name	Description	Value	Meaning	Ref.
POFn	Switching output On/off control	b'0	Channel n PWM switching on	
		b'1	Channel n PWM switching off	

**Addr 0x28: PWM\_MASK Control 0**

Bit	7	6	5	4	3	2	1	0
Name	X	X	X	X	SRD	FPMLD	PWMM	

Name	Description	Value	Meaning	Ref.
PWMM	PWM MASK register	<b>b'10</b>	PWM MASK output is low. (reset default)	
		otherwise	PWM MASK output is high.	
FPMLD	Permanent PWM_MASK Low disable flag	<b>b'0</b>	No effect	
		b'1	Reset the auto_PWM_MASK_restore_counter to 0	
SRD	FAULT disable	<b>b'0</b>	FAULT is effect for PROTECT	
		b'1	FAULT is ineffective for PROTECT	

**Addr 0x29: PWM\_MASK Control 1**

Bit	7	6	5	4	3	2	1	0
Name	X	X	X	X	X	X	APM	POF

Name	Description	Value	Meaning	Ref.
POF	PWM off flag	<b>b'0</b>	Even if Auto PWM_MASK condition is met, the PWM output of all channel is not affected.	
		b'1	When Auto PWM_MASK condition is met, the PWM output of all channel goes to the defined state which is set by the PWM off state control register (Addr 0x2A).	
APM	PWM_MASK flag	<b>b'0</b>	Even if Auto PWM_MASK condition is met, the PWM_MASK output of all channel is not affected.	
		b'1	When Auto PWM_MASK condition is met, the PWM_MASK output goes to Low state.	

**Addr 0x2A: PWM\_MASK Control 2**

Bit	7	6	5	4	3	2	1	0
Name	VMSK3	VMSK2	VMSK1	VMSK0	PMSK3	PMSK2	PMSK1	PMSK0

Name	Description	Value	Meaning	Ref.
PMSK	Masking bit of PWM off control	<b>b'0</b>	Mask bit indicating the validity of n-th bit of Addr 0x5E system register: If the n-th bit of this register is zero, the n-th bit of Addr 0x5E system register is invalid. The n-th bit of Addr 0x5E is valid only when the n-th mask bit is one.	
		b'1		
VMSK	Masking bit of PWM_MASK signal	<b>b'0</b>		
		b'1		

**Addr 0x2B: PWM\_MASK Control 3**

Bit	7	6	5	4	3	2	1	0
Name	IRC		AVRCT			PHT		

Name	Description	Value	Meaning	Ref.
PHT	PWM_MASK Low Hold Time	b'000	0.5 msec Hold Time	
		b'001	1 msec Hold Time	
		b'010	2 msec Hold Time	
		<b>b'011</b>	4 msec Hold Time (Default)	
		b'100	8 msec Hold Time	
		b'101	16msec Hold Time	
AVRCT	Auto PWM_MASK Restore Counter Threshold	b'000	2	
		<b>b'001</b>	5 (Default)	
		b'010	10	
		b'011	15	
		b'100	20	
		b'101	25	
		b'110	30	
IRC	Auto PWM_MASK Restore Interval Ratio Control	<b>b'00</b>	2 (Default)	
		b'01	4	

**Addr 0x2C: PWM\_MASK Control 4**

Bit	7	6	5	4	3	2	1	0
Name	SHE	POE	X	X	X	HT2		

Name	Description	Value	Meaning	Ref.
HT2	Hold Time 2 apply start point (restore counter)	b'000	100 msec Hold Time	
		b'001	200 msec Hold Time	
		b'010	400 msec Hold Time	
		<b>b'011</b>	600 msec Hold Time (Default)	
		b'100	800 msec Hold Time	
		b'101	1 sec Hold Time	
		b'110	2 sec Hold Time	
POE	PWM off when Fault detected and PWM on when PWM_MASK Recover	b'0	Disable	
		<b>b'1</b>	Enable (Default)	
SHE	Second Hold time Enable	<b>b'0</b>	Disable (Default)	
		b'1	Enable	

**Addr 0x2D: Master Volume Fine Control**

Bit	7	6	5	4	3	2	1	0
Name	X	X	X	X	X	MVFC		

Name	Description	Value	Meaning	Ref.
MVFC	Master volume fine control	<b>h'0</b> ~ h'7	0 dB ~ 0.5 dB with 0.0625 dB step	

**Addr 0x2E~0x31: Master Volume, and Ch1/2/3 volume, respectively**

Bit	7	6	5	4	3	2	1	0
Name	VOL							

Name	Description	Value	Meaning	Ref.
VOL	Volume control	h'00 ~ h'FF	See volume control register tables. Reset default is 0 ( <b>0x00</b> ) ( = $-\infty$ dB)for Master and 207 ( <b>0xCF</b> ) for Channel	

**Addr 0x32: Soft Volume Control**

Bit	7	6	5	4	3	2	1	0
Name	X	X	X	X	X	X	SVI	

Name	Description	Value	Meaning	Ref.
SVI	Soft volume change	<b>b'00</b>	Medium speed	
		b'01	High speed	
		b'10	Low speed	
		b'11	soft volume change disable	

**Addr 0x33: Auto-Mute Control for CH1 & CH2**

Bit	7	6	5	4	3	2	1	0
Name	X	EAMC	II		AT			

Name	Description	Value	Meaning	Ref.
AT	Auto-mute detection threshold	<b>b'0000</b> ~ b'1111	Unsigned integer between 0 and 15	
II	Auto-mute response time	<b>b'00</b>	5 msec	
		b'01	50 msec	
		b'10	500 msec	
		b'11	2 sec	
EAMC	Effect of Auto-mute condition	<b>b'0</b>	Auto mute disable(No-Effect)	
		b'1	Continue switching if auto-mute	

**Addr 0x34: Auto-Mute Control for CH3**

Bit	7	6	5	4	3	2	1	0
Name	X	EAMC	II		AT			

Name	Description	Value	Meaning	Ref.
AT	Auto-mute detection threshold	<b>b'0000</b> ~ b'1111	Unsigned integer between 0 and 15	
II	Auto-mute response time	<b>b'00</b>	5 msec	
		b'01	50 msec	
		b'10	500 msec	
		b'11	2 sec	
EAMC	Effect of Auto-mute condition	<b>b'0</b>	Auto mute disable(No-Effect)	
		b'1	Continue switching if auto-mute	

**Reserved Addr 0x35~0x37**

**Addr 0x38: Miscellaneous PWM Control**

Bit	7	6	5	4	3	2	1	0
Name	X	X	X	POL	BHL	AHL	MD	

Name	Description	Value	Meaning	Ref.
MD	PWM output mode	b'00	AD mode with asynchronous signal pair	
		b'01	AD mode with synchronous signal pair	
		b'10	PWM D-BTL MODE (see 0x4E)	
		b'11	AM Interference mode	
AHL	A-out state When switching off	b'0	Low	
		b'1	High	
BHL	B-out state when switching off	b'0	Low	
		b'1	High	
POL	Ch3 polarity Control	b'0	<b>Normal</b>	
		b'1	Inverse	

**Addr 0x39: I<sup>2</sup>C Glitch filter**

Bit	7	6	5	4	3	2	1	0
Name	GFO	DUR						

Name	Description	Value	Meaning	Ref.
DUR	glitch width	b'000 0000 ~ b'111 1111	minimum pulse width = DUR + 20 ns reset default = 15 * 10 ns (DUR default = <b>b'0001111</b> )	
GFO	Glitch filter enable/disable	b'0	Glitch filter on	
		b'1	Bypass	

**Addr 0x3A: Headphone Mute Control**

Bit	7	6	5	4	3	2	1	0
Name	X	X	X	X	X	X	X	HP_MUTE

Name	Description	Value	Meaning	Ref.
HP_MUTE	Use this register to mute external headphone	b'0	Default. External headphone is muted by active low signal	
		b'1	External headphone is muted by active high signal.	

**Reserved Addr 0x3B~0x49**

**Addr 0x4A: SE Soft Start Control 0**

Bit	7	6	5	4	3	2	1	0
Name	X	X	X	X	X	X	X	SSE

Name	Description	Value	Meaning	Ref.
SSE	SE_STE	b'0	SE Soft Start Disable (SE Normal Start)	
		b'1	SE Soft Start Enable	



**Addr 0x4B: SE Soft Start Control 1**

Bit	7	6	5	4	3	2	1	0
Name	X	SSC						

Name	Description	Value	Meaning	Ref.
SSC	SE_CHARGE_TIME	h'00 ~ h'7F	PWM output delay time from point of PWM STBY signal to high. The unit of 1bit is 10ns. (default : <b>0x22</b> )	

**Addr 0x4C: SE Soft Start Control 2**

Bit	7	6	5	4	3	2	1	0
Name	SSR							

Name	Description	Value	Meaning	Ref.
SSR	SE_REAPEAT	h'01 ~ h'FF	The repeat time of se soft start (default: 1 – means repeat 1 times)	

**Addr 0x4D: SE Soft Start Control 3**

Bit	7	6	5	4	3	2	1	0
Name	SPD							

Name	Description	Value	Meaning	Ref.
SPD	SE_PERIOD	h'01 ~ h'7E	Half period of PWM output start point. The unit of 1bit is 10ns. (default : 0x01 – means half period 20ns)	

**Addr 0x4E: PWM D-BTL MODE Control 0**

Bit	7	6	5	4	3	2	1	0
Name	X	MLP						

Name	Description	Value	Meaning	Ref.
MLP	Minimum Linear pulse length	h'08	Range : Minimum Pulse Width ~ 640ns, 20ns step.(refer Addr 0x55 for Minimum Pulse Width)	

**Reserved Addr 0x4F**

**Addr 0x50: PWM D-BTL Mode Control 1**

Bit	7	6	5	4	3	2	1	0	
Name	X							NSS	

Name	Description	Value	Meaning	Ref.
NSS	NS Select	b'00	7bits NS (AD mode)	
		b'01	Reserved	
		b'10	8bits NS	
		b'11	New 8bits NS (D-BTL mode)	

Reserved Addr 0x51

Addr 0x52: PWM Soft Start

Bit	7	6	5	4	3	2	1	0
Name	PSE	SRT						

Name	Description	Value	Meaning	Ref.
SRT	Step Repeat Time	b'000 0000 ~ b'111 1111	The repeat time of each step (default : <b>b'0010000</b> – means repeat 17 times)	
PSE	BTL PWM soft start Enable	b'0	Disable	In Single Ended Mode, should be disabled
		b'1	Enable (Default)	

Addr 0x53: Power Meter Control

Bit	7	6	5	4	3	2	1	0
Name	X	X	X	PDPOS	X	X	PDCH	

Name	Description	Value	Meaning	Ref.
PDCH	Power meter Detect Channel	b'00	L+R (default)	
		b'01	L channel	
		b'10	R channel	
		b'11	reserved	
PDPOS	Power meter Detect Position	b'0	After volume (default)	
		b'1	Before volume	

Addr 0x54: Power Meter (read-only)

Bit	7	6	5	4	3	2	1	0
Name	0	0	0	0	0	0	0	0

Addr 0x55: Modulation Index & NS-Type Control

Bit	7	6	5	4	3	2	1	0
Name	X	M0		NT	MD3		MD12	

Name	Description	Value	Meaning	Ref.
MD12	Modulation index control by Minimum pulse width for Ch 1&2	b'00	Minimum pulse width = 80ns	
		b'01	Minimum pulse width = 60ns	
		b'10	Minimum pulse width = 40ns	
		b'11	Minimum pulse width = 20ns	
MD3	Modulation index control by Minimum pulse width for Ch 3	b'00	Minimum pulse width = 80ns	
		b'01	Minimum pulse width = 60ns	
		b'10	Minimum pulse width = 40ns	
		b'11	Minimum pulse width = 20ns	
NT	Noise shaping Type for Ch 1&2	b'0	Type 1 (fourth order)	
		b'1	Type 2 (fifth order)	
M0	Dither Position Selector	b'00	No left shift on dither value = Dither off	
		b'01	1bit left shift on dither value	
		b'10	2bit left shift on dither value	
		b'11	3bit left shift on dither value	

**Addr 0x56: ASRC Control 0**

Bit	7	6	5	4	3	2	1	0
Name	X	X	DCESW	X	FSFHM	FSFSM	X	BYPASS

Name	Description	Value	Meaning	Ref.
BYPASS	Bypass	b'0	Normal operation	
		b'1	Bypass	
FSFSM	frequency stable effect on soft mute flag	b'0	no effect on soft mute flag	
		b'1	soft mute flag = 1 when unstable state	
FSFHM	frequency stable effect on hard mute flag	b'0	no effect on hard mute flag	
		b'1	hard mute flag = 1 when unstable state	
DCESW	DC Check Enable of SRC WCK	b'0	DC Check Disable in SRC WCK	
		b'1	DC Check Enable in SRC WCK	

**Reserved Addr 0x57~0x5D**

**Addr 0x5E: System Error Status (read-only)**

Bit	7	6	5	4	3	2	1	0
Name	FSI				MPW	LSRC	ULCK	PPM

Name	Description	Value	Meaning	Ref.
PPM	Permanent PWM_MASK Indication flag	b'0		
		b'1	Indicated that PWM_MASK is in Permanent LOW state	
ULCK	Sampled PLL Unlock error	b'0	PLL is locked state.	
		b'1	PLL is unlocked state.	
LSRC	SRC lock status	b'0	SRC is unlocked state.	
		b'1	SRC is locked state	
MPW	MCK/WCK Ratio error	b'0	Ratio is incorrect.	
		b'1	Ratio is correct.	
FSI	Sampling Frequency Information	b'0000	8 kHz	
		b'0001	11.025 KHz	
		b'0010	12 kHz	
		b'0011	16 kHz	
		b'0100	22.025kHz	
		b'0101	24 kHz	
		b'0110	32 kHz	
		b'0111	44.1 kHz	
		b'1000	48 kHz	
		b'1001	88.2 kHz	
		b'1010	96 kHz	
b'1011	192 kHz			

**Addr 0x5F: Monitor**

Bit	7	6	5	4	3	2	1	0
Name	Monitor 1				Monitor 0			

Name	Description	Value	Meaning	Ref.
Monitor 0	This output doesn't come through Power Device.	b'0000	Reserved	In default, monitor 0/1 pin can be connected to woofer
		b'0001	Pwm1a=> Monitor 0 pin	
		b'0010	Pwm1b => Monitor 0 pin	
		b'0011	pwm2a => Monitor 0 pin	
		b'0100	Pwm2b => Monitor 0 pin	
		<b>b'0101</b>	<b>Pwm3a =&gt; Monitor 0 pin</b>	
		b'0110	Pwm3b => Monitor 0 pin	
		b'0111	Reserved	
		b'1000	SDATA_OUT => Monitor 0 pin	
Monitor 1	This output doesn't come through Power Device.	b'0000	Reserved	
		b'0001	Pwm1a=> Monitor 1 pin	
		b'0010	Pwm1b => Monitor 1 pin	
		b'0011	pwm2a => Monitor 1 pin	
		b'0100	Pwm2b => Monitor 1 pin	
		b'0101	Pwm3a => Monitor 1 pin	
		<b>b'0110</b>	<b>Pwm3b =&gt; Monitor 1 pin</b>	
		b'0111	Reserved	
		b'1000	SDATA_OUT => Monitor 1 pin	

**Addr 0x61: I2S Glitch Filter**

Bit	7	6	5	4	3	2	1	0
Name	GFE	WTH						

Name	Description	Value	Meaning	Ref.
WTH	glitch width	b'0000000	minimum pulse width = DUR + 20 ns reset default = 1 * 10 ns (DUR default = <b>b'0000001</b> )	
		~ b'1111111		
GFE	Glitch filter enable/disable	<b>b'0</b>	Glitch filter on	
		b'1	Bypass	

**Addr 0x62: Driver Control**

Bit	7	6	5	4	3	2	1	0
Name	X	X	X	SB	PM		STBY_SEL	SHDN

Name	Description	Value	Meaning	Ref.
SHDN	Shutdown	<b>b'0</b>	SHDN pin go to high	
		b'1	SHDN pin go to low	
STBY_SEL	STBY signal output mode	<b>b'0</b>	STBY : SB & PWM_MASK	
		b'1	STBY : SB	
PM	PWM Mode	b'00	Normal Operation	
		b'01	1 chip 2.1 channel mode (Single Ended Mode) cf) Should be disable 0x52 PSE	
		<b>b'10</b>	<b>1 chip 2.0 channel mode or 2.1 channel with external power stage (BTL Mode)</b> cf) Should be disable 0x4A SSE	
SB	Stand-by in 2 channel mode	<b>b'0</b>	<b>Power Device: Stand-by operation</b>	
		b'1	Power Device: Normal operation	

**Reserved Addr 0x63~0x65**

**Addr 0x66: Power-Die Status (Read-Only)**

Bit	7	6	5	4	3	2	1	0
Name	X	X	X	X	X	X	PDS	

Name	Description	Value	Meaning	Ref.
PDS	Power-Die Status	<b>b'00</b>	Normal State	
		b'01	Temperature Protection Error	
		b'10	Voltage Protection Error	
		b'11	Current Protection Error	

**Reserved Addr 0x67~0x7D**

**Addr 0x7E: Bi-Quad Filter Coefficient Page**

Bit	7	6	5	4	3	2	1	0
Name	X	X	X	X	PEQ	CH3	CH2	CH1

Name	Description	Value	Meaning	Ref.
CH1	Coefficient write enable	<b>b'0</b>	Disable coefficient write for ch1	
		b'1	Enable coefficient write for ch1	
CH2	Coefficient write enable	<b>b'0</b>	Disable coefficient write for ch2	
		b'1	Enable coefficient write for ch2	
CH3	Coefficient write enable	<b>b'0</b>	Disable coefficient write for ch3	
		b'1	Enable coefficient write for ch3	
PEQ	Coefficient write enable	<b>b'0</b>	Disable coefficient write for PEQ	
		b'1	Enable coefficient write for PEQ	

Ref) In convenience, a device programmer can write same biquad filter coefficients for CH1 and CH2 at a single time by setting Reg 0x7E as "x03".

**B. Configuration Register Value Reference**

**Master & Channel Volume**

Index	dB	Index	dB	Index	dB	Index	dB	Index	dB	Index	dB
FF	24	D4	2.5	A9	-19	7E	-40.5	53	-62	28	-83.5
FE	23.5	D3	2	A8	-19.5	7D	-41	52	-62.5	27	-84
FD	23	D2	1.5	A7	-20	7C	-41.5	51	-63	26	-84.5
FC	22.5	D1	1	A6	-20.5	7B	-42	50	-63.5	25	-85
FB	22	D0	0.5	A5	-21	7A	-42.5	4F	-64	24	-85.5
FA	21.5	CF	0	A4	-21.5	79	-43	4E	-64.5	23	-86
F9	21	CE	-0.5	A3	-22	78	-43.5	4D	-65	22	-86.5
F8	20.5	CD	-1	A2	-22.5	77	-44	4C	-65.5	21	-87
F7	20	CC	-1.5	A1	-23	76	-44.5	4B	-66	20	-87.5
F6	19.5	CB	-2	A0	-23.5	75	-45	4A	-66.5	1F	-88
F5	19	CA	-2.5	9F	-24	74	-45.5	49	-67	1E	-88.5
F4	18.5	C9	-3	9E	-24.5	73	-46	48	-67.5	1D	-89
F3	18	C8	-3.5	9D	-25	72	-46.5	47	-68	1C	-89.5
F2	17.5	C7	-4	9C	-25.5	71	-47	46	-68.5	1B	-90
F1	17	C6	-4.5	9B	-26	70	-47.5	45	-69	1A	-90.5
F0	16.5	C5	-5	9A	-26.5	6F	-48	44	-69.5	19	-91
EF	16	C4	-5.5	99	-27	6E	-48.5	43	-70	18	-91.5
EE	15.5	C3	-6	98	-27.5	6D	-49	42	-70.5	17	-92
ED	15	C2	-6.5	97	-28	6C	-49.5	41	-71	16	-92.5
EC	14.5	C1	-7	96	-28.5	6B	-50	40	-71.5	15	-93
EB	14	C0	-7.5	95	-29	6A	-50.5	3F	-72	14	-93.5
EA	13.5	BF	-8	94	-29.5	69	-51	3E	-72.5	13	-94
E9	13	BE	-8.5	93	-30	68	-51.5	3D	-73	12	-94.5
E8	12.5	BD	-9	92	-30.5	67	-52	3C	-73.5	11	-95
E7	12	BC	-9.5	91	-31	66	-52.5	3B	-74	10	-95.5
E6	11.5	BB	-10	90	-31.5	65	-53	3A	-74.5	0F	-96
E5	11	BA	-10.5	8F	-32	64	-53.5	39	-75	0E	-96.5
E4	10.5	B9	-11	8E	-32.5	63	-54	38	-75.5	0D	-97
E3	10	B8	-11.5	8D	-33	62	-54.5	37	-76	0C	-97.5
E2	9.5	B7	-12	8C	-33.5	61	-55	36	-76.5	0B	-98
E1	9	B6	-12.5	8B	-34	60	-55.5	35	-77	0A	-98.5
E0	8.5	B5	-13	8A	-34.5	5F	-56	34	-77.5	9	-99
DF	8	B4	-13.5	89	-35	5E	-56.5	33	-78	8	-99.5
DE	7.5	B3	-14	88	-35.5	5D	-57	32	-78.5	7	-100
DD	7	B2	-14.5	87	-36	5C	-57.5	31	-79	6	-110
DC	6.5	B1	-15	86	-36.5	5B	-58	30	-79.5	5	-120
DB	6	B0	-15.5	85	-37	5A	-58.5	2F	-80	4	-130
DA	5.5	AF	-16	84	-37.5	59	-59	2E	-80.5	3	-140
D9	5	AE	-16.5	83	-38	58	-59.5	2D	-81	2	-150
D8	4.5	AD	-17	82	-38.5	57	-60	2C	-81.5	1	-150
D7	4	AC	-17.5	81	-39	56	-60.5	2B	-82	0	-150
D6	3.5	AB	-18	80	-39.5	55	-61	2A	-82.5		
D5	3	AA	-18.5	7F	-40	54	-61.5	29	-83		

Mixer Gain & Polarity

Index	Polarity	dB	Index	Polarity	dB	Index	Polarity	dB	Index	Polarity	dB
7E	+	18	7D	-	18	3E	+	-4	3D	-	-4
7C	+	17	7B	-	17	3C	+	-4.5	3B	-	-4.5
7A	+	16	79	-	16	3A	+	-5	39	-	-5
78	+	15	77	-	15	38	+	-5.5	37	-	-5.5
76	+	14	75	-	14	36	+	-6	35	-	-6
74	+	13	73	-	13	34	+	-7	33	-	-7
72	+	12	71	-	12	32	+	-8	31	-	-8
70	+	11	6F	-	11	30	+	-9	2F	-	-9
6E	+	10	6D	-	10	2E	+	-10	2D	-	-10
6C	+	9	6B	-	9	2C	+	-11	2B	-	-11
6A	+	8	69	-	8	2A	+	-12	29	-	-12
68	+	7	67	-	7	28	+	-13	27	-	-13
66	+	6	65	-	6	26	+	-14	25	-	-14
64	+	5.5	63	-	5.5	24	+	-15	23	-	-15
62	+	5	61	-	5	22	+	-16	21	-	-16
60	+	4.5	5F	-	4.5	20	+	-17	1F	-	-17
5E	+	4	5D	-	4	1E	+	-18	1D	-	-18
5C	+	3.5	5B	-	3.5	1C	+	-19	1B	-	-19
5A	+	3	59	-	3	1A	+	-20	19	-	-20
58	+	2.5	57	-	2.5	18	+	-21	17	-	-21
56	+	2	55	-	2	16	+	-22	15	-	-22
54	+	1.5	53	-	1.5	14	+	-23	13	-	-23
52	+	1	51	-	1	12	+	-24	11	-	-24
50	+	0.5	4F	-	0.5	10	+	-25	0F	-	-25
4E	+	0	4D	-	0	0E	+	-26	0D	-	-26
4C	+	-0.5	4B	-	-0.5	0C	+	-27	0B	-	-27
4A	+	-1	49	-	-1	0A	+	-28	09	-	-28
48	+	-1.5	47	-	-1.5	08	+	-29	07	-	-29
46	+	-2	45	-	-2	06	+	-30	05	-	-30
44	+	-2.5	43	-	-2.5	04	+	-31	03	-	-31
42	+	-3	41	-	-3	02	+	-32	01	-	-32
40	+	-3.5	3F	-	-3.5	00	+	-150			

Dynamic Range Control Threshold

dB	Value	dB	Value	dB	Value	dB	Value
-57	FF	-5.5	DF	-2.3	BF	0.9	9F
-54	FE	-5.4	DE	-2.2	BE	1	9E
-51	FD	-5.3	DD	-2.1	BD	1.25	9D
-48	FC	-5.2	DC	-2	BC	1.5	9C
-45	FB	-5.1	DB	-1.9	BB	1.75	9B
-42	FA	-5	DA	-1.8	BA	2	9A
-39	F9	-4.9	D9	-1.7	B9	2.25	99
-36	F8	-4.8	D8	-1.6	B8	2.5	98
-33	F7	-4.7	D7	-1.5	B7	2.75	97
-30	F6	-4.6	D6	-1.4	B6	3	96
-27	F5	-4.5	D5	-1.3	B5	3.25	95
-24	F4	-4.4	D4	-1.2	B4	3.5	94
-21	F3	-4.3	D3	-1.1	B3	3.75	93
-18	F2	-4.2	D2	-1	B2	4	92
-15	F1	-4.1	D1	-0.9	B1	4.25	91
-12	F0	-4	D0	-0.8	B0	4.5	90
-11.5	EF	-3.9	CF	-0.7	AF	4.75	8F
-11	EE	-3.8	CE	-0.6	AE	5	8E
-10.5	ED	-3.7	CD	-0.5	AD	5.5	8D
-10	EC	-3.6	CC	-0.4	AC	6	8C
-9.5	EB	-3.5	CB	-0.3	AB	6.5	8B
-9	EA	-3.4	CA	-0.2	AA	7	8A
-8.5	E9	-3.3	C9	-0.1	A9	7.5	89
-8	E8	-3.2	C8	0	A8	8	88
-7.5	E7	-3.1	C7	0.1	A7	8.5	87
-7	E6	-3	C6	0.2	A6	9	86
-6.5	E5	-2.9	C5	0.3	A5	9.5	85
-6	E4	-2.8	C4	0.4	A4	10	84
-5.9	E3	-2.7	C3	0.5	A3	10.5	83
-5.8	E2	-2.6	C2	0.6	A2	11	82
-5.7	E1	-2.5	C1	0.7	A1	11.5	81
-5.6	E0	-2.4	C0	0.8	A0	12	80

※ CPR bit = 1



Auto Mute Detection Threshold Table

Name	Description	Value	dB
AT	Auto-mute Detection threshold	0000	-126
		0001	-120
		0010	-114
		0011	-108
		0100	-102
		0101	-96
		0110	-90
		0111	-84
		1000	-78
		1001	-72
		1010	-66
		1011	-60
		1100	-54
		1101	-48
		1110	-42
		<b>1111</b>	<b>Auto-mute</b>

※ Do not use value 1111.

Graphic Equalizer Band Gain

Value(HEX)	dB
14	-12
15	-11
16	-10
17	-9
18	-8
19	-7
1A	-6
1B	-5
1C	-4
1D	-3
1E	-2
1F	-1
00	0
01	1
02	2
03	3
04	4
05	5
06	6
07	7
08	8
09	9
0A	10
0B	11
0C	12

Power Meter Reading Table

addr 0x54	addr 0x54	dB	addr 0x54	addr 0x54	dB	addr 0x54	addr 0x54	dB	addr 0x54	addr 0x54	dB
0	0x00	-0.0	64	0x40	-32.0	128	0x80	-64.0	192	0xC0	-96.0
1	0x01	-0.5	65	0x41	-32.5	129	0x81	-64.5	193	0xC1	-96.5
2	0x02	-1.0	66	0x42	-33.0	130	0x82	-65.0	194	0xC2	-97.0
3	0x03	-1.5	67	0x43	-33.5	131	0x83	-65.5	195	0xC3	-97.5
4	0x04	-2.0	68	0x44	-34.0	132	0x84	-66.0	196	0xC4	-98.0
5	0x05	-2.5	69	0x45	-34.5	133	0x85	-66.5	197	0xC5	-98.5
6	0x06	-3.0	70	0x46	-35.0	134	0x86	-67.0	198	0xC6	-99.0
7	0x07	-3.5	71	0x47	-35.5	135	0x87	-67.5	199	0xC7	-99.5
8	0x08	-4.0	72	0x48	-36.0	136	0x88	-68.0	200	0xC8	-100.0
9	0x09	-4.5	73	0x49	-36.5	137	0x89	-68.5	201	0xC9	-100.5
10	0x0A	-5.0	74	0x4A	-37.0	138	0x8A	-69.0	202	0xCA	-101.0
11	0x0B	-5.5	75	0x4B	-37.5	139	0x8B	-69.5	203	0xCB	-101.5
12	0x0C	-6.0	76	0x4C	-38.0	140	0x8C	-70.0	204	0xCC	-102.0
13	0x0D	-6.5	77	0x4D	-38.5	141	0x8D	-70.5	205	0xCD	-102.5
14	0x0E	-7.0	78	0x4E	-39.0	142	0x8E	-71.0	206	0xCE	-103.0
15	0x0F	-7.5	79	0x4F	-39.5	143	0x8F	-71.5	207	0xCF	-103.5
16	0x10	-8.0	80	0x50	-40.0	144	0x90	-72.0	208	0xD0	-104.0
17	0x11	-8.5	81	0x51	-40.5	145	0x91	-72.5	209	0xD1	-104.5
18	0x12	-9.0	82	0x52	-41.0	146	0x92	-73.0	210	0xD2	-105.0
19	0x13	-9.5	83	0x53	-41.5	147	0x93	-73.5	211	0xD3	-105.5
20	0x14	-10.0	84	0x54	-42.0	148	0x94	-74.0	212	0xD4	-106.0
21	0x15	-10.5	85	0x55	-42.5	149	0x95	-74.5	213	0xD5	-106.5
22	0x16	-11.0	86	0x56	-43.0	150	0x96	-75.0	214	0xD6	-107.0
23	0x17	-11.5	87	0x57	-43.5	151	0x97	-75.5	215	0xD7	-107.5
24	0x18	-12.0	88	0x58	-44.0	152	0x98	-76.0	216	0xD8	-108.0
25	0x19	-12.5	89	0x59	-44.5	153	0x99	-76.5	217	0xD9	-108.5
26	0x1A	-13.0	90	0x5A	-45.0	154	0x9A	-77.0	218	0xDA	-109.0
27	0x1B	-13.5	91	0x5B	-45.5	155	0x9B	-77.5	219	0xDB	-109.5
28	0x1C	-14.0	92	0x5C	-46.0	156	0x9C	-78.0	220	0xDC	-110.0
29	0x1D	-14.5	93	0x5D	-46.5	157	0x9D	-78.5	221	0xDD	-110.5
30	0x1E	-15.0	94	0x5E	-47.0	158	0x9E	-79.0	222	0xDE	-111.0
31	0x1F	-15.5	95	0x5F	-47.5	159	0x9F	-79.5	223	0xDF	-111.5
32	0x20	-16.0	96	0x60	-48.0	160	0xA0	-80.0	224	0xE0	-112.0
33	0x21	-16.5	97	0x61	-48.5	161	0xA1	-80.5	225	0xE1	-112.5
34	0x22	-17.0	98	0x62	-49.0	162	0xA2	-81.0	226	0xE2	-113.0
35	0x23	-17.5	99	0x63	-49.5	163	0xA3	-81.5	227	0xE3	-113.5
36	0x24	-18.0	100	0x64	-50.0	164	0xA4	-82.0	228	0xE4	-114.0
37	0x25	-18.5	101	0x65	-50.5	165	0xA5	-82.5	229	0xE5	-114.5
38	0x26	-19.0	102	0x66	-51.0	166	0xA6	-83.0	230	0xE6	-115.0
39	0x27	-19.5	103	0x67	-51.5	167	0xA7	-83.5	231	0xE7	-115.5
40	0x28	-20.0	104	0x68	-52.0	168	0xA8	-84.0	232	0xE8	-116.0
41	0x29	-20.5	105	0x69	-52.5	169	0xA9	-84.5	233	0xE9	-116.5
42	0x2A	-21.0	106	0x6A	-53.0	170	0xAA	-85.0	234	0xEA	-117.0
43	0x2B	-21.5	107	0x6B	-53.5	171	0xAB	-85.5	235	0xEB	-117.5
44	0x2C	-22.0	108	0x6C	-54.0	172	0xAC	-86.0	236	0xEC	-118.0
45	0x2D	-22.5	109	0x6D	-54.5	173	0xAD	-86.5	237	0xED	-118.5
46	0x2E	-23.0	110	0x6E	-55.0	174	0xAE	-87.0	238	0xEE	-119.0
47	0x2F	-23.5	111	0x6F	-55.5	175	0xAF	-87.5	239	0xEF	-119.5
48	0x30	-24.0	112	0x70	-56.0	176	0xB0	-88.0	240	0xF0	-120.0
49	0x31	-24.5	113	0x71	-56.5	177	0xB1	-88.5	241	0xF1	-120.5
50	0x32	-25.0	114	0x72	-57.0	178	0xB2	-89.0	242	0xF2	-121.0
51	0x33	-25.5	115	0x73	-57.5	179	0xB3	-89.5	243	0xF3	-121.5
52	0x34	-26.0	116	0x74	-58.0	180	0xB4	-90.0	244	0xF4	-122.0
53	0x35	-26.5	117	0x75	-58.5	181	0xB5	-90.5	245	0xF5	-122.5
54	0x36	-27.0	118	0x76	-59.0	182	0xB6	-91.0	246	0xF6	-123.0
55	0x37	-27.5	119	0x77	-59.5	183	0xB7	-91.5	247	0xF7	-123.5
56	0x38	-28.0	120	0x78	-60.0	184	0xB8	-92.0	248	0xF8	-124.0
57	0x39	-28.5	121	0x79	-60.5	185	0xB9	-92.5	249	0xF9	-124.5
58	0x3A	-29.0	122	0x7A	-61.0	186	0xBA	-93.0	250	0xFA	-125.0
59	0x3B	-29.5	123	0x7B	-61.5	187	0xBB	-93.5	251	0xFB	-125.5
60	0x3C	-30.0	124	0x7C	-62.0	188	0xBC	-94.0	252	0xFC	-126.0
61	0x3D	-30.5	125	0x7D	-62.5	189	0xBD	-94.5	253	0xFD	-126.5
62	0x3E	-31.0	126	0x7E	-63.0	190	0xBE	-95.0	254	0xFE	-127.0
63	0x3F	-31.5	127	0x7F	-63.5	191	0xBF	-95.5	255	0xFF	-127.5

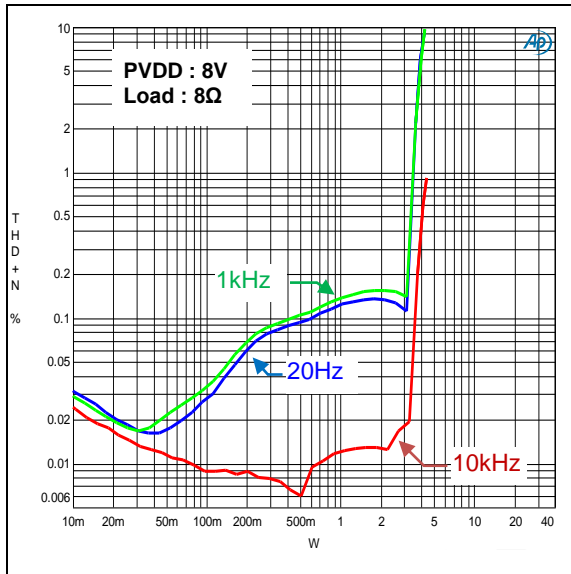
※ Output 8bit value :  $(-dB * 2) n dB = output\ 8bit * 0.5$

**C. Typical Characteristics Graph**

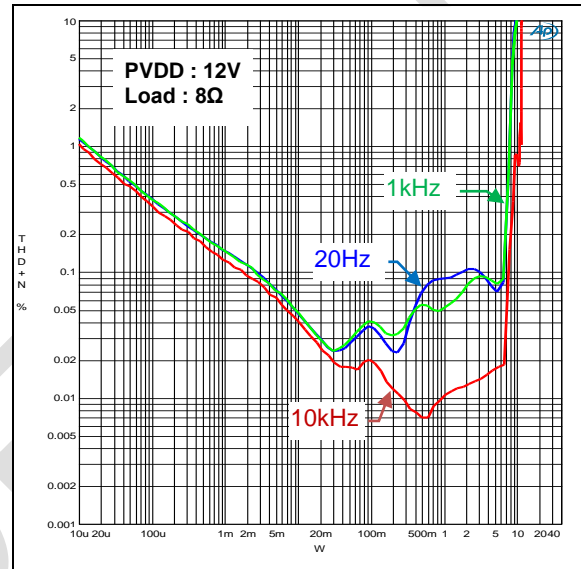
**Total Harmonic Distortion + Noise vs. Power, BTL D-BTL Mode Configuration, 8Ω**

※ Condition : 2Layer Board

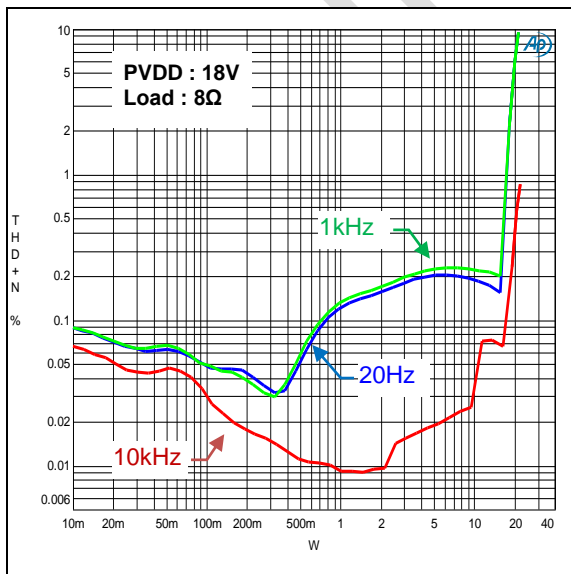
**THD+N vs. Power**



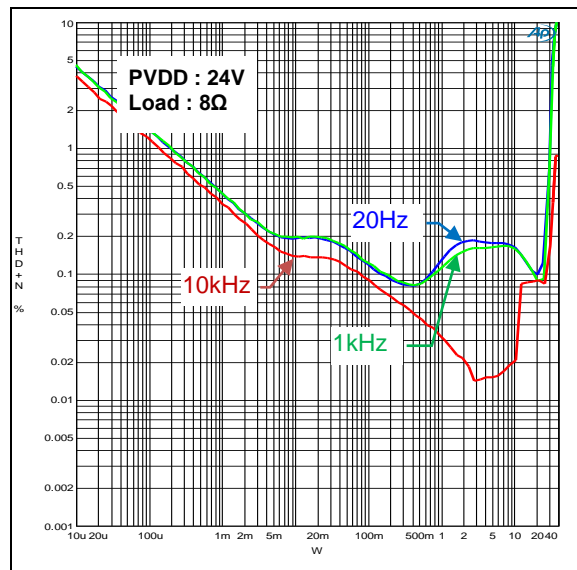
**THD+N vs. Power**



**THD+N vs. Power**

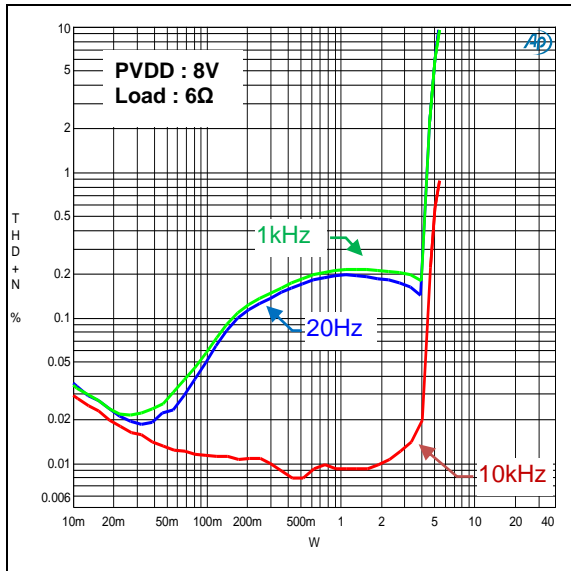


**THD+N vs. Power**

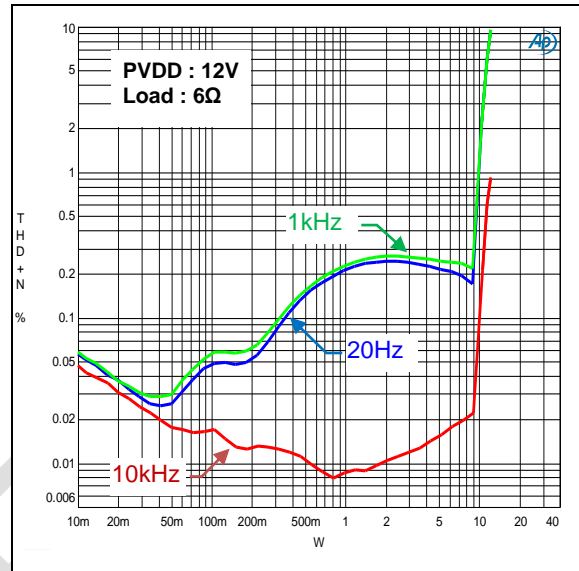


Total Harmonic Distortion + Noise vs. Power, BTL D-BTL Mode Configuration, 6Ω

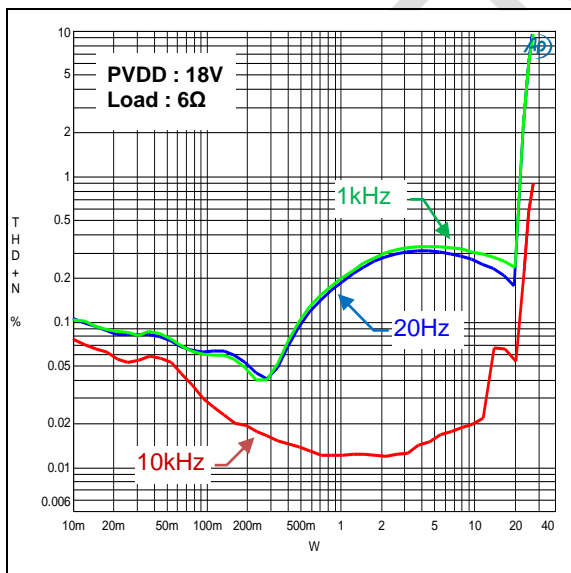
THD+N vs. Power



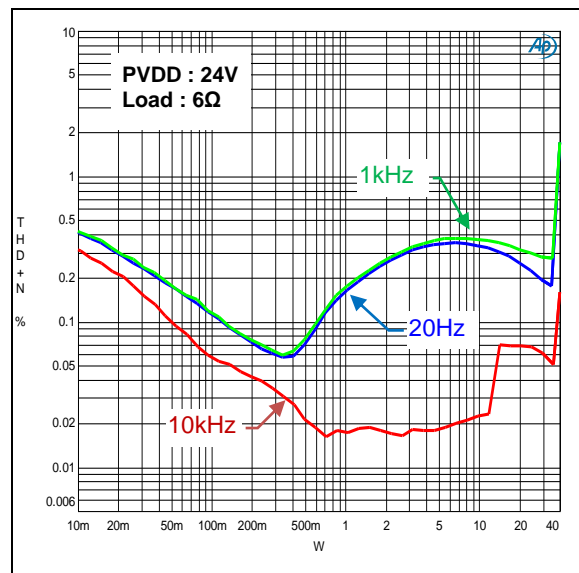
THD+N vs. Power



THD+N vs. Power

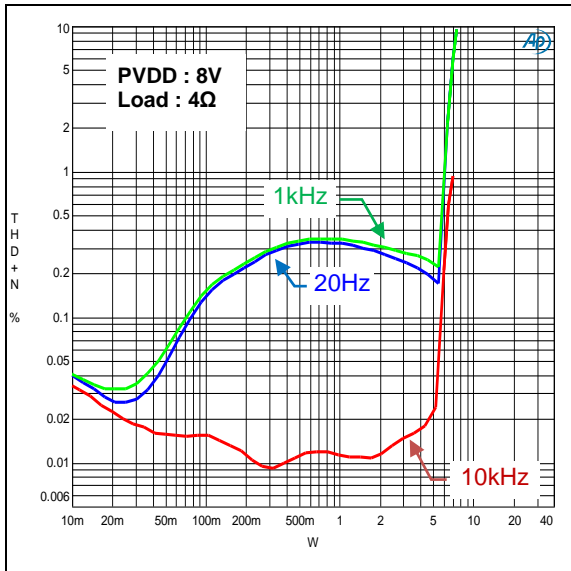


THD+N vs. Power

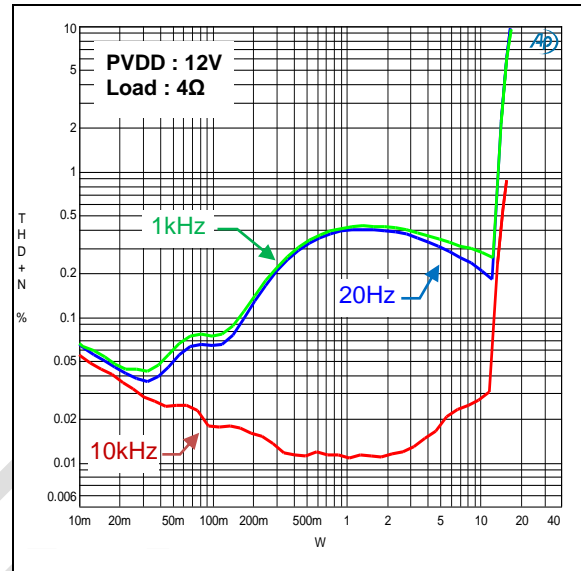


Total Harmonic Distortion + Noise vs. Power, BTL D-BTL Mode Configuration, 4Ω

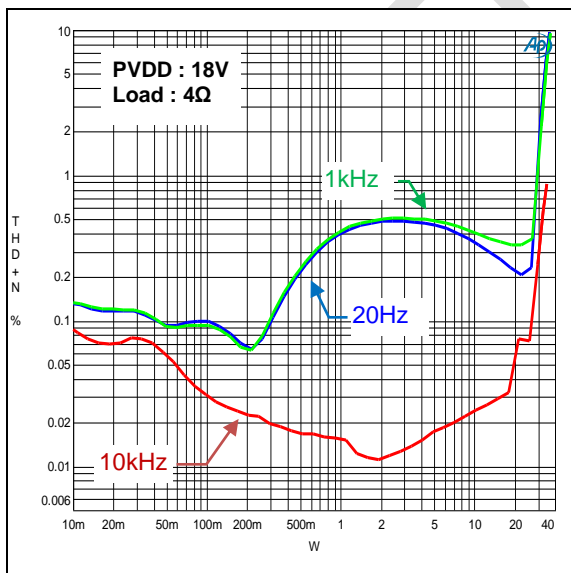
THD+N vs. Power



THD+N vs. Power

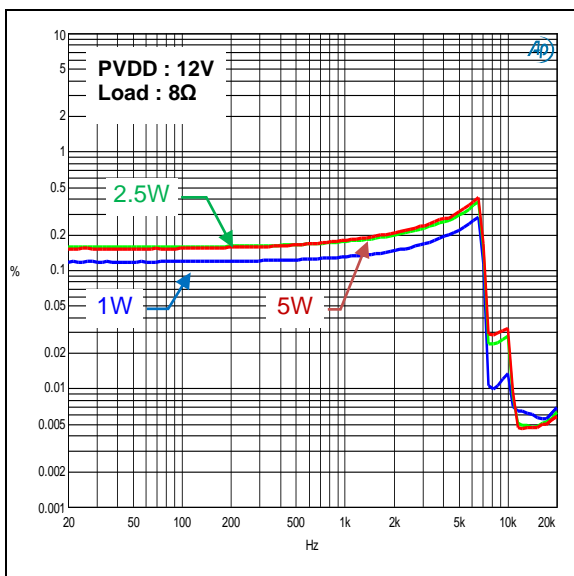


THD+N vs. Power

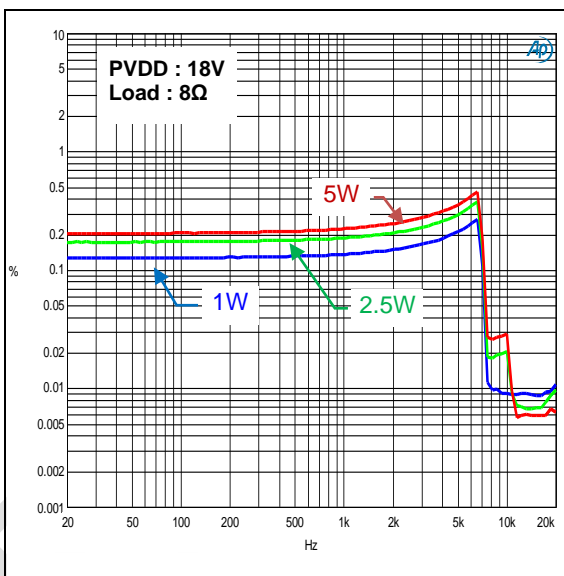


Total Harmonic Distortion + Noise vs. Frequency, BTL D-BTL Mode Configuration, 8Ω

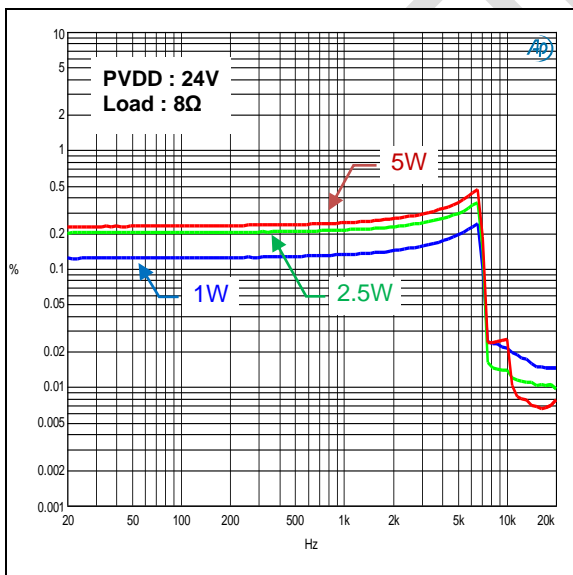
THD+N vs. Frequency



THD+N vs. Frequency

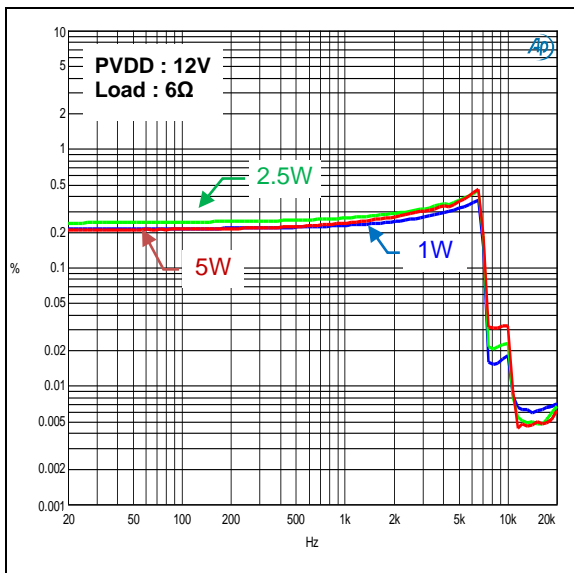


THD+N vs. Frequency

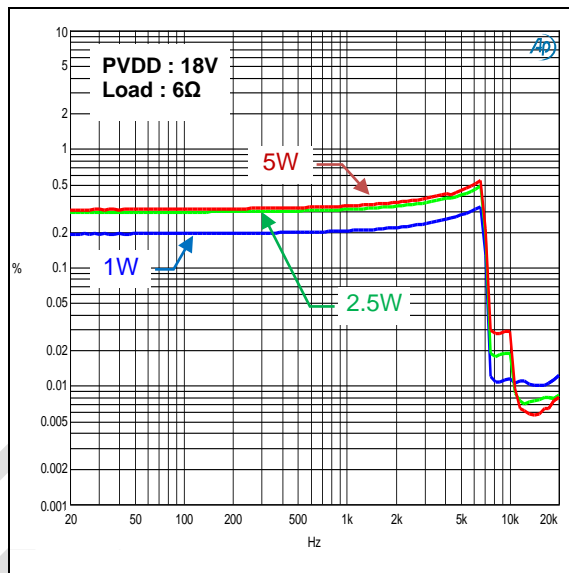


Total Harmonic Distortion + Noise vs. Frequency, BTL D-BTL Mode Configuration, 6Ω

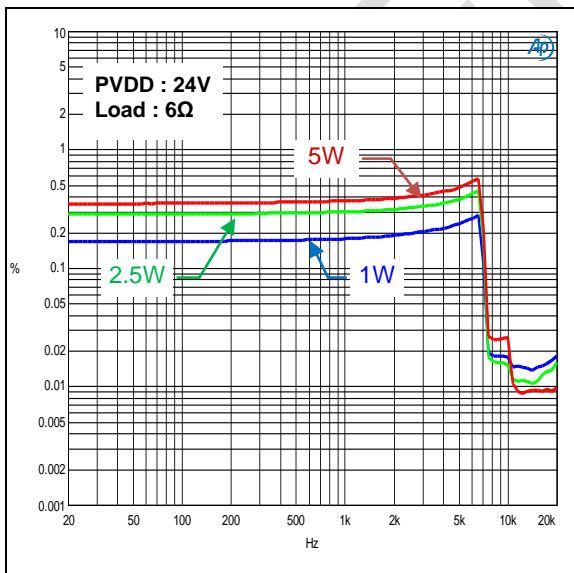
THD+N vs. Frequency



THD+N vs. Frequency

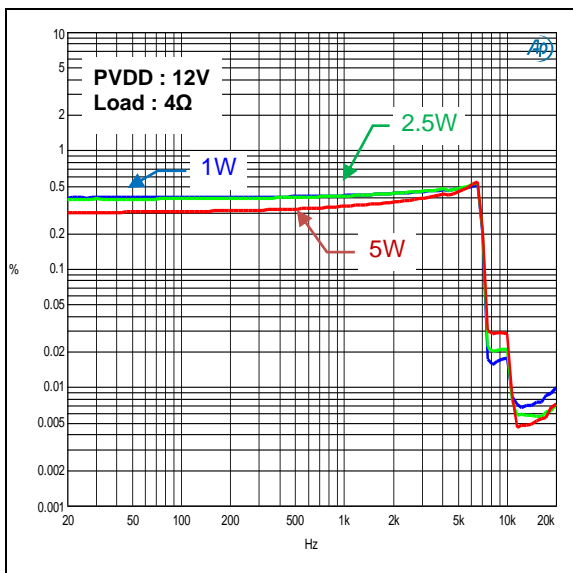


THD+N vs. Frequency

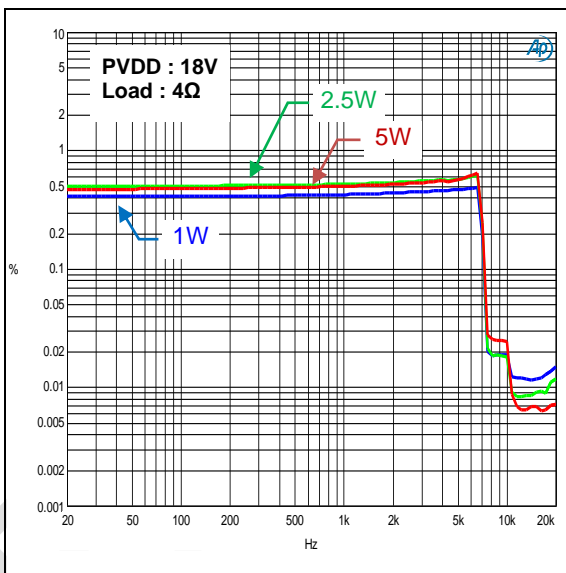


Total Harmonic Distortion + Noise vs. Frequency, BTL D-BTL Mode Configuration, 4Ω

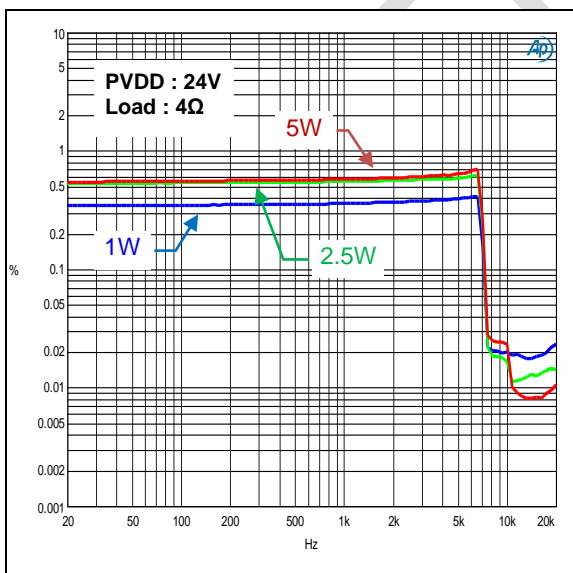
THD+N vs. Frequency



THD+N vs. Frequency



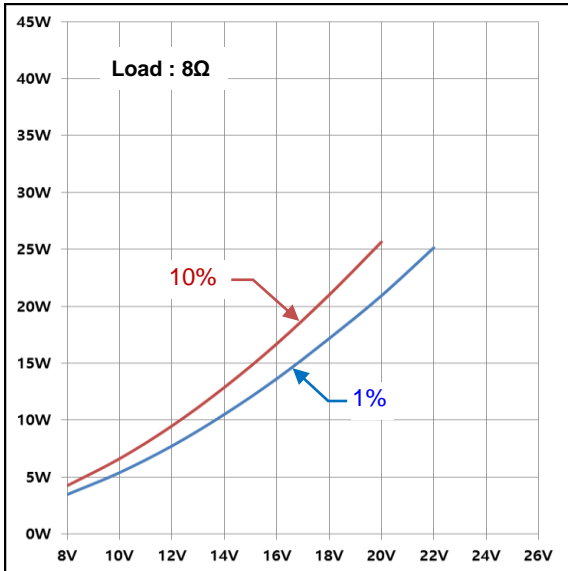
THD+N vs. Frequency



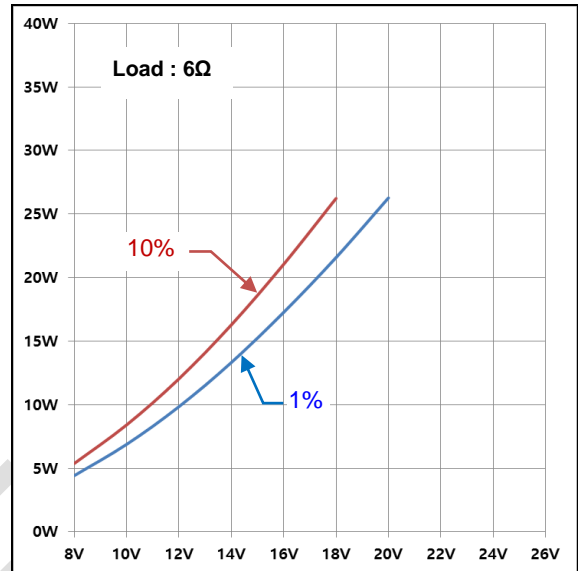


Output Power vs. PVDD, BTL D-BTL Mode Configuration

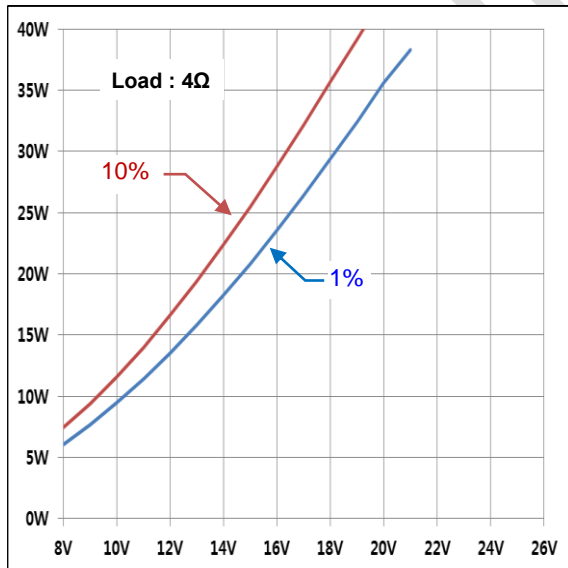
Output Power vs. PVDD



Output Power vs. PVDD

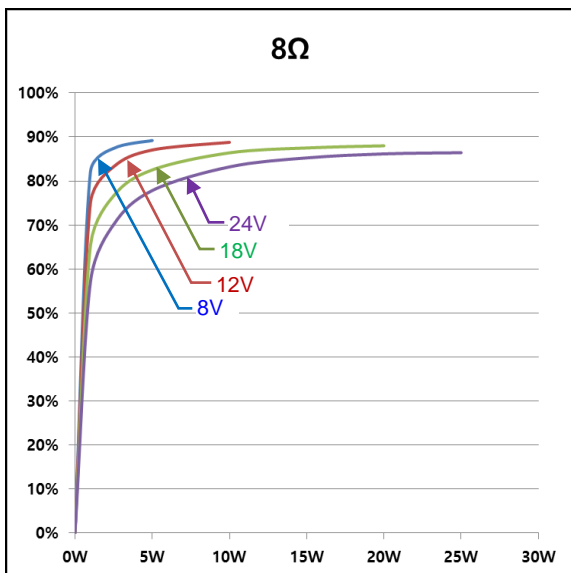


Output Power vs. PVDD

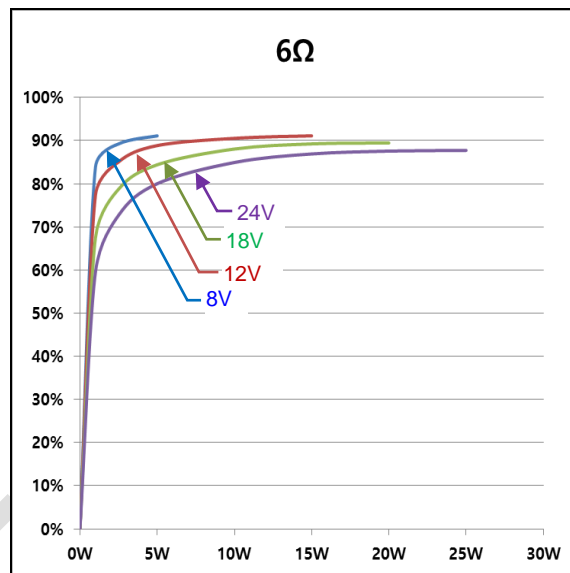


### Efficiency vs. Total Power, BTL D-BTL Mode Configuration

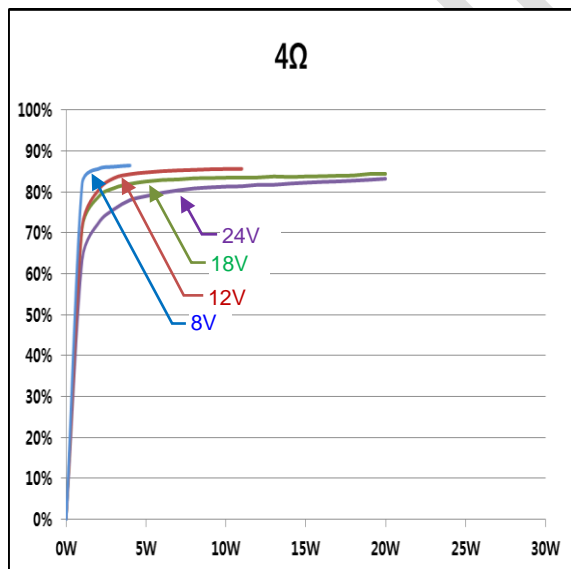
#### Efficiency vs. Output Power



#### Efficiency vs. Output Power

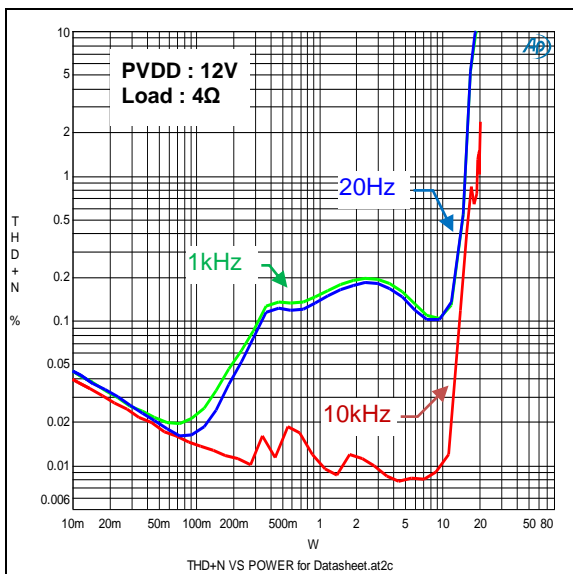


#### Efficiency vs. Output Power

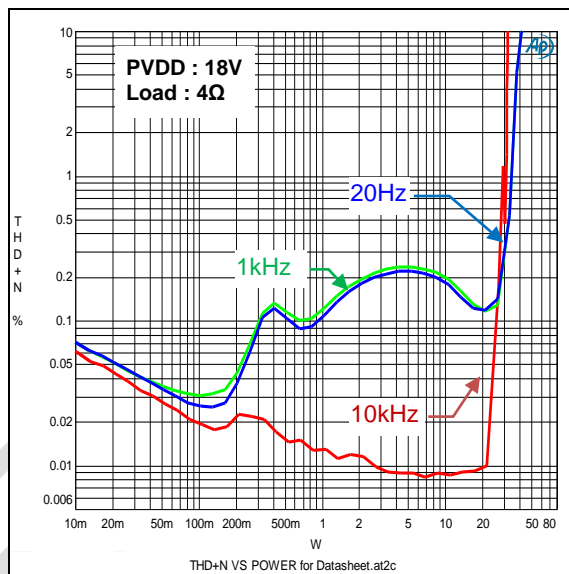


Total Harmonic Distortion + Noise vs. Power, PBTL AD Mode Configuration, 4Ω

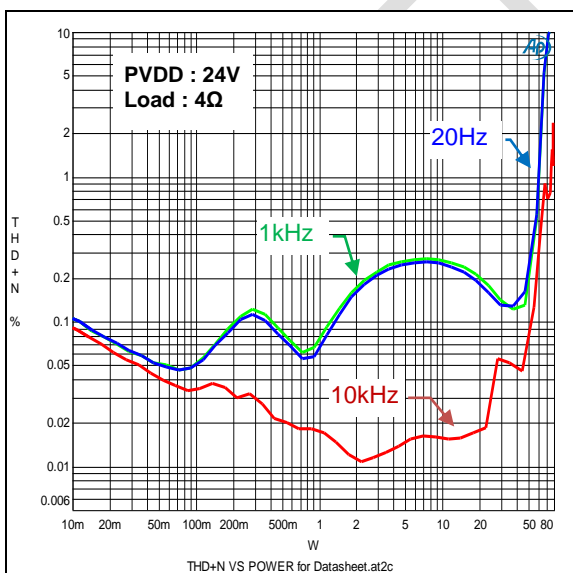
THD+N vs. Power



THD+N vs. Power

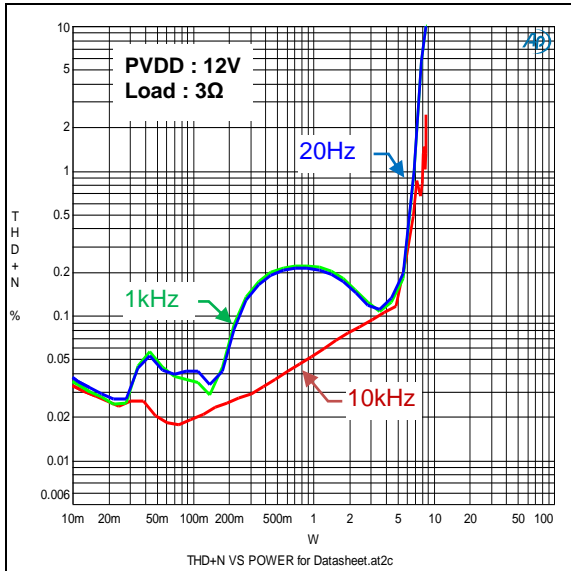


THD+N vs. Power

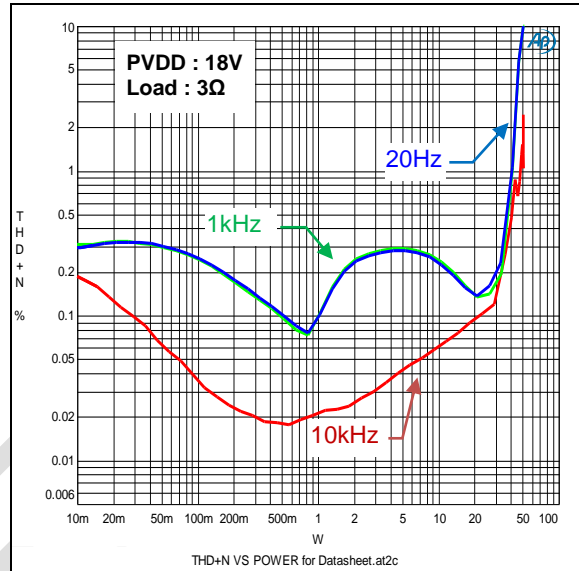


Total Harmonic Distortion + Noise vs. Power, PBTl AD Mode Configuration, 3Ω

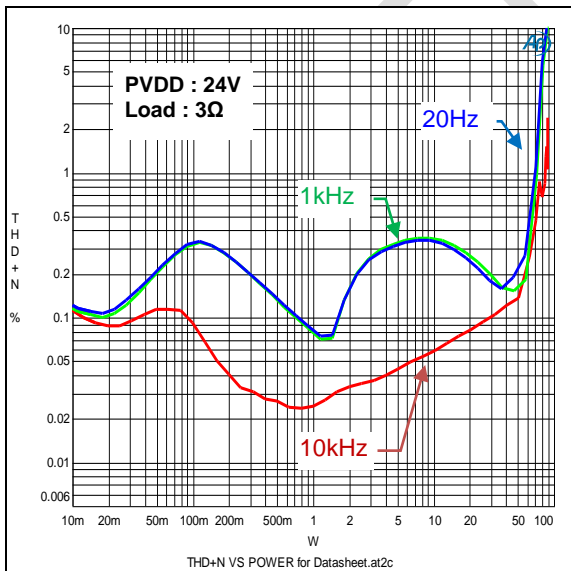
THD+N vs. Power



THD+N vs. Power

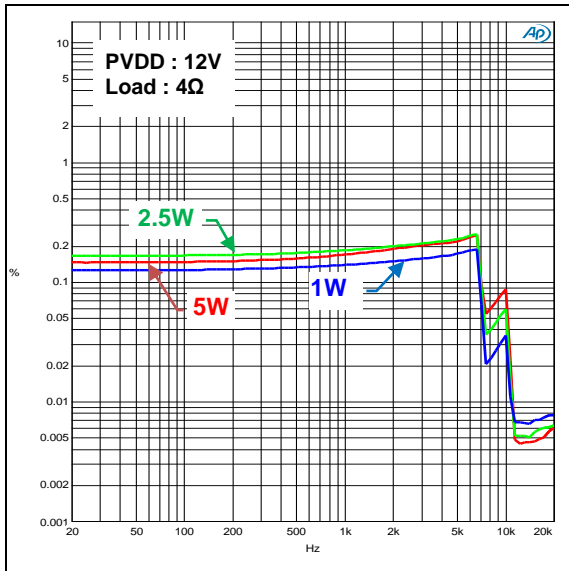


THD+N vs. Power

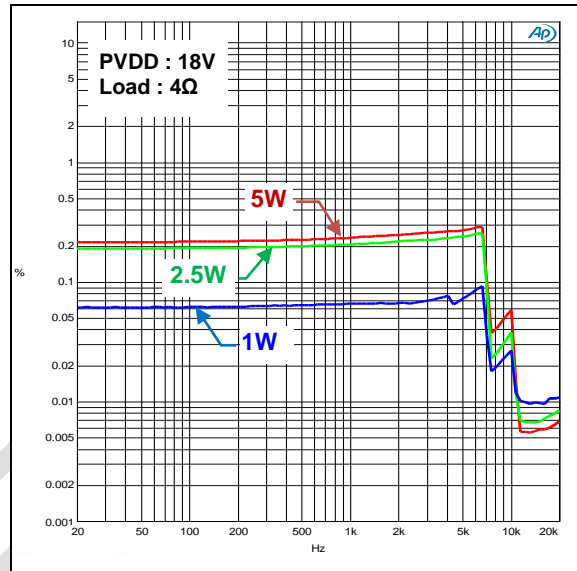


Total Harmonic Distortion + Noise vs. Frequency, PBTL AD Mode Configuration, 4Ω

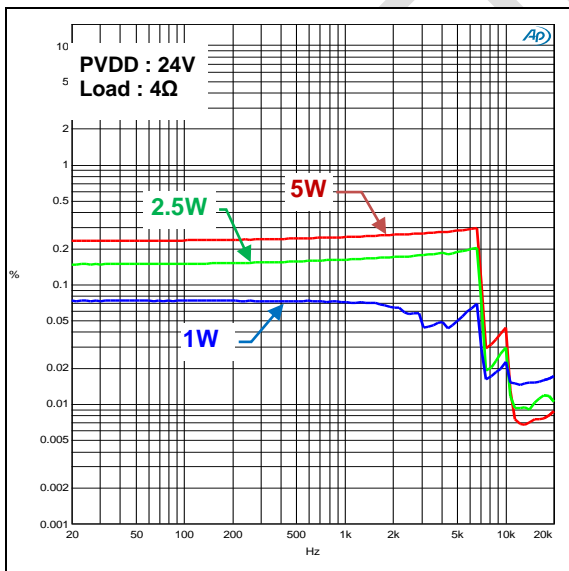
THD+N vs. Frequency



THD+N vs. Frequency

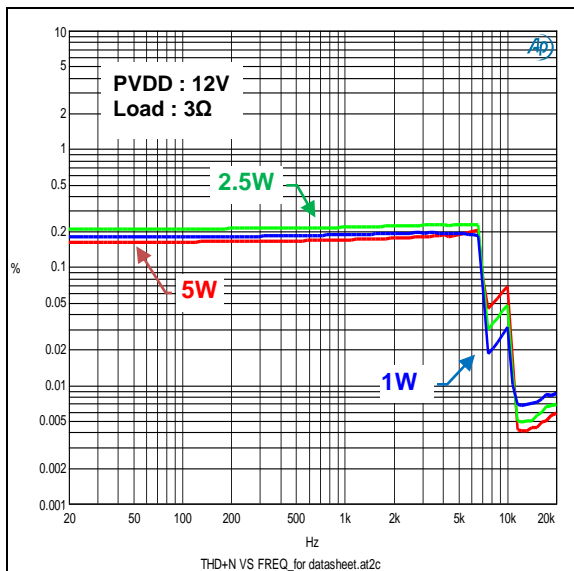


THD+N vs. Frequency

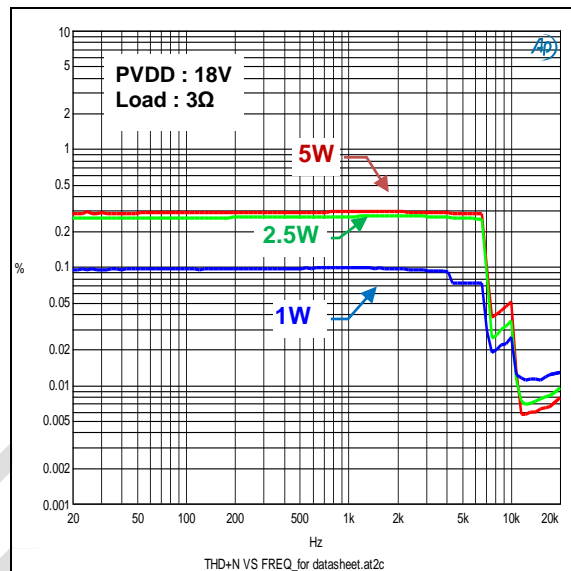


Total Harmonic Distortion + Noise vs. Frequency, PBTL AD Mode Configuration, 3Ω

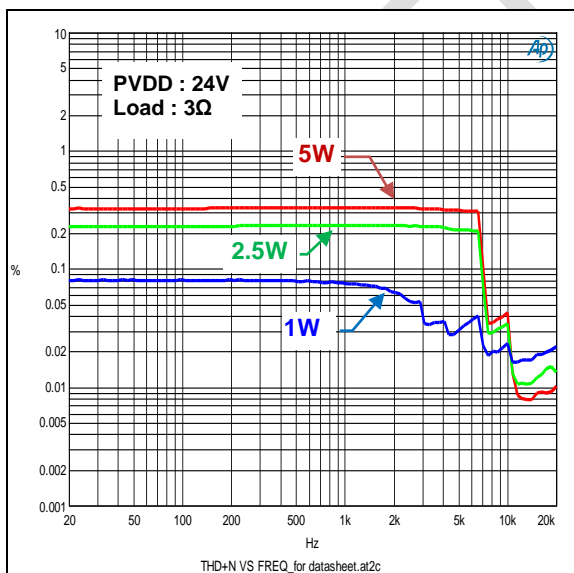
THD+N vs. Frequency



THD+N vs. Frequency

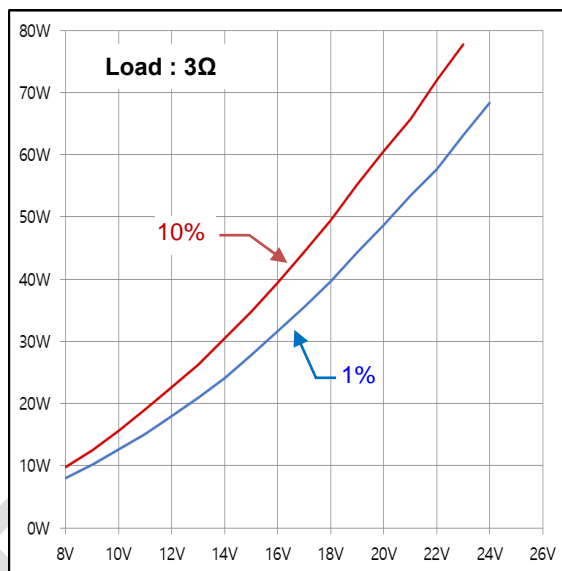
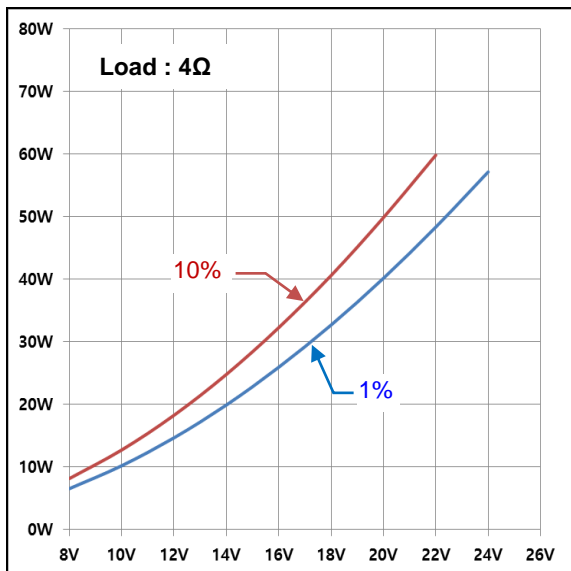


THD+N vs. Frequency



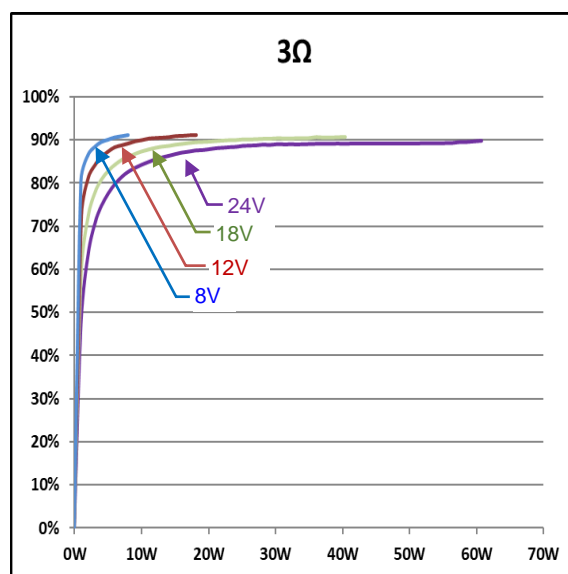
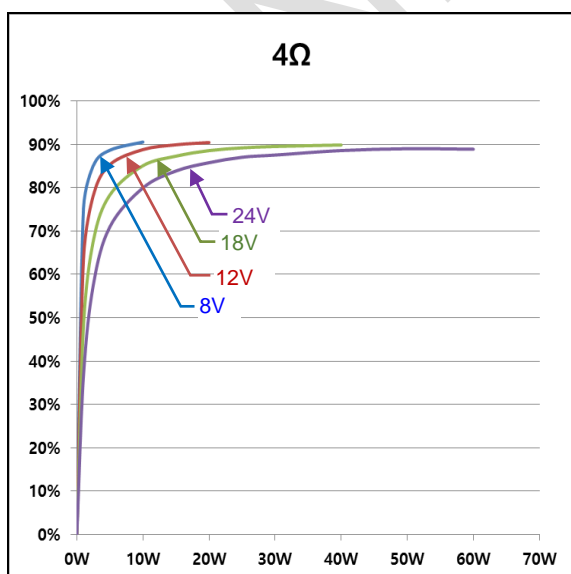
Output Power vs. PVDD, PBTL AD Mode Configuration

Output Power vs. PVDD



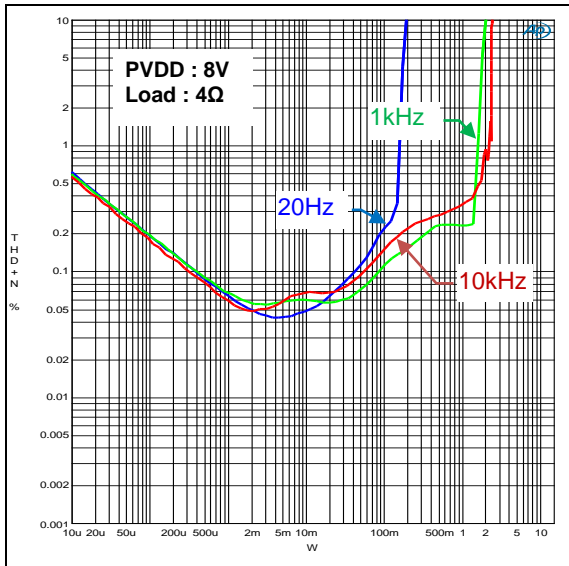
Efficiency vs. Total Power, PBTL AD Mode Configuration

Efficiency vs. Output Power

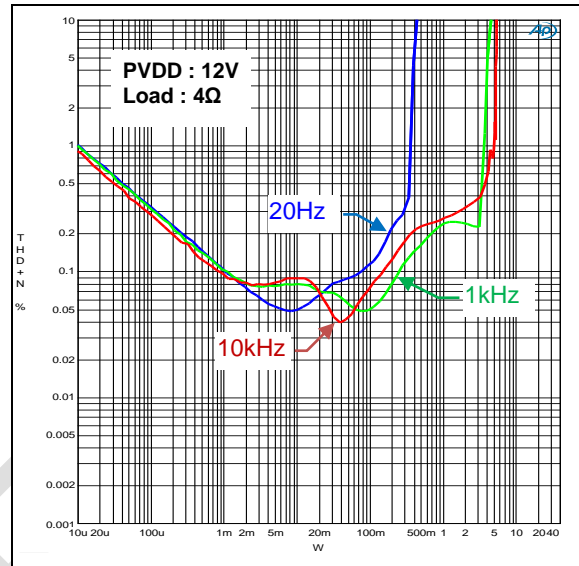


Total Harmonic Distortion + Noise vs. Power, SE AD Mode Configuration, 4Ω

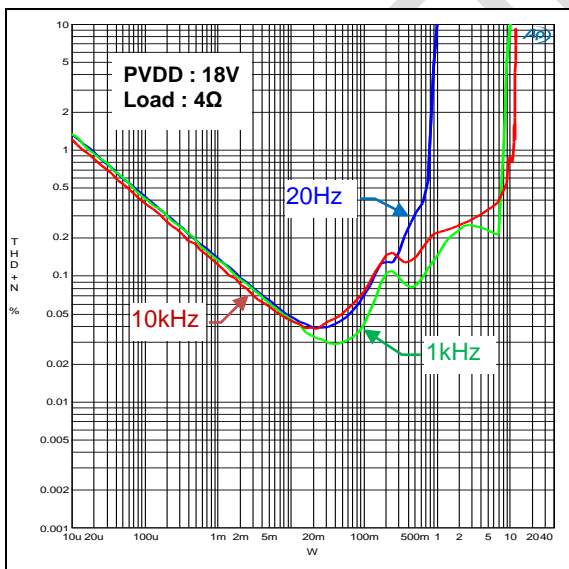
THD+N vs. Power



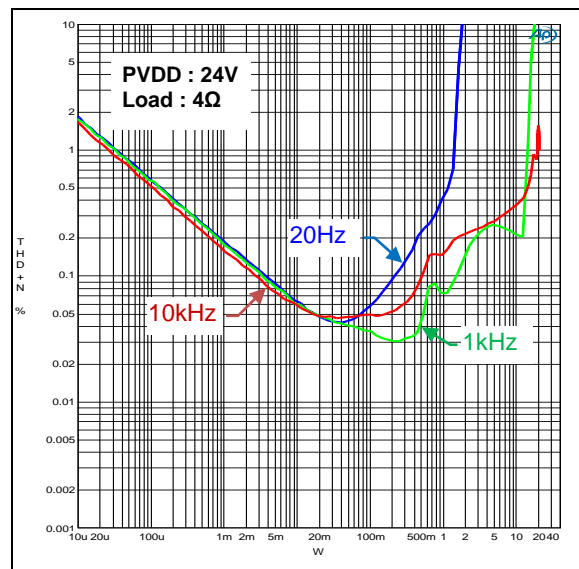
THD+N vs. Power



THD+N vs. Power



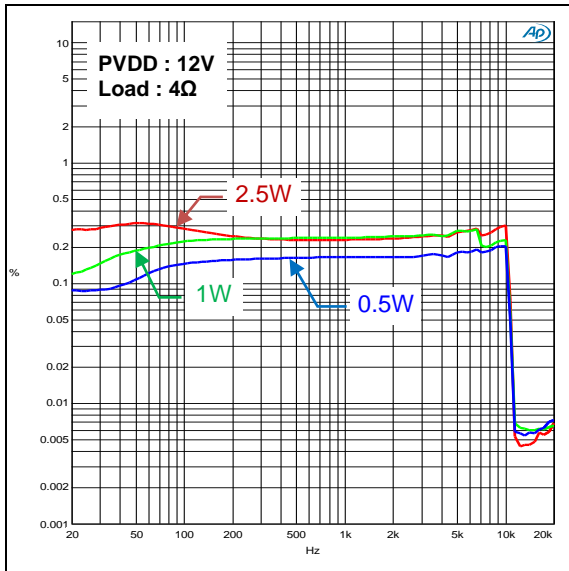
THD+N vs. Power



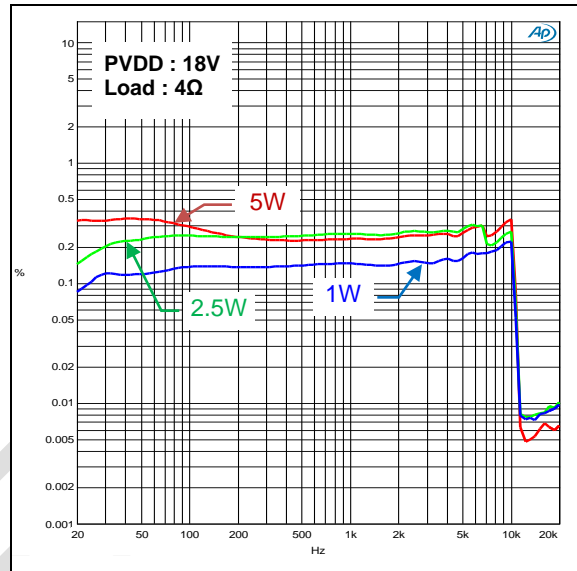


Total Harmonic Distortion + Noise vs. Frequency, SE AD Mode Configuration, 4Ω

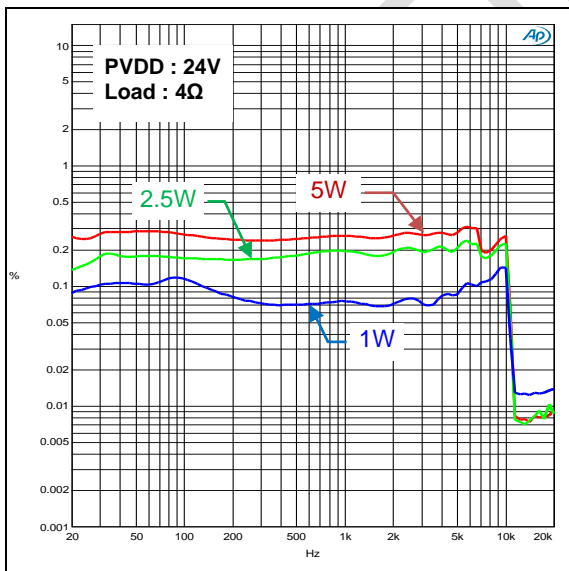
THD+N vs. Frequency



THD+N vs. Frequency

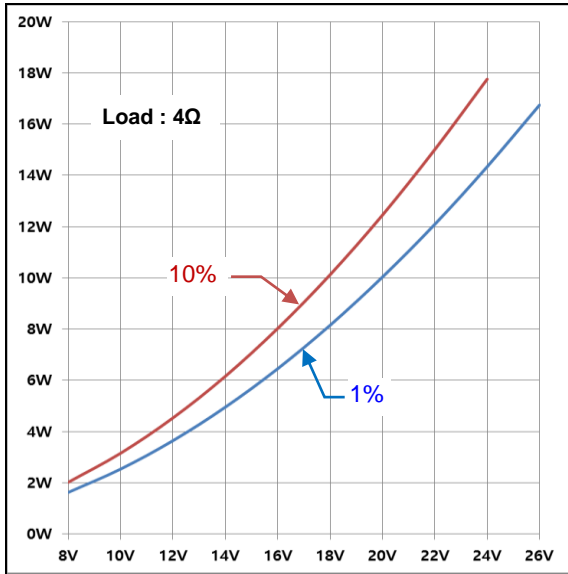


THD+N vs. Frequency



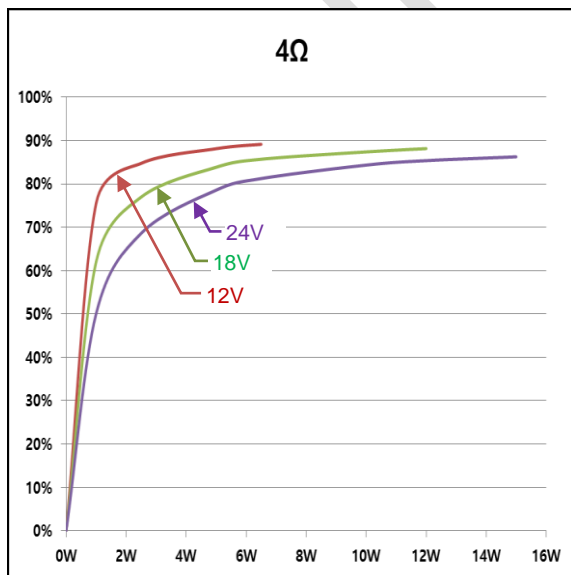
### Output Power vs. PVDD, SE AD Mode Configuration

Output Power vs. PVDD

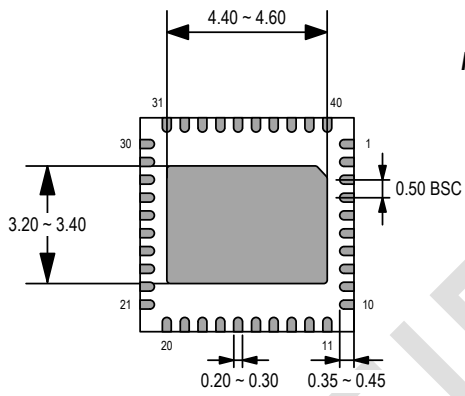
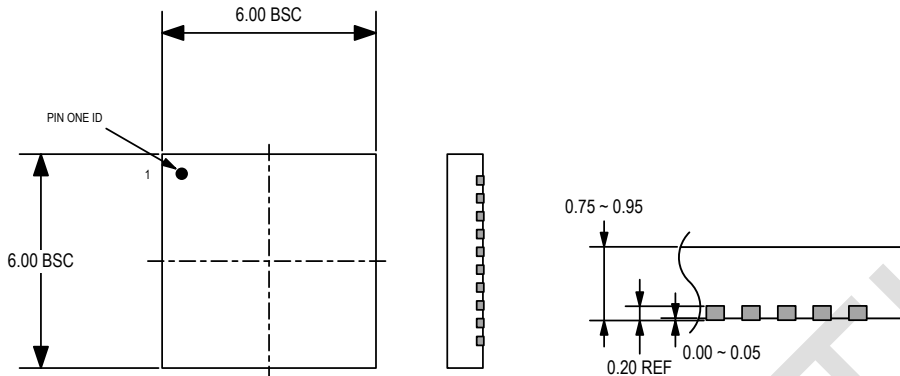


### Efficiency vs. Total Power, SE AD Mode Configuration

Efficiency vs. Output Power



**D. Outline and Mechanical Data**



**Note**

- 1. Dimensions are in millimeters
- 2. Dimensions are exclusive of mold flash and interlead flash